

WAAS CH 45538 W23A	APP CRS 229°	Rwy Idg TDZE 88 Apt Elev 90	5001
--	------------------------	---	-------------

RNAV (GPS) RWY 23

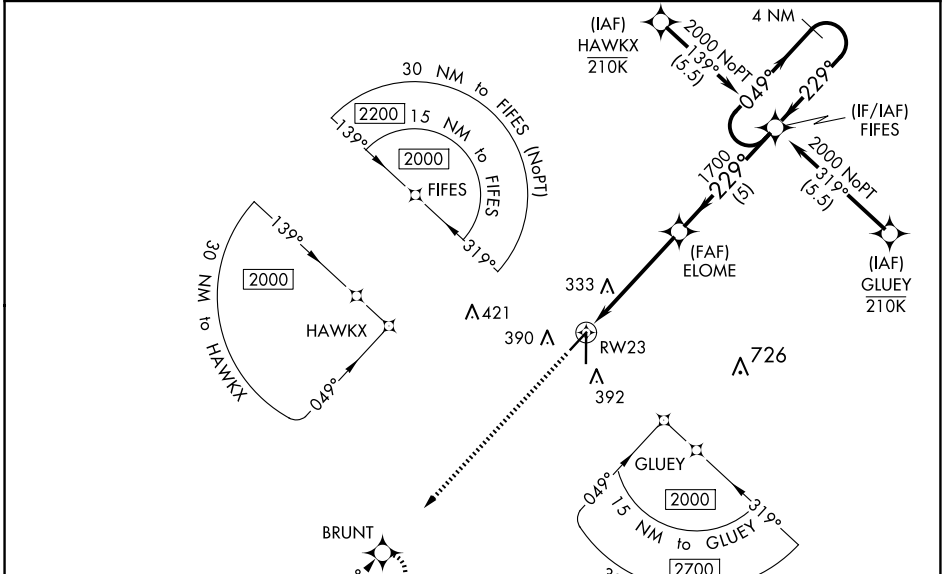
ZEPHYRHILLS MUNI (ZPH)

RNP APCH.

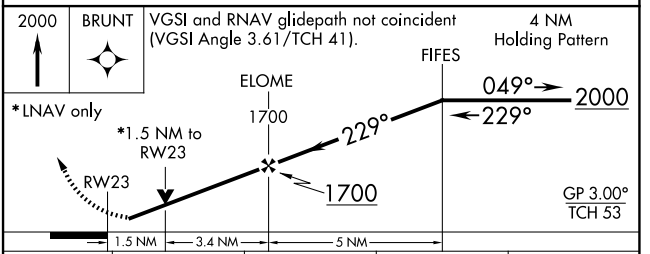
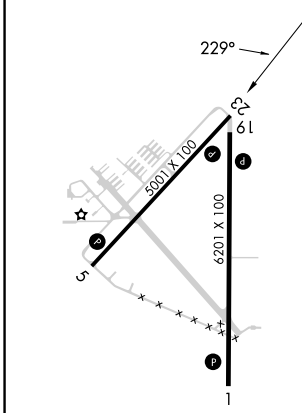
⚠ Baro-VNAV and VDP NA when using Tampa Exec altimeter setting. For uncompensated Baro-VNAV systems, LNAV/VNAV NA below -15°C or above 54°C. Rwy 23 helicopter visibility reduction below ¾ SM NA. When local altimeter setting not received, use Tampa Exec altimeter setting and increase all DA 48 feet and all MDA 60 feet. Increase LPV and LNAV/VNAV all Cats, LNAV and Circling Cat C/D visibility ¼ mile.

MISSED APPROACH:
Climb to 2000 direct BRUNT and hold.

AWOS-3PT 118.975	TAMPA APP CON 119.9 290.3	UNICOM 123.075 (CTAF) 📻
----------------------------	-------------------------------------	--



ELEV 90	TDZE 88
----------------	----------------



CATEGORY	A	B	C	D
LPV DA		377-1	289 (300-1)	
LNAV/VNAV DA		409-1	321 (400-1)	
LNAV MDA	600-1	512 (600-1)	600-1 3/8	512 (600-1 3/8)
C CIRCLING	740-1	650 (700-1)	740-1 3/4 650 (700-1 3/4)	740-2 650 (700-2)

MIRL Rwy 5-23 **📻**
 HIRL Rwy 1-19 **📻**
 REIL Rws 1 and 19 **📻**

SE-3, 20 FEB 2025 to 20 MAR 2025

SE-3, 20 FEB 2025 to 20 MAR 2025