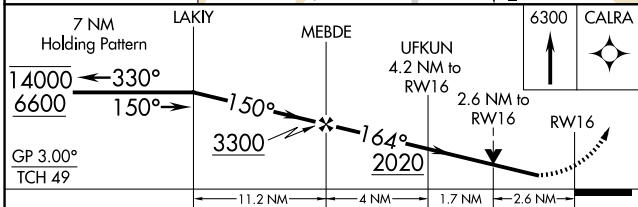
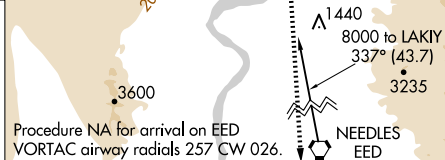
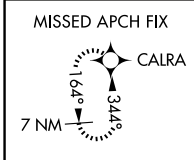


WAAS CH <b>82624</b> <b>W16A</b>	APP CRS <b>164°</b>	Rwy Idg TDZE Apt Elev	<b>8500</b> <b>646</b> <b>707</b>
--	------------------------	-----------------------------	---

# RNAV (GPS) RWY 16

LAUGHLIN/BULLHEAD INTL (IFP)

RNP APCH - GPS.		MISSED APPROACH: Climb to 6300 direct CALRA and hold, continue climb-in-hold to 6300.	
ATIS <b>119.825</b>	LOS ANGELES CENTER <b>134.65 360.65</b>	BULLHEAD TOWER★ <b>123.9 (CTAF)</b>	GND CON <b>118.25</b>



ELEV 707	D	TDZE 646
----------	---	----------

REIL Rwy 16 and 34  
MIRL Rwy 16-34

CATEGORY	A	B	C	D
LPV DA		1048-1 $\frac{1}{8}$	402 (400-1 $\frac{1}{8}$ )	
LNAV/VNAV DA		1500-2 $\frac{1}{2}$	854 (800-2 $\frac{1}{2}$ )	
LNAV MDA	1500-1 854 (800-1)	1500-1 $\frac{1}{4}$ 854 (800-1 $\frac{1}{4}$ )	1500-2 $\frac{1}{2}$	854 (800-2 $\frac{1}{2}$ )
CIRCLING	1500-1 793 (800-1)	1560-1 $\frac{1}{4}$ 853 (900-1 $\frac{1}{4}$ )	1800-3 1093 (1100-3)	2340-3 1633 (1700-3)

SW-4, 20 FEB 2025 to 20 MAR 2025

SW-4, 20 FEB 2025 to 20 MAR 2025