

(COOLI6.COOLI) 19227

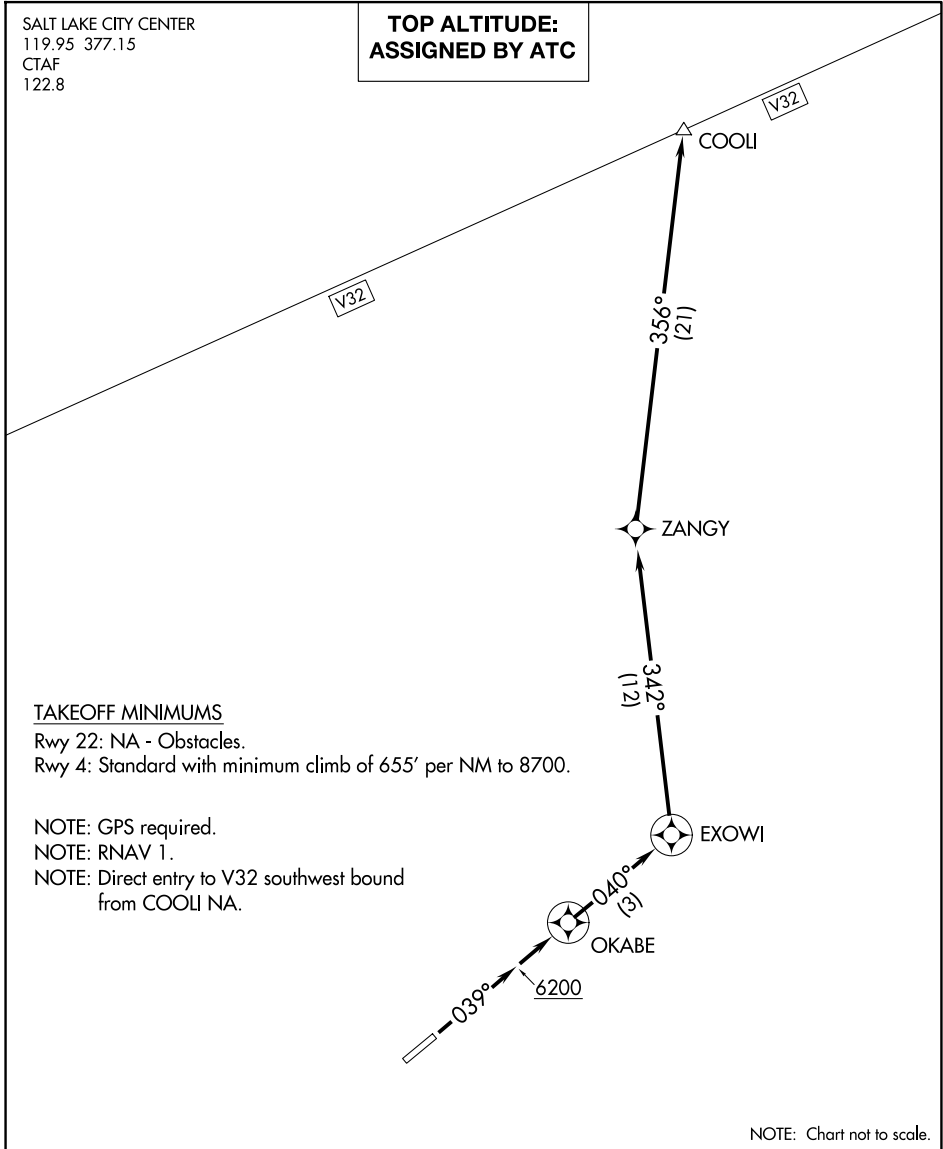
# COOLI SIX DEPARTURE (RNAV)

AL-6969 (FAA)

HEBER VALLEY (HCR)  
HEBER, UTAH

SALT LAKE CITY CENTER  
119.95 377.15  
CTAF  
122.8

**TOP ALTITUDE:  
ASSIGNED BY ATC**



### TAKEOFF MINIMUMS

Rwy 22: NA - Obstacles.

Rwy 4: Standard with minimum climb of 655' per NM to 8700.

NOTE: GPS required.

NOTE: RNAV 1.

NOTE: Direct entry to V32 southwest bound from COOLI NA.

NOTE: Chart not to scale.



### DEPARTURE ROUTE DESCRIPTION

TAKEOFF RUNWAY 4: Climb heading 039° to 6200, then climb to 12000 (or maintain ATC assigned altitude) direct OKABE and on track 040° to EXOWI, then on depicted route to COOLI.

# COOLI SIX DEPARTURE (RNAV)

(COOLI6.COOLI) 15AUG19

HEBER, UTAH  
HEBER VALLEY (HCR)

SW-4, 20 FEB 2025 to 20 MAR 2025

SW-4, 20 FEB 2025 to 20 MAR 2025