

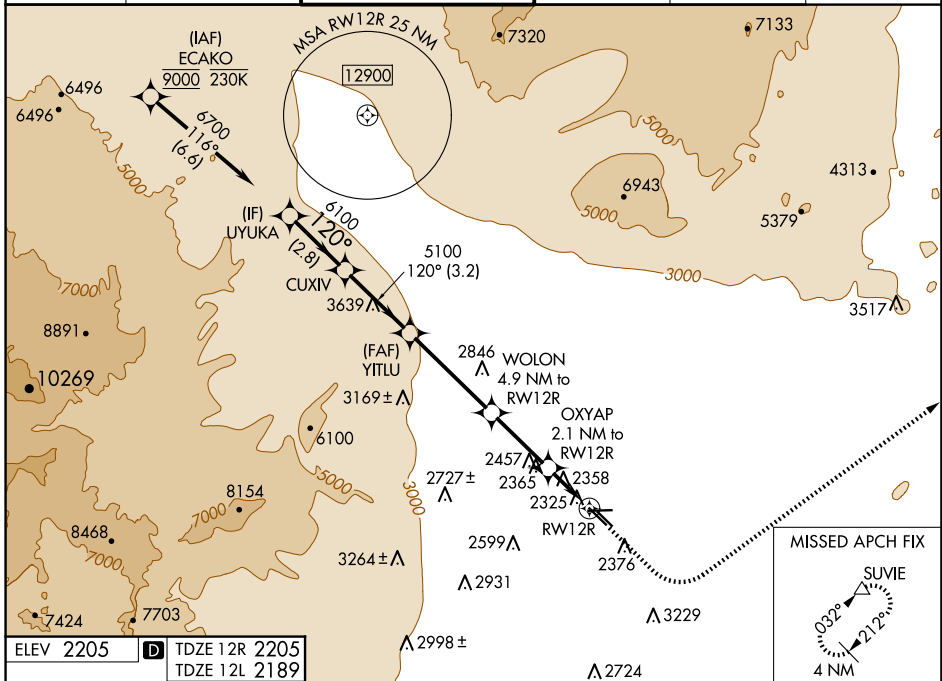
WAAS CH 69443	APP CRS 120°	Rwy Idg 12R	5000	4199
W12A		TDZE 2205	2205	2189
		Apt Elev 2205	2205	2205

RNAV (GPS) RWY 12R

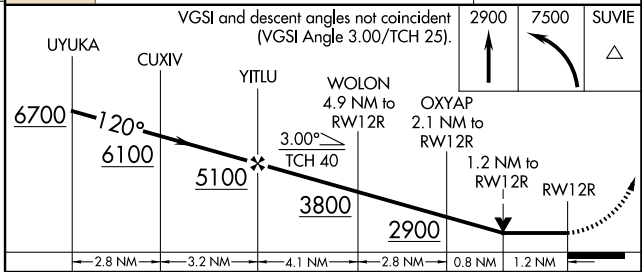
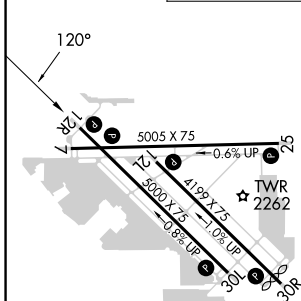
NORTH LAS VEGAS (VGT)

RNP APCH - GPS.		MISSED APPROACH: Climb to 2900 then climbing left turn to 7500 direct SUVIE and hold, continue climb-in-hold to 7500.			
Rwy 12R helicopter visibility reduction below 3/4 SM NA.					

ATIS 118.05	LAS VEGAS APP CON 119.4 360.85	NORTH LAS VEGAS TOWER* 125.7 (CTAF) 360.75	GND CON 121.7	CLNC DEL 124.0	UNICOM 122.95
--------------------	---------------------------------------	---	----------------------	-----------------------	----------------------



ELEV 2205		TDZE 12R 2205	TDZE 12L 2189
------------------	--	----------------------	----------------------



	A	B	C	D
LP MDA	2620-1	415 (500-1)	2620-1 1/8	415 (500-1 1/8)
LNAV MDA	2820-1	615 (700-1)	2820-1 3/4	615 (700-1 3/4)
SIDESTEP 12L	2820-1	631 (700-1)	2820-1 3/4 631 (700-1 3/4)	2820-2 631 (700-2)
CIRCLING	2820-1	615 (700-1)	2840-1 3/4 635 (700-1 3/4)	3540-3 1335 (1400-3)