

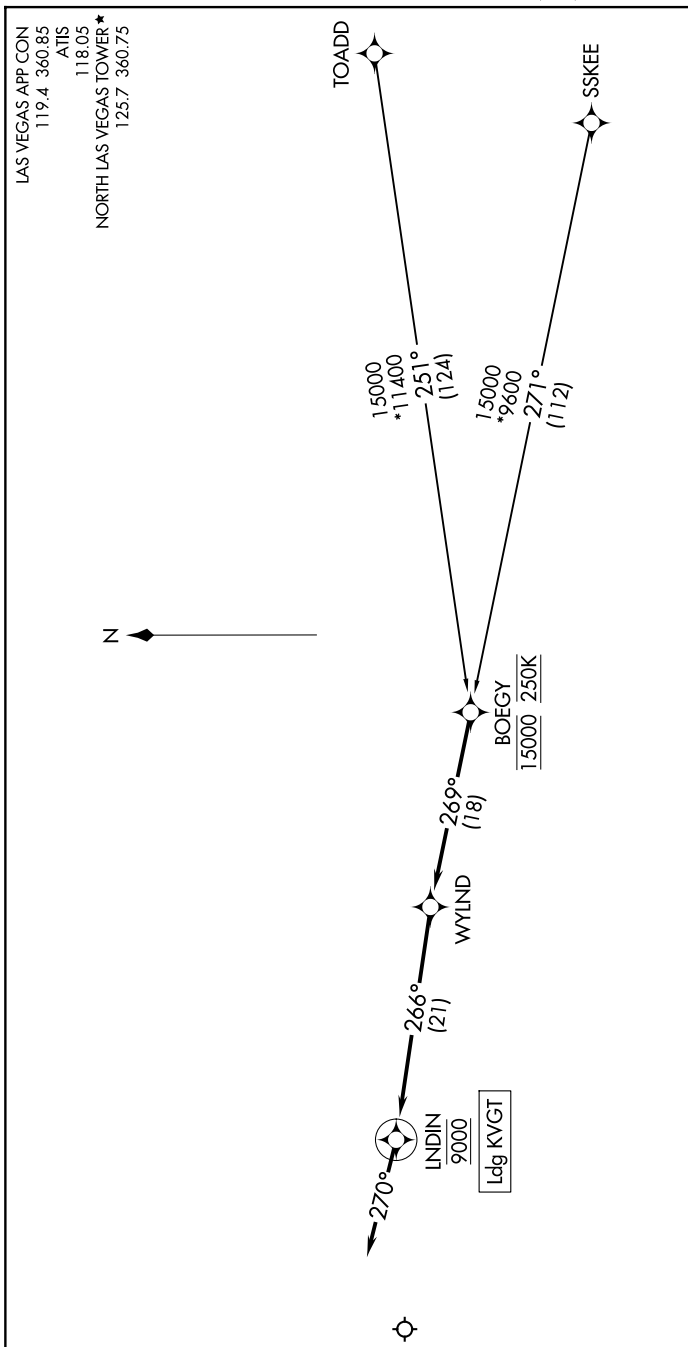
(BOEGY.WYLND1) 21056

# WYLND ONE ARRIVAL (RNAV)

AL-6970 (FAA)

NORTH LAS VEGAS (VGT)  
LAS VEGAS, NEVADA

SW-4, 20 FEB 2025 to 20 MAR 2025



LAS VEGAS APP CON  
119.4 360.85  
ATIS  
118.05  
NORTH LAS VEGAS TOWER \*  
125.7 360.75

## ARRIVAL ROUTE DESCRIPTION

SSKEE TRANSITION (SSKEE.WYLND1)  
TOADD TRANSITION (TOADD.WYLND1)

From BOEGY on track 269° to WYLND, then on track 266° to cross LNDIN at 9000, then on track 270°. Expect RADAR vectors to final approach course.

NOTE: RADAR required.  
NOTE: RNAV 1.  
NOTE: DME/DME/IRU or GPS required.  
NOTE: For non-GPS equipped aircraft, BLD, DRK, EED, FLG, GCN, IGM, PGA, PGS, and TBC DMEs must be operational.

NOTE: Chart not to scale.

SW-4, 20 FEB 2025 to 20 MAR 2025

# WYLND ONE ARRIVAL (RNAV)

(BOEGY.WYLND1) 25FEB21

LAS VEGAS, NEVADA  
NORTH LAS VEGAS (VGT)