

HUGO, OKLAHOMA

AL-6979 (FAA)

19115

WAAS CH 86639 W35A	APP CRS 358°	Rwy Idg TDZE Apt Elev	4007 572 572
---------------------------------	------------------------	-----------------------------	---

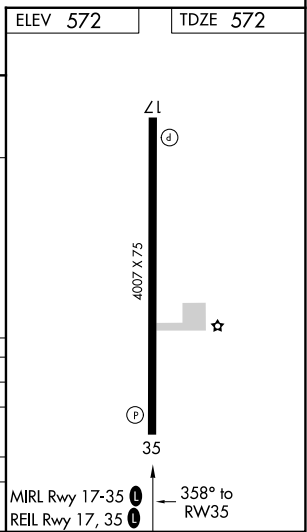
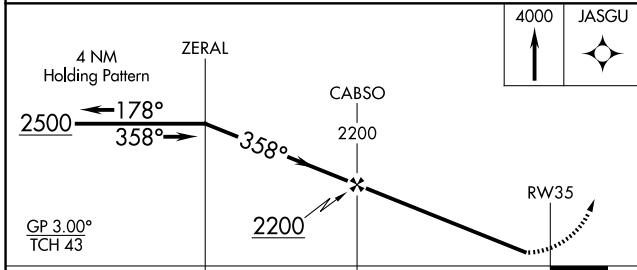
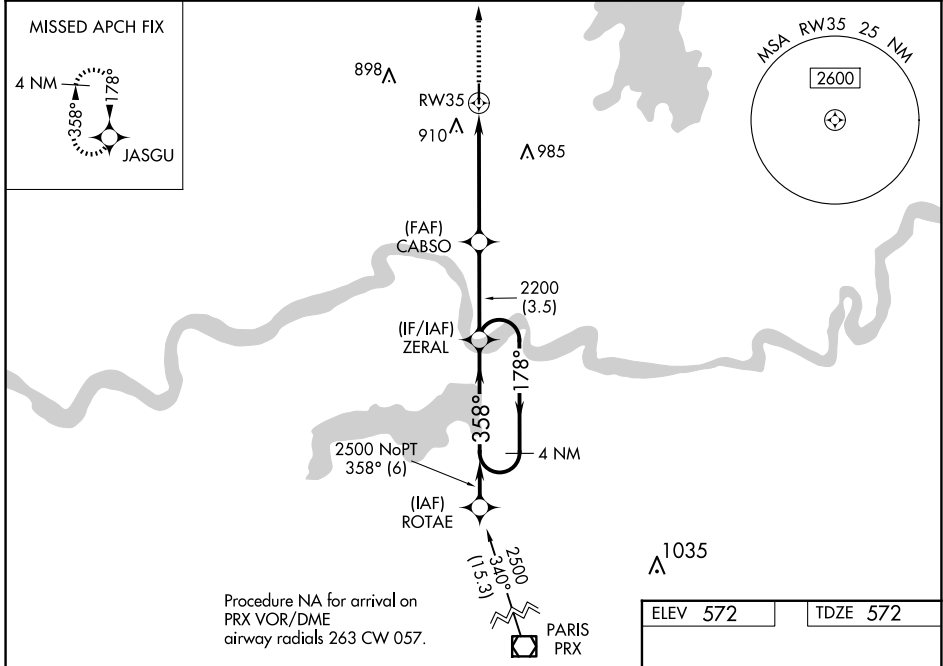
RNAV (GPS) RWY 35

STAN STAMPER MUNI (HHW)

For uncompensated Baro-VNAV systems, LNAV/VNAV NA below -16°C (4°F) or above 54°C (130°F). Rwy 35 helicopter visibility reduction below 1 SM NA. DME/DME RNP-0.3 NA. Straight-in Rwy 35 and Circling Rwy 35 NA at night.

MISSED APPROACH: Climb to 4000 direct JASGU and hold, continue climb-in-hold to 4000.

AWOS-3 119.025	FORT WORTH CENTER 127.6 307.2	UNICOM 122.8 (CTAF) 0
--------------------------	---	---------------------------------



CATEGORY	A	B	C	D
LPV DA		822-1	250 (300-1)	
LNAV/VNAV DA		1071-1 $\frac{3}{8}$	499 (500-1 $\frac{3}{8}$)	
LNAV MDA	1020-1	448 (500-1)	1020-1 $\frac{3}{8}$	448 (500-1 $\frac{3}{8}$)
C CIRCLING	1220-1	648 (700-1)	1340-2 $\frac{1}{4}$ 768 (800-2 $\frac{1}{4}$)	1340-2 $\frac{1}{2}$ 768 (800-2 $\frac{1}{2}$)

MIRL Rwy 17-35 0 REL Rwy 17, 35 0 358° to RWY 35

HUGO, OKLAHOMA
Amdt 1 29MAR18

34°02'N-95°33'W

STAN STAMPER MUNI (HHW) RNAV (GPS) RWY 35

SC-1, 20 FEB 2025 to 20 MAR 2025

SC-1, 20 FEB 2025 to 20 MAR 2025