


WAAS CH <b>58244</b> <b>W36A</b>	APP CRS <b>360°</b>	Rwy Idg TDZE Apt Elev	<b>6001</b> <b>1301</b> <b>1316</b>
--	------------------------	-----------------------------	---

# RNAV (GPS) RWY 36

MONETT RGNL (HFJ)

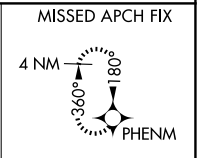
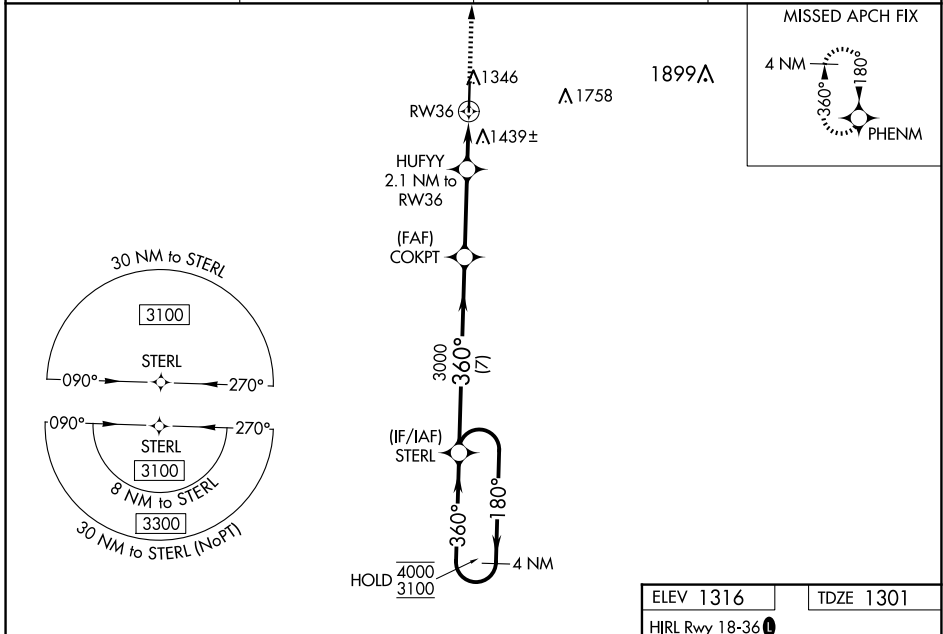
RNP APCH - GPS.

**⚠** Baro-VNAV and VDP NA when using Joplin altimeter setting. For uncompensated Baro-VNAV systems, LNAV/VNAV NA below -17°C or above 54°C. When local altimeter setting not received, use Joplin altimeter setting: increase LPV DA to 1613 feet; increase LNAV/VNAV DA to 1862 feet and all visibilities  $\frac{3}{8}$  SM; increase all MDAs 120 feet and LNAV visibility Cats C and D  $\frac{3}{8}$  SM, and Circling visibility Cat C/D  $\frac{1}{2}$  SM.

MALSRL 

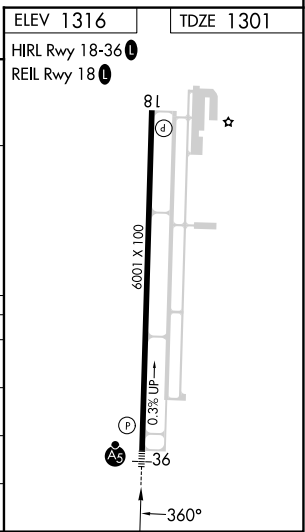
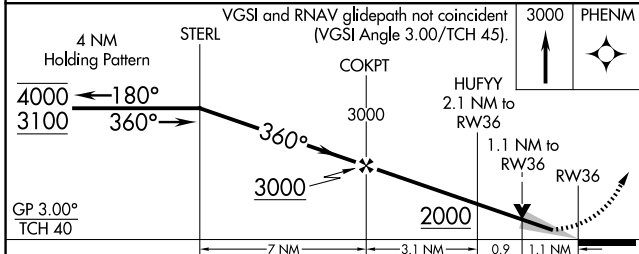
MISSED APPROACH: Climb to 3000 direct PHENM and hold.


AWOS-3 <b>118.275</b>	SPRINGFIELD APP CON <b>124.95 318.2</b>	CLNC DEL <b>121.85</b>	UNICOM <b>123.075</b> (CTAF) 
--------------------------	--	---------------------------	---



NC-3, 20 FEB 2025 to 20 MAR 2025

NC-3, 20 FEB 2025 to 20 MAR 2025



CATEGORY	A	B	C	D
LPV DA		1501- $\frac{1}{2}$	200 (200- $\frac{1}{2}$ )	
LNAV/VNAV DA		1750- $\frac{7}{8}$	449 (500- $\frac{7}{8}$ )	
LNAV MDA	1700- $\frac{1}{2}$	399 (400- $\frac{1}{2}$ )	1700- $\frac{5}{8}$	399 (400- $\frac{5}{8}$ )
 CIRCLING	1760-1 444 (500-1)	1900-1 584 (600-1)	1900-1 $\frac{1}{2}$ 584 (600-1 $\frac{1}{2}$ )	2060-2 $\frac{1}{2}$ 744 (800-2 $\frac{1}{2}$ )