

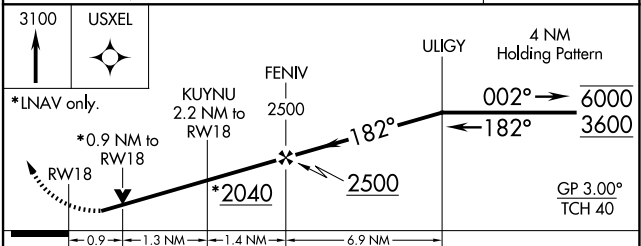
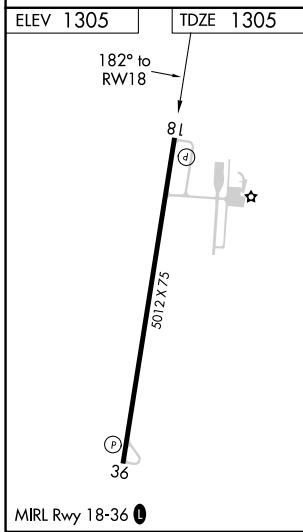
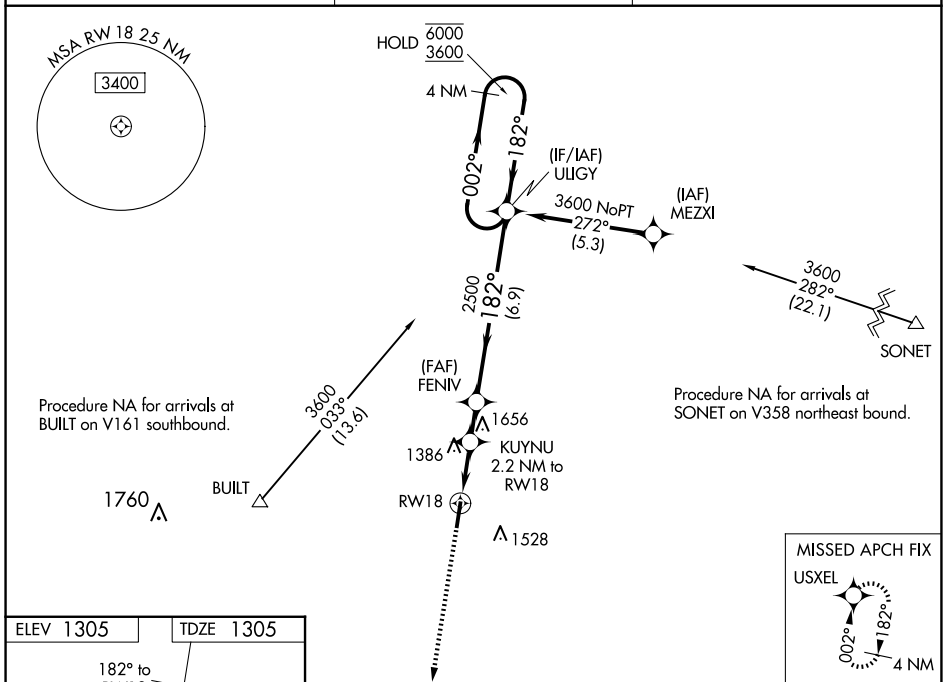
WAAS CH 72629 W18A	APP CRS 182°	Rwy Idg TDZE 1305 Apt Elev 1305	5012
--	------------------------	---	-------------

RNAV (GPS) RWY 18

HAMILTON MUNI (MNZ)

RNP APCH-GPS. ▼ Rwy 18 helicopter visibility reduction below ¼ SM NA. For uncompensated Baro-VNAV systems, LNAV/VNAV NA below -17°C or above 54°C.	MISSED APPROACH: Climb to 3100 direct USXEL and hold.
--	---

AWOS-3PT 118.525	GRAY APP CON 120.075 323.15	UNICOM 122.7 (CTAF) 0
----------------------------	---------------------------------------	---------------------------------



CATEGORY	A	B	C	D
LPV DA		1555-1	250 (300-1)	NA
LNAV/VNAV DA		1555-1	250 (300-1)	NA
LNAV MDA		1640-1	335 (400-1)	NA
CIRCLING	1680-1 375 (400-1)	1840-1 535 (600-1)	1960-1¾ 655 (700-1¾)	NA

SC-3, 20 FEB 2025 to 20 MAR 2025

SC-3, 20 FEB 2025 to 20 MAR 2025