

APP CRS 101°	Rwy Idg 3712
	TDZE 679
	Apt Elev 686

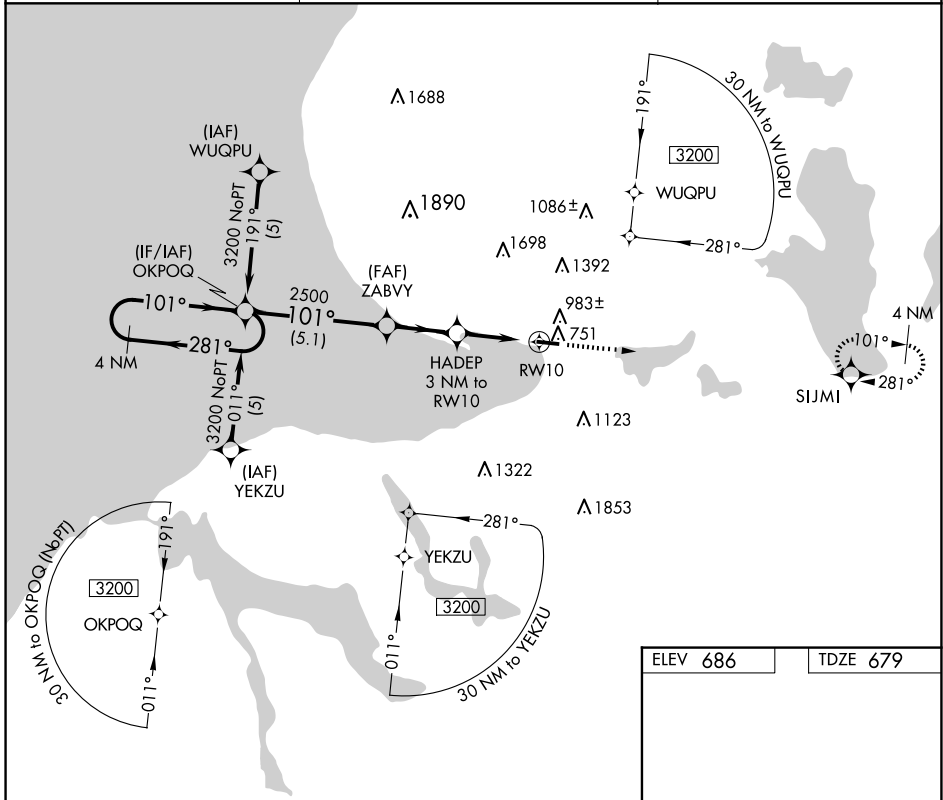
RNAV (GPS) RWY 10

HARBOR SPRINGS (MGN)

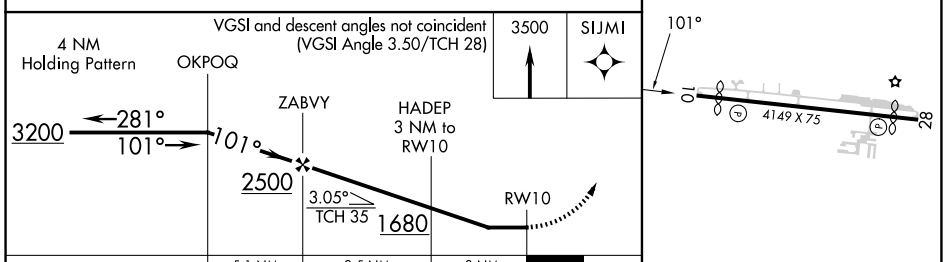
⚠ DME/DME RNP-0.3 NA. When local altimeter setting not received, use
⚠ Pellston altimeter setting and increase all MDAs 40 feet. Procedure NA
 at night. Helicopter visibility reduction below 1 SM NA.

MISSED APPROACH: Climb to 3500 direct SIJMI and hold.

AWOS-3P 119.925	MINNEAPOLIS CENTER 134.6 354.05	UNICOM 122.8 (CTAF) 0
---------------------------	---	--



EC-1, 20 FEB 2025 to 20 MAR 2025



MIRL Rwy 10-28 **0**