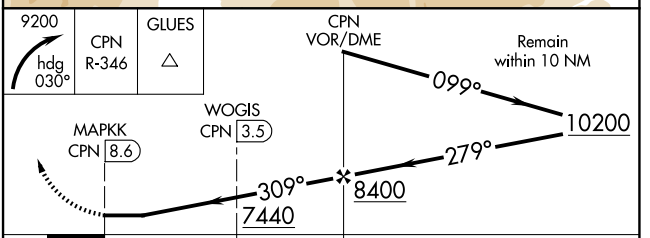
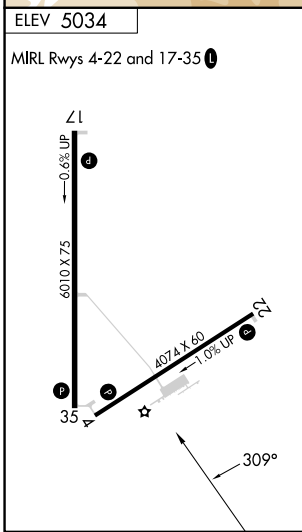
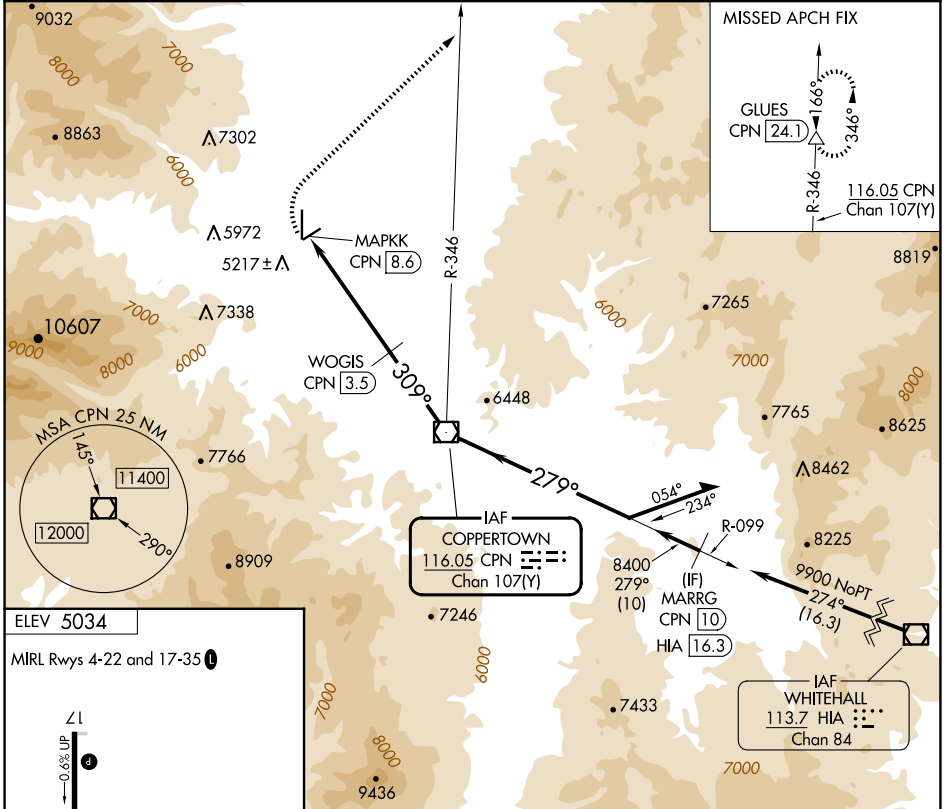


VOR/DME CPN 116.05 Chan 107 (Y)	APP CRS 309°	Rwy Idg TDZE Apt Elev N/A N/A 5034
---	------------------------	---

VOR-A
BOWMAN FLD (3U3)

DME required.	MISSED APPROACH: Climbing right turn to 9200 on heading 030° and on CPN VOR/DME R-346 to GLUES/CPN 24.1 DME and hold.
---------------	---

AWOS-3PT 124.175	SALT LAKE CENTER 132.4 338.3	UNICOM 122.8 (CTAF)
----------------------------	--	-------------------------------



CATEGORY	A	B	C	D
CIRCLING	6120-1¼ 1086 (1100-1¼)	6240-1½ 1206 (1300-1½)	6240-3	1206 (1300-3)

NW-1, 20 FEB 2025 to 20 MAR 2025

NW-1, 20 FEB 2025 to 20 MAR 2025