

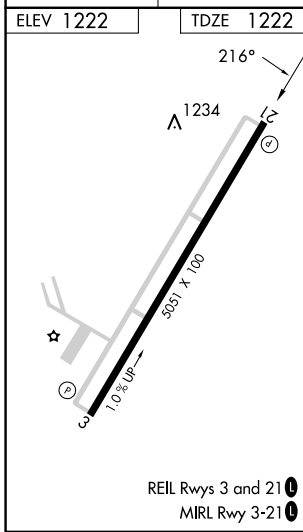
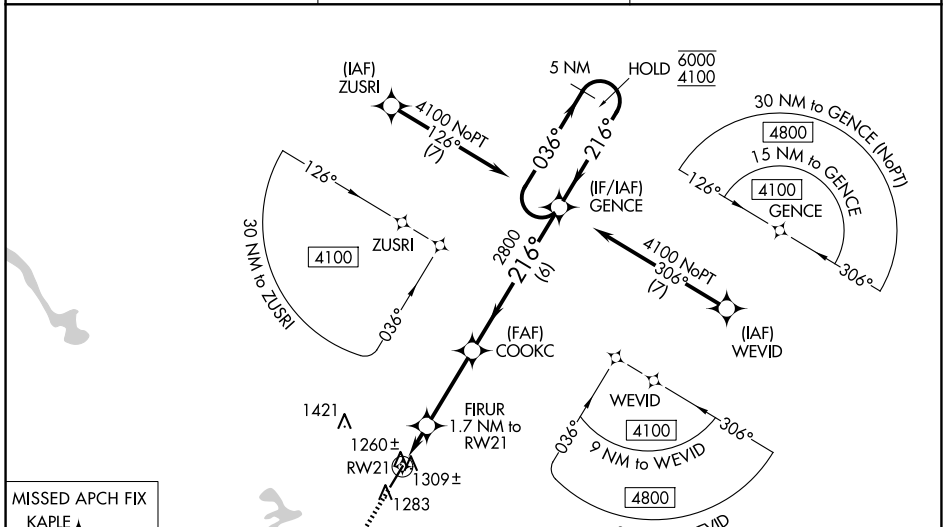
WAAS CH <b>77801</b> <b>W21A</b>	APP CRS <b>216°</b>	Rwy Idg TDZE <b>1222</b> Apt Elev <b>1222</b>	<b>5051</b>
--	------------------------	---	-------------

# RNAV (GPS) RWY 21

BIG SANDY RGNL (SJS)

RNP APCH - GPS.	MISSED APPROACH: Climb to 4300 direct KAPLE and hold.
<p>⚠ Circling Rwy 3 NA at night. For uncompensated Baro-VNAV systems, LNAV/VNAV NA below -17°C or above 54°C.</p>	

AWOS-3 <b>120.175</b>	HUNTINGTON APP CON <b>119.75 270.1</b>	UNICOM <b>123.05 (CTAF) 1</b>
--------------------------	---	----------------------------------



4300 KAPLE	VGSI and RNAV glidepath not coincident (VGSI Angle 3.00/TCH 25).			5 NM Holding Pattern
	FIRUR 1.7 NM to RW21	COOKC 2800	GENCE	6000 / 4100
	1 NM to RW21	1800		GP 3.00° TCH 40
	1 NM, 0.7 NM, -3.1 NM, 6 NM			
CATEGORY	A	B	C	D
LPV DA		1472-3/4	250 (300-3/4)	
LNAV/VNAV DA		1520-7/8	298 (300-7/8)	
LNAV MDA		1560-1	338 (400-1)	
<b>C</b> CIRCLING	1740-1	518 (600-1)	1920-2 698 (700-2)	2020-2 1/2 798 (800-2 1/2)

SE-1, 20 FEB 2025 to 20 MAR 2025

SE-1, 20 FEB 2025 to 20 MAR 2025