

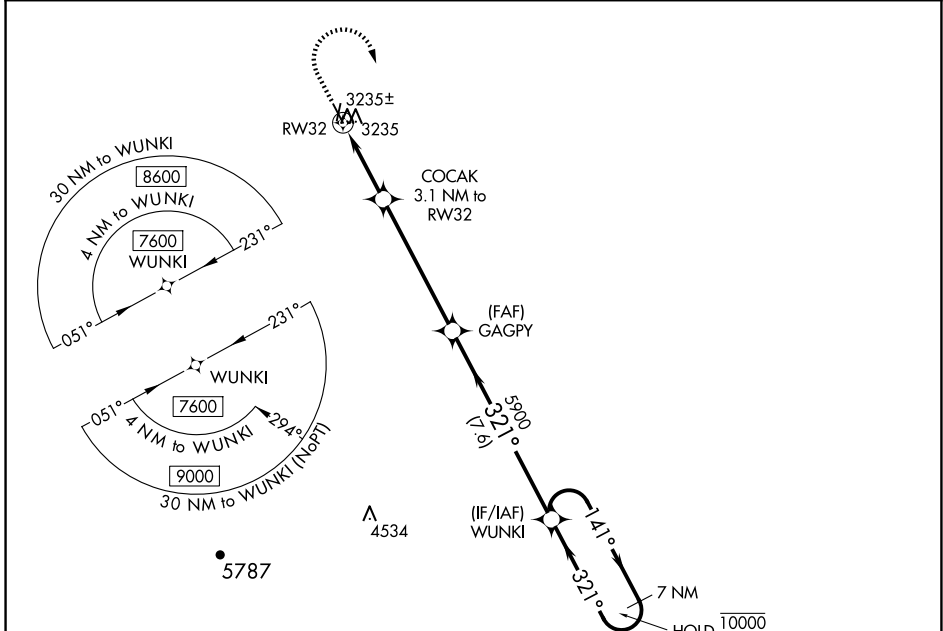
WAAS CH 82728 W32A	APP CRS 321°	Rwy Idg TDZE Apt Elev	4501 3180 3191
--	------------------------	-----------------------------	---

RNAV (GPS) RWY 32

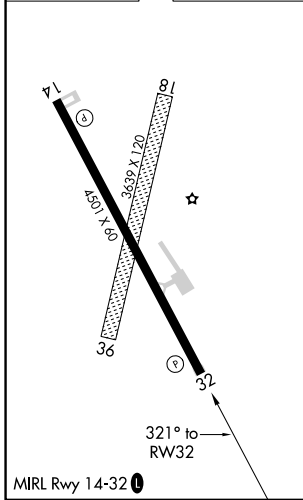
BELLE FOURCHE MUNI (EFC)

RNP APCH.	Baro-VNAV NA. Use Ellsworth altimeter setting.	MISSED APPROACH: Climb to 3800 then climbing right turn to 7600 direct WUNKI and hold. Continue climb-in-hold to 7600.
-----------	---	--

DENVER CENTER 127.95 338.2	AUNICOM 122.8 (CTAF) 0
--------------------------------------	----------------------------------

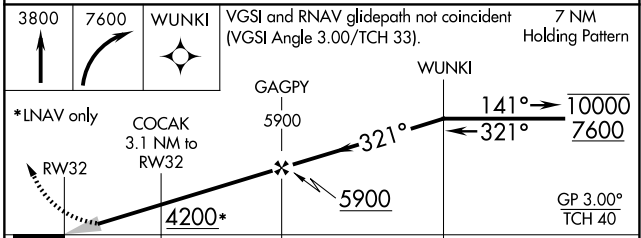


ELEV 3191	TDZE 3180
-----------	-----------



MIRL Rwy 14-32 0
BELLE FOURCHE, SOUTH DAKOTA
Amdt 2 08NOV18

Λ 5266



CATEGORY	A	B	C	D
LPV DA	3553-1		373 (400-1)	NA
LNAV/VNAV DA	3558-1		378 (400-1)	NA
LNAV MDA	3660-1	480 (500-1)	3660-1 ³ / ₈ 480 (500-1 ³ / ₈)	NA
C CIRCLING	3780-1 589 (600-1)	3820-1 629 (700-1)	3820-1 ³ / ₄ 629 (700-1 ³ / ₄)	NA

BELLE FOURCHE MUNI (EFC) RNAV (GPS) RWY 32

NC-1, 20 FEB 2025 to 20 MAR 2025

NC-1, 20 FEB 2025 to 20 MAR 2025