

WAAS CH <b>99743</b> <b>W06A</b>	APP CRS <b>060°</b>	Rwy Idg TDZE <b>861</b> Apt Elev <b>882</b>	<b>5509</b>
--	------------------------	---	-------------

# RNAV (GPS) RWY 6

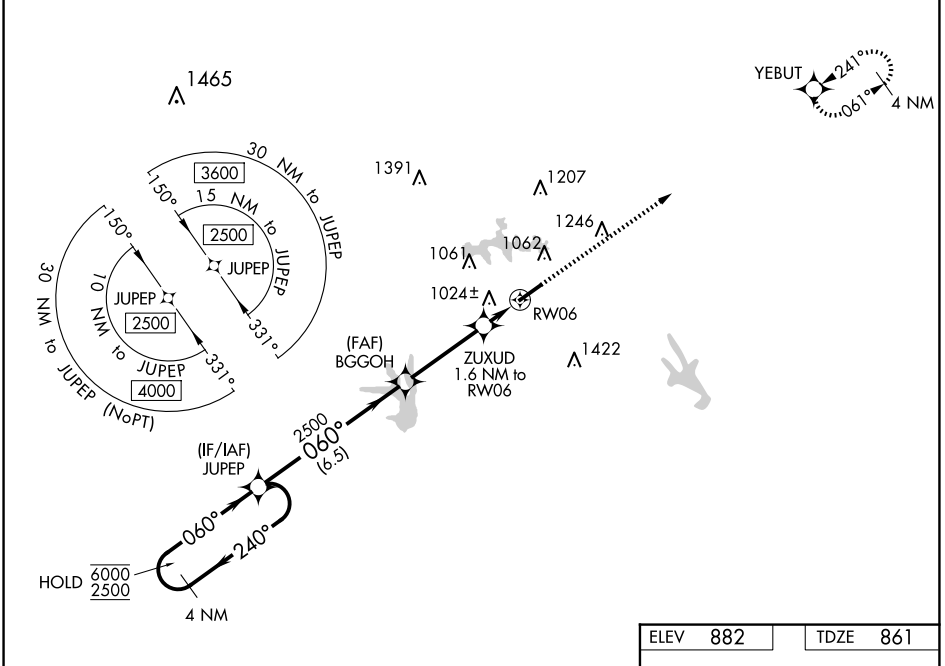
ATLANTA SPEEDWAY (HMP)

RNP APCH.

**⚠** For uncompensated Baro-VNAV systems, LNAV/VNAV NA below -16°C or above 54°C.

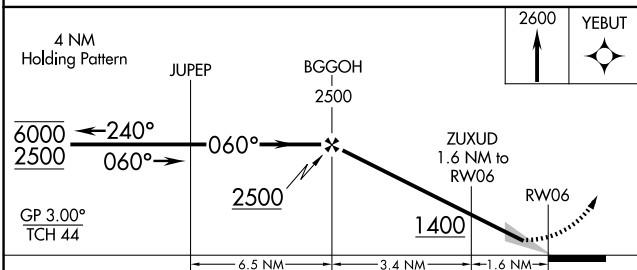
MISSED APPROACH: Climb to 2600 direct YEBUT and hold.

AWOS-3 <b>124.825</b>	ATLANTA APP CON <b>128.575 343.675</b>	CLNC DEL <b>128.575 343.675</b>	UNICOM <b>122.725 (CTAF)</b>
--------------------------	---	------------------------------------	---------------------------------



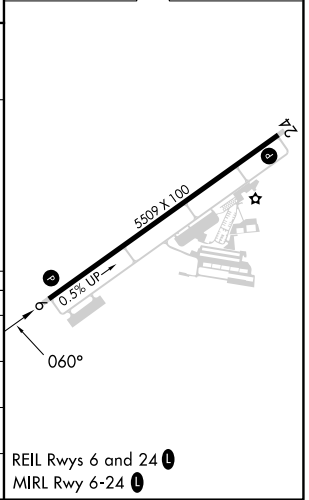
SE-4, 20 FEB 2025 to 20 MAR 2025

SE-4, 20 FEB 2025 to 20 MAR 2025



ELEV <b>882</b>	TDZE <b>861</b>
-----------------	-----------------

CATEGORY	A	B	C	D
LPV DA		1061-3/4	200 (200-3/4)	
LNAV/VNAV DA		1185-1	324 (400-1)	
LNAV MDA	1280-1	419 (400-1)	1280-1 1/8	419 (400-1 1/8)
<b>C</b> CIRCLING	1380-1 498 (500-1)	1400-1 518 (600-1)	1700-2 1/2 818 (900-2 1/2)	1740-2 3/4 858 (900-2 3/4)



REIL Rwy 6 and 24 **Ⓛ**  
MIRL Rwy 6-24 **Ⓛ**