

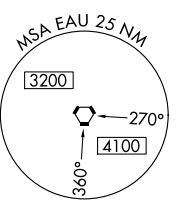
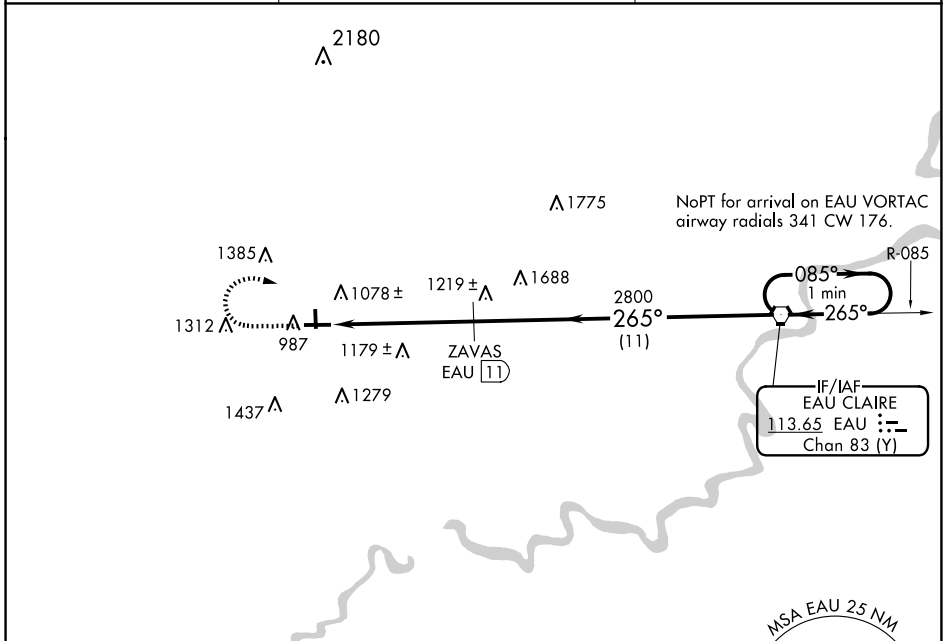
VORTAC EAU <b>113.65</b> Chan <b>83</b> (Y)	APP CRS <b>265°</b>	Rwy Idg TDZE Apt Elev	<b>5074</b> <b>894</b> <b>895</b>
---	------------------------	-----------------------------	---

**VOR/DME RWY 27**  
MENOMONIE MUNI/SCORE FLD (LUM)

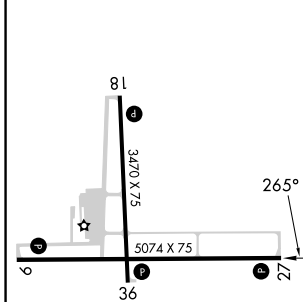
**⚠** When local altimeter setting not received, use Chippewa Valley Rgnl altimeter setting and increase all MDA 60 feet, increase Circling Cat B and C visibility ¼ SM. VDP NA when using Chippewa Valley Rgnl altimeter setting. Rwy 27 helicopter visibility reduction below ¾ SM NA.

**MISSED APPROACH:** Climb to 2000 then climbing right turn to 2800 direct EAU VORTAC and hold.

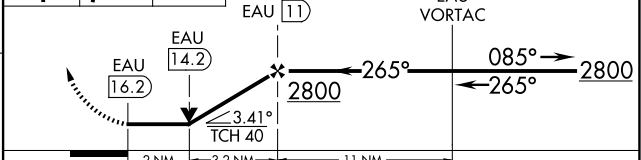
AWOS-3 <b>118.025</b>	MINNEAPOLIS CENTER <b>125.3 335.6</b>	UNICOM <b>122.7</b> (CTAF) <b>0</b>
--------------------------	--	--



ELEV 895	TDZE 894
----------	----------



2000 2800 EAU VGSI and descent angles not coincident (VGSI Angle 3.00/TCH 40). One Minute Holding Pattern



CATEGORY	A	B	C	D
S-27	1560-1	666 (700-1)	1560-1¾ 666 (700-1¾)	NA
<b>C</b> CIRCLING	1560-1 665 (700-1)	1800-1¼ 905 (1000-1¼)	1820-2¾ 925 (1000-2¾)	NA

REIL Rws 9 and 27 **0**  
MIRL Rws 9-27 and 18-36 **0**

EC-3, 20 FEB 2025 to 20 MAR 2025

EC-3, 20 FEB 2025 to 20 MAR 2025