

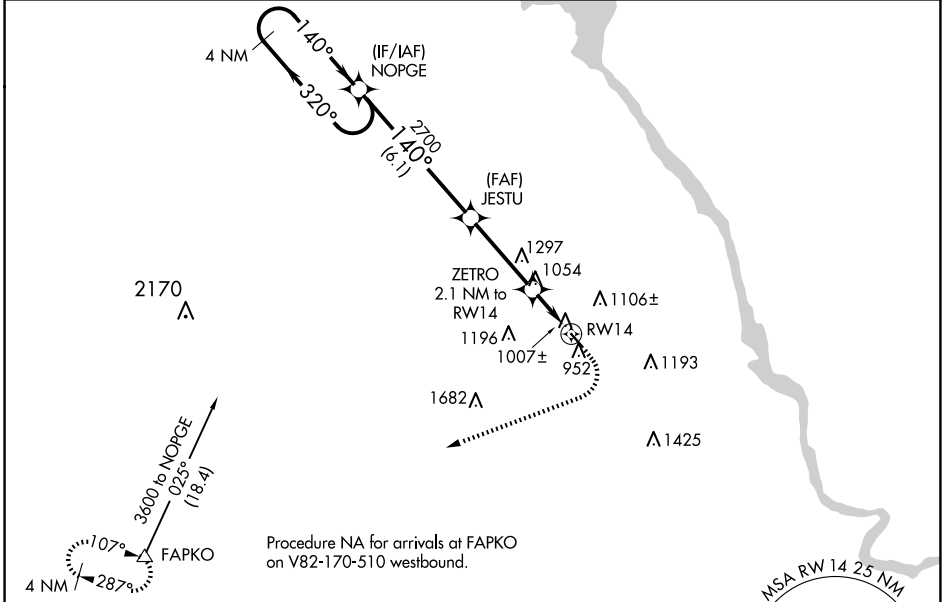
WAAS CH <b>78329</b> <b>W14A</b>	APP CRS <b>140°</b>	Rwy Idg TDZE Apt Elev	<b>3688</b> <b>908</b> <b>908</b>
----------------------------------------	------------------------	-----------------------------	-----------------------------------------

# RNAV (GPS) RWY 14

MAUSTON/NEW LISBON UNION (82C)

RNP APCH.	<p>Use Volk Field altimeter setting; when not received use Wisconsin Dells altimeter setting and increase all MDA 60 feet and all Cat C visibilities ¼ mile. Procedure NA at night. Helicopter visibility reduction below 1 SM NA.</p>	<p>MISSED APPROACH: Climb to 1500 then climbing right turn to 4000 direct FAPKO and hold.</p>
<p>▼ Use Volk Field altimeter setting; when not received use Wisconsin Dells altimeter setting and increase all MDA 60 feet and all Cat C visibilities ¼ mile. Procedure NA at night. Helicopter visibility reduction below 1 SM NA.</p> <p>▲ NA</p>		

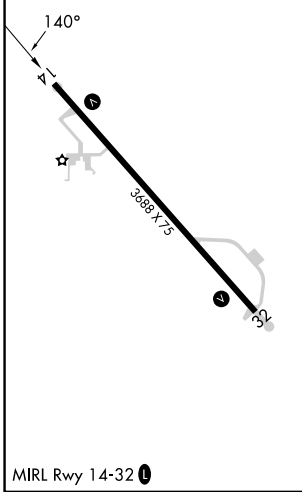
AWOS-3 <b>123.925</b>	VOLK APP CON ★ <b>135.25 244.875</b>	CTAF <b>122.9</b>
--------------------------	-----------------------------------------	----------------------



EC-3, 20 FEB 2025 to 20 MAR 2025

EC-3, 20 FEB 2025 to 20 MAR 2025

ELEV 908	TDZE 908
----------	----------



4 NM Holding Pattern	Visual Segment - Obstacles.	1500	4000	FAPKO
NOPGE	JESTU	↑	↷	△
3600 ← 320°	140° →	ZETRO 2.1 NM to RW14	RW14	
	2700	1620		
	6.1 NM	3.4 NM	2.1 NM	
CATEGORY	A	B	C	D
LP MDA	1280-1 372 (400-1)			NA
LNAV MDA	1340-1 432 (500-1)		1340-1¼ 432 (500-1¼)	