

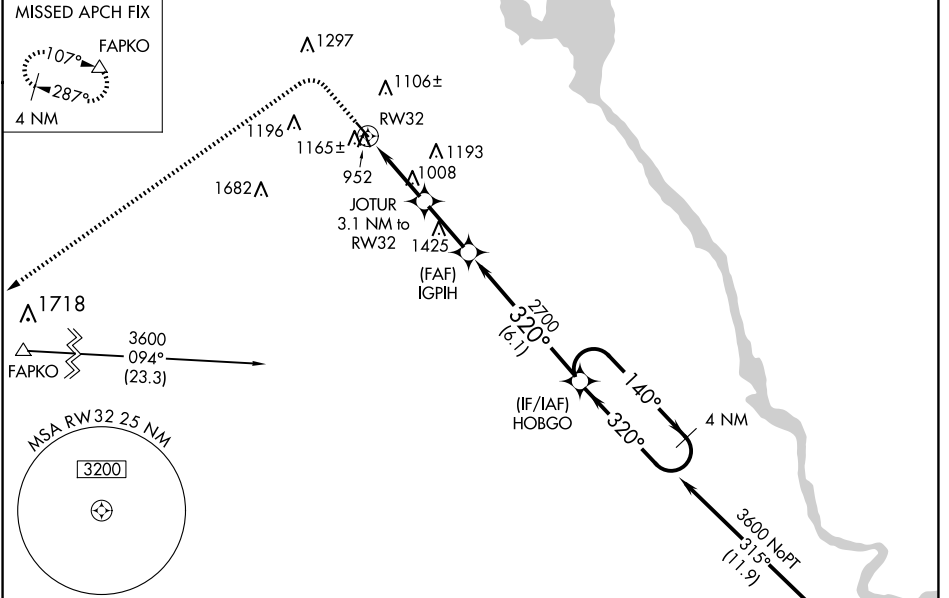
WAAS CH 49129 W32A	APP CRS 320°	Rwy Idg TDZE Apt Elev	3688 905 908
--	------------------------	-----------------------------	---

RNAV (GPS) RWY 32

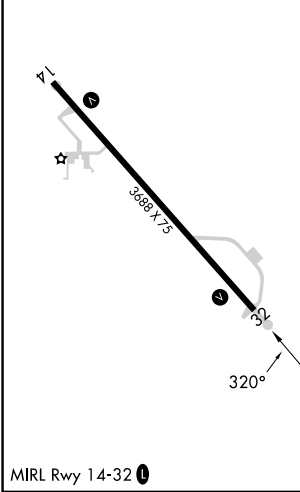
MAUSTON/NEW LISBON UNION (82C)

RNP APCH.	MISSED APPROACH: Climb to 1500 then climbing left turn to 4000 direct FAPKO and hold.
<p>▼ Use Volk Field altimeter setting; when not received use Wisconsin Dells altimeter setting and increase all MDA 60 feet and all Cat C visibilities ¼ mile. Procedure NA at night. Helicopter visibility reduction below 1 SM NA.</p>	

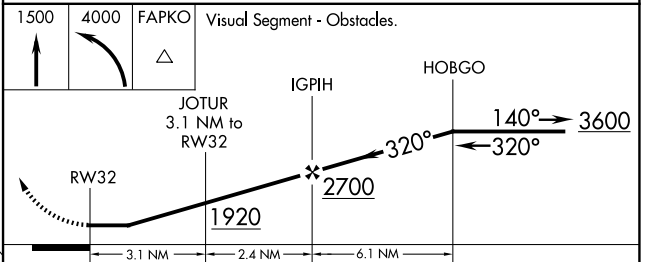
AWOS-3 123.925	VOLK APP CON ★ 135.25 244.875	CTAF 122.9 0
--------------------------	---	------------------------



ELEV 908	TDZE 905
----------	----------



Procedure NA for arrivals at DLL VORTAC airway radials 318 CW 007.



CATEGORY	A	B	C	D
LP MDA	1280-1	375 (400-1)	1280-1½ 375 (400-1½)	NA
LNAV MDA	1440-1	535 (600-1)	1440-1½ 535 (600-1½)	NA

EC-3, 20 FEB 2025 to 20 MAR 2025

EC-3, 20 FEB 2025 to 20 MAR 2025