

WAAS CH <b>72722</b> W17A	APP CRS <b>167°</b>	Rwy Idg <b>3799</b> TDZE <b>225</b> Apt Elev <b>225</b>
---------------------------------	------------------------	---

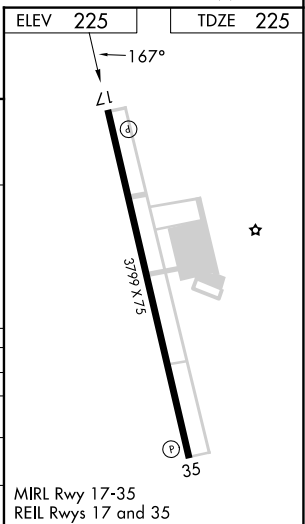
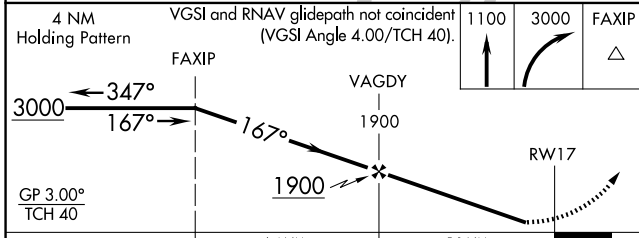
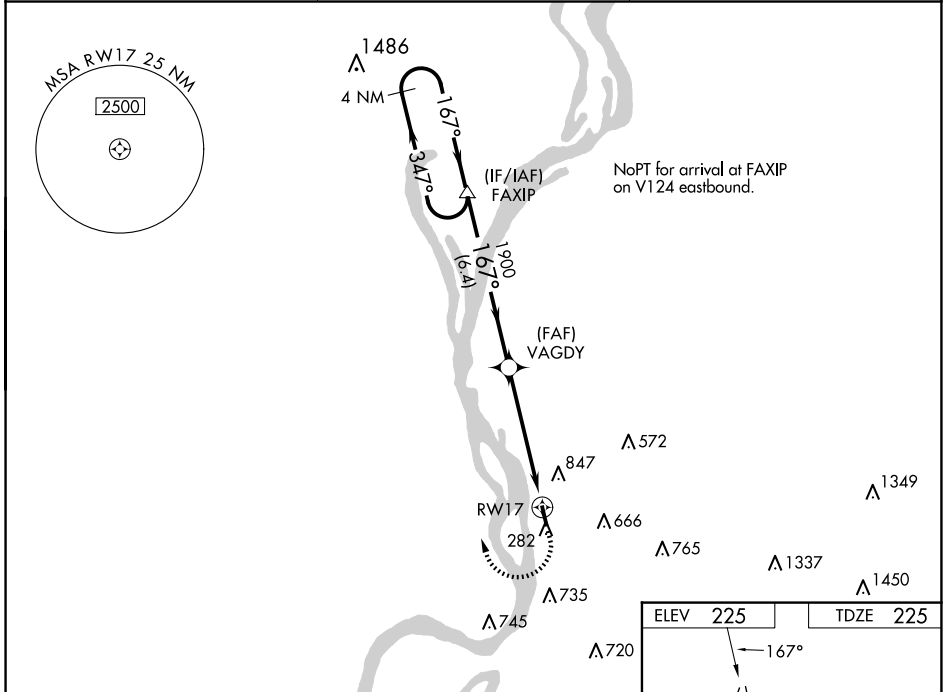
# RNAV (GPS) RWY 17

GENERAL DEWITT SPAIN (M01)

**NA** Baro-VNAV NA when using Memphis Intl altimeter setting. For uncompensated Baro-VNAV systems, LNAV/VNAV NA below -15°C (5°F) or above 54°C (130°F). DME/DME RNP-0.3 NA. When local altimeter setting not received, use Memphis Intl altimeter setting and increase all DA and MDA 40 feet and increase LNAV/VNAV visibility all Cats ¼ mile. Circling Rwy 35 NA at night. Rwy 17, helicopter visibility reduction below ¾ SM NA. Rwy 35, helicopter visibility reduction below 1 SM NA.

**MISSED APPROACH:**  
Climb to 1100 then climbing right turn to 3000 direct FAXIP and hold.

AWOS-3PT <b>118.35</b>	MEMPHIS APP CON <b>119.1 291.6</b>	UNICOM <b>122.7 (CTAF)</b>
---------------------------	---------------------------------------	-------------------------------



CATEGORY	A	B	C	D
LPV DA	475-1 250 (300-1)			NA
LNAV/VNAV DA	1016-3 791 (800-3)			NA
LNAV MDA	1020-1 795 (800-1)	1020-1¼ 795 (800-1¼)	1020-2½ 795 (800-2½)	NA
CIRCLING	1200-1¼ 975 (1000-1¼)	1200-1½ 975 (1000-1½)	1200-3 975 (1000-3)	NA

MIRL Rwy 17-35  
REIL Rwy 17 and 35

SE-1, 20 FEB 2025 to 20 MAR 2025

SE-1, 20 FEB 2025 to 20 MAR 2025