

RNAV (GPS) RWY 13

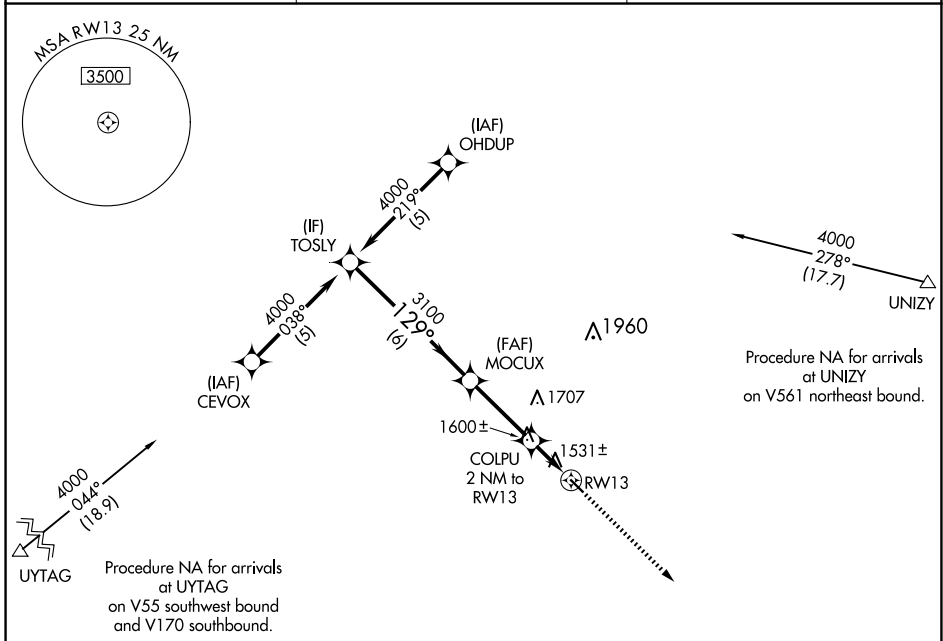
COOPERSTOWN MUNI (S32)

APP CRS 129°	Rwy Idg 3500
	TDZE 1424
	Apt Elev 1424

NA DME/DME RNP-0.3 NA. Visibility reduction by helicopters NA. When local altimeter setting not received, use Jamestown altimeter setting and increase all MDA 100 feet and increase LNAV Cat C visibility 1/4 mile.

MISSED APPROACH: Climb to 3100 direct RAKGU and hold.

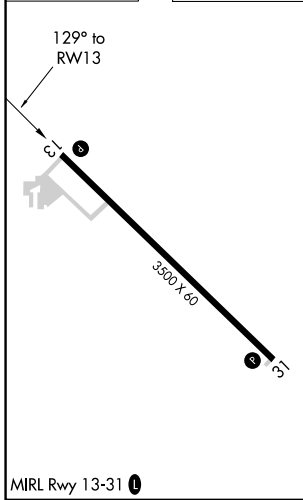
AWOS-3 118.75	MINNEAPOLIS CENTER 132.15 269.6	CTAF 122.9
-------------------------	---	----------------------



NC-1, 20 FEB 2025 to 20 MAR 2025

NC-1, 20 FEB 2025 to 20 MAR 2025

ELEV 1424	TDZE 1424
-----------	-----------



VGSI and descent angles not coincident (VGSI Angle 3.00/TCH 25).

3100 RAKGU

TOSLY 4000

MOCUX 3100

COLPU 2 NM to RW13

3.04° TCH 40 RW13

2100

6 NM 3.1 NM 2 NM

CATEGORY	A	B	C	D
LNAV MDA	1860-1	436 (500-1)	1860-1/4 436 (500-1/4)	NA
CIRCLING	1880-1	456 (500-1)	1880-1/2 456 (500-1/2)	NA