

APP CRS	Rwy Idg	3800
304°	TDZE	1948
	Apt Elev	1950

RNAV (GPS) RWY 30

CROSBY MUNI (D50)

RNP APCH

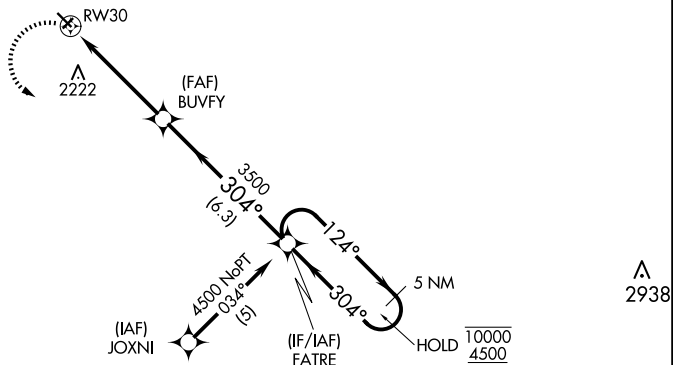
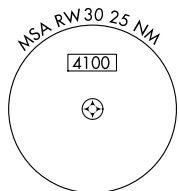
▼ Circling NA to Rwys 3 and 21. Circling Rwy 12 NA at night.
 ▲ Rwy 30 helicopter visibility reduction below 1 SM NA.

MISSED APPROACH: Climbing left turn to 4500 direct FATRE and hold.

AWOS-3 118.025	SALT LAKE CITY CENTER 126.85 305.2	CTAF 122.9 0
--------------------------	--	------------------------

CANADA

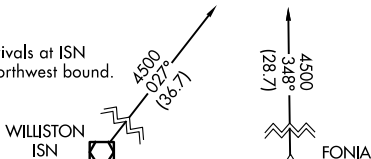
UNITED STATES



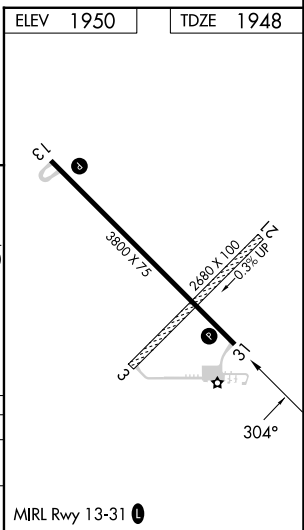
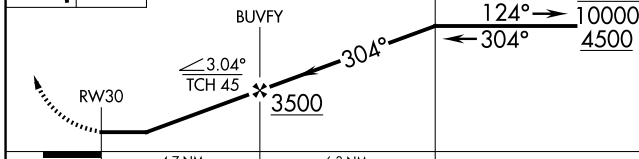
NC-1, 20 FEB 2025 to 20 MAR 2025

NC-1, 20 FEB 2025 to 20 MAR 2025

Procedure NA for arrivals at ISN VOR/DME on V71 northwest bound.



4500 FATRE VGSI and descent angles not coincident (VGSI Angle 3.00/TCH 33). 5 NM Holding Pattern



CATEGORY	A	B	C	D
LNVA MDA	2560-1 612 (700-1)	2560-1 612 (700-1)	2560-1 612 (700-1)	2560-2 612 (700-2)
◻ CIRCLING	2560-1 610 (700-1)	2560-1 610 (700-1)	2560-1 610 (700-1)	2640-2 690 (700-2)