

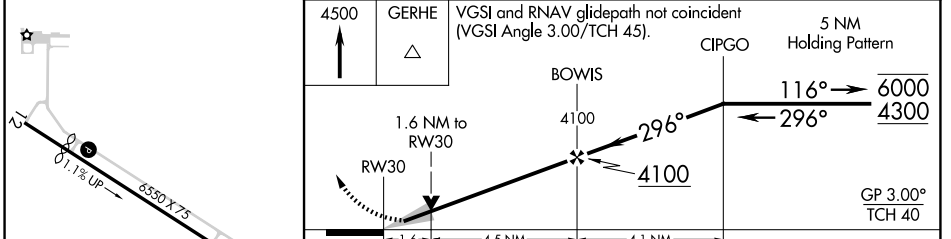
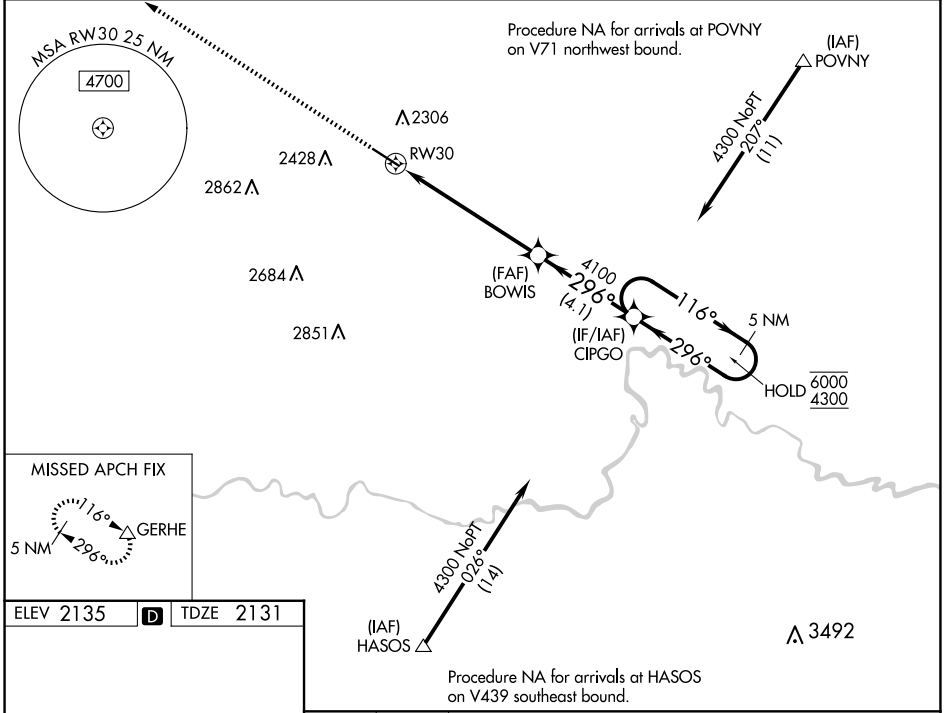
WAAS CH <b>69318</b> <b>W30A</b>	APP CRS <b>296°</b>	Rwy Idg TDZE Apt Elev	<b>5650</b> <b>2131</b> <b>2135</b>
--	------------------------	-----------------------------	---

# RNAV (GPS) RWY 30

WATFORD CITY MUNI (S25)

RNP APCH - GPS.		MISSED APPROACH: Climb to 4500 direct GERHE and hold.
<p><b>⚠</b> VDP NA when using Williston altimeter setting. When local altimeter setting not received, use Williston Basin Intl altimeter setting; increase LPV DA to 2488 feet; all visibility ¼ SM. Increase all MDAs 120 feet and LNAV visibility Cat C/D ¼ SM, and Circling visibility Cat C/D ½ SM.</p>		

AWOS-3PT <b>118.125</b>	SALT LAKE CENTER <b>126.85 305.2</b>	UNICOM <b>122.8 (CTAF) 0</b>
----------------------------	---	---------------------------------



ELEV 2135	<b>D</b>	TDZE 2131																								
<table border="1"> <thead> <tr> <th>CATEGORY</th> <th>A</th> <th>B</th> <th>C</th> <th>D</th> </tr> </thead> <tbody> <tr> <td>LPV DA</td> <td colspan="2">2381-¾</td> <td colspan="2">250 (300-¾)</td> </tr> <tr> <td>LNAV MDA</td> <td>2680-1</td> <td>549 (600-1)</td> <td>2680-1½</td> <td>549 (600-1½)</td> </tr> <tr> <td rowspan="2"><b>C</b> CIRCLING</td> <td>2700-1</td> <td>2760-1</td> <td>2760-1¾</td> <td>2960-2¾</td> </tr> <tr> <td>565 (600-1)</td> <td>625 (700-1)</td> <td>625 (700-1¾)</td> <td>825 (900-2¾)</td> </tr> </tbody> </table>			CATEGORY	A	B	C	D	LPV DA	2381-¾		250 (300-¾)		LNAV MDA	2680-1	549 (600-1)	2680-1½	549 (600-1½)	<b>C</b> CIRCLING	2700-1	2760-1	2760-1¾	2960-2¾	565 (600-1)	625 (700-1)	625 (700-1¾)	825 (900-2¾)
CATEGORY	A	B	C	D																						
LPV DA	2381-¾		250 (300-¾)																							
LNAV MDA	2680-1	549 (600-1)	2680-1½	549 (600-1½)																						
<b>C</b> CIRCLING	2700-1	2760-1	2760-1¾	2960-2¾																						
	565 (600-1)	625 (700-1)	625 (700-1¾)	825 (900-2¾)																						

NC-1, 20 FEB 2025 to 20 MAR 2025

NC-1, 20 FEB 2025 to 20 MAR 2025