

|             |          |             |
|-------------|----------|-------------|
| APP CRS     | Rwy Idg  | <b>2289</b> |
| <b>059°</b> | TDZE     | <b>118</b>  |
|             | Apt Elev | <b>118</b>  |

# RNAV (GPS) RWY 6

POTOMAC AIRFIELD (VKK)

RNP APCH - GPS.

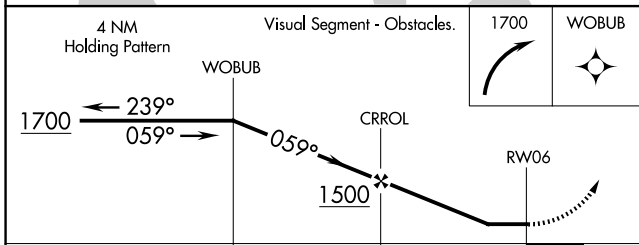
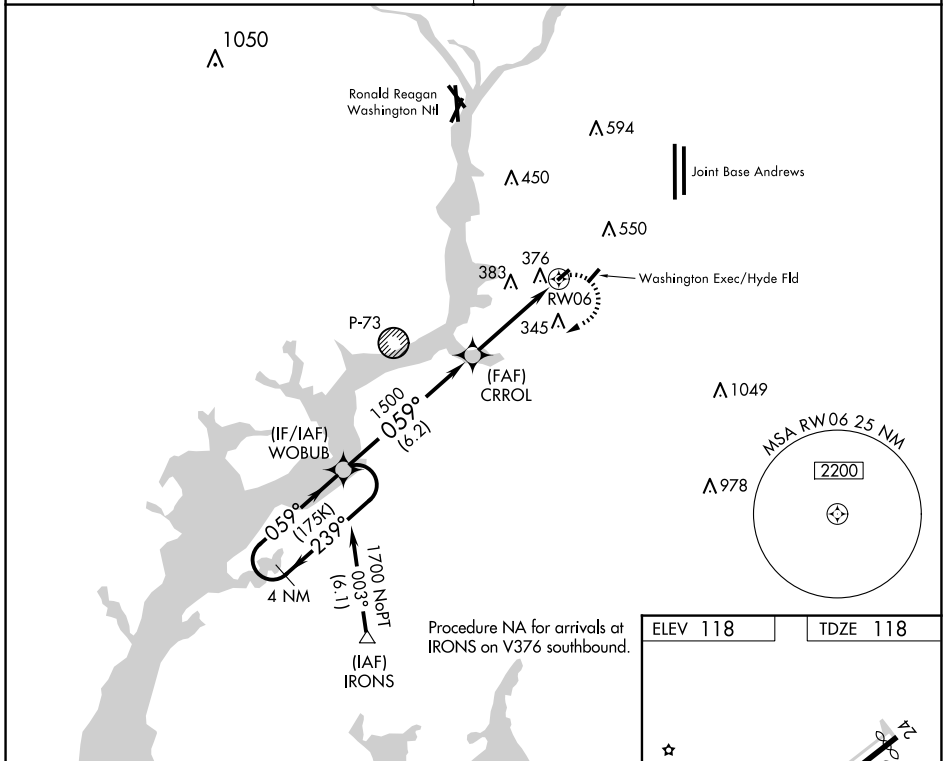
**▽** Circling NA SE of Rwy 6-24. Circling Rwy 24 NA at night. If local altimeter setting not received, use Joint Base Andrews altimeter setting and increase all MDAs 40 feet. Rwy 6 helicopter visibility reduction below 1 SM NA.

**△** NA

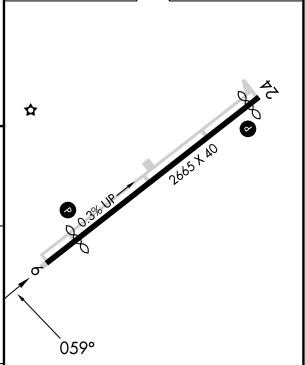
MISSED APPROACH: Climbing right turn to 1700 direct WOBUB and hold.

POTOMAC APP CON  
**124.7 338.2**

UNICOM  
**122.8 (CTAF) 0**



|          |          |
|----------|----------|
| ELEV 118 | TDZE 118 |
|----------|----------|



| CATEGORY | A                    | B | C  | D |
|----------|----------------------|---|----|---|
| RNAV MDA | 680-1<br>562 (600-1) |   | NA |   |
| CIRCLING | 740-1<br>622 (700-1) |   | NA |   |

MIRL Rwy 6-24 0

REIL Rwys 6 and 24

NE-3, 20 FEB 2025 to 20 MAR 2025

NE-3, 20 FEB 2025 to 20 MAR 2025