

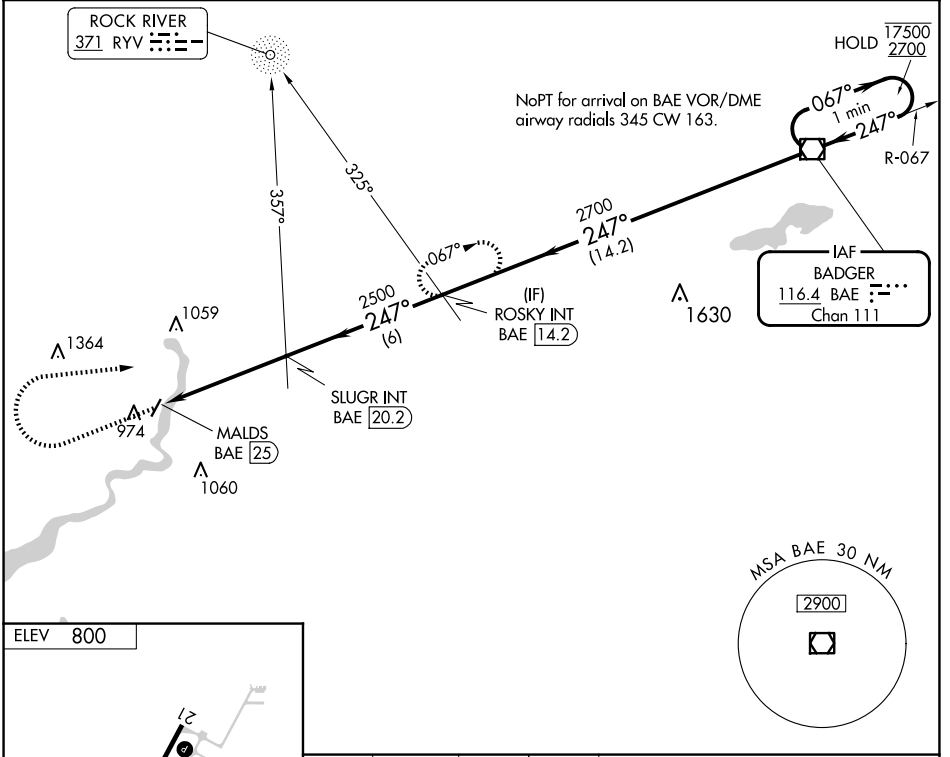
VOR/DME BAE 116.4 Chan 111	APP CRS 247°	Rwy Idg TDZE Apt Elev 800	N/A N/A 800
---	------------------------	--	-------------------

VOR-A

FORT ATKINSON MUNI (61C)

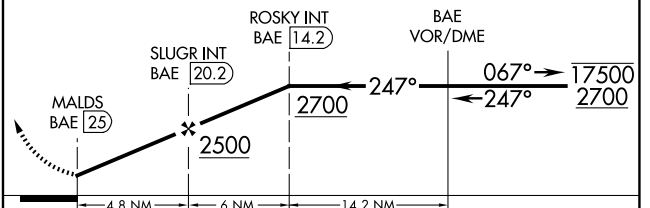
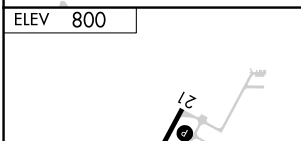
ADF or DME required.	MISSED APPROACH: Climb to 2000 then climbing right turn to 2700 on heading 082° and on BAE VOR/DME R-247 to ROSKY INT/BAE 14.2 DME and hold.
----------------------	--

RYV AWOS-3 119.975	MADISON APP CON * 120.1 350.3	CTAF 122.9
------------------------------	---	----------------------



EC-3, 20 FEB 2025 to 20 MAR 2025

EC-3, 20 FEB 2025 to 20 MAR 2025



FAF to MAP 4.8 NM					CATEGORY	A	B	C	D	
Knots	60	90	120	150	180	1440-1		640 (700-1)	1460-1 ³ / ₄ 660 (700-1 ³ / ₄)	NA
Min:Sec	4:48	3:12	2:24	1:55	1:36	CIRCLING				