

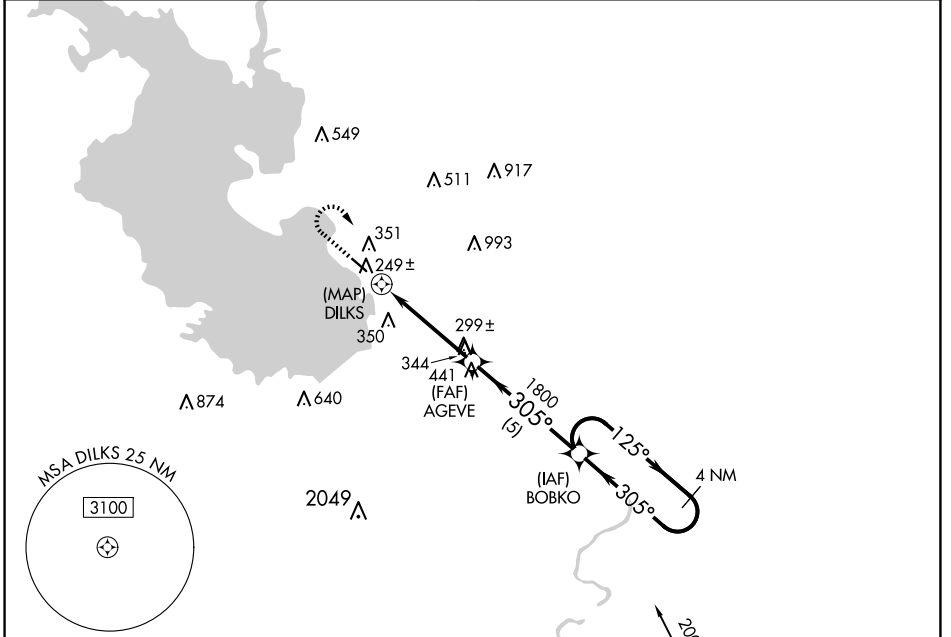
APP CRS 305°	Rwy Idg 3704
	TDZE 151
	Apt Elev 151

RNAV (GPS) RWY 30

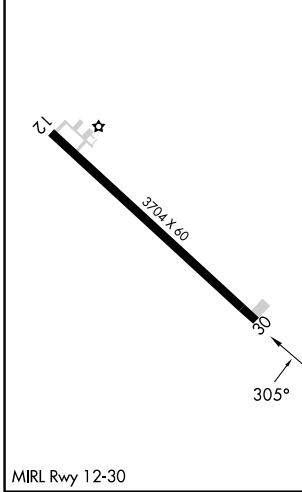
LIVINGSTON MUNI (00R)

RNP APCH-GPS.	MISSED APPROACH: Climb to 1000 then climbing right turn to 2000 direct BOBKO WP and hold.
<p>▼ Use Conroe/North Houston Rgnl altimeter setting. Rwy 30 helicopter</p> <p>▲ NA visibility reduction below 1 SM NA. Night landing: Rwy 30 NA.</p>	

HOUSTON CENTER 125.175 285.575	UNICOM 122.7 (CTAF)
--	-------------------------------



ELEV 151	TDZE 151
----------	----------



1000	2000	BOBKO	Visual Segment - Obstacles.	4 NM Holding Pattern
			AGEVE	BOBKO
DILKS		1800	305°	125° → 2000
0.7		4.3 NM		← 305°
5 NM				
CATEGORY	A	B	C	D
LNAV MDA	680-1	529 (600-1)	680-1½ 529 (600-1½)	NA
CIRCLING	800-1	649 (700-1)	800-1¾ 649 (700-1¾)	NA

SC-5, 20 FEB 2025 to 20 MAR 2025

SC-5, 20 FEB 2025 to 20 MAR 2025