

|             |          |             |
|-------------|----------|-------------|
| APP CRS     | Rwy Idg  | <b>4002</b> |
| <b>181°</b> | TDZE     | <b>444</b>  |
|             | Apt Elev | <b>444</b>  |

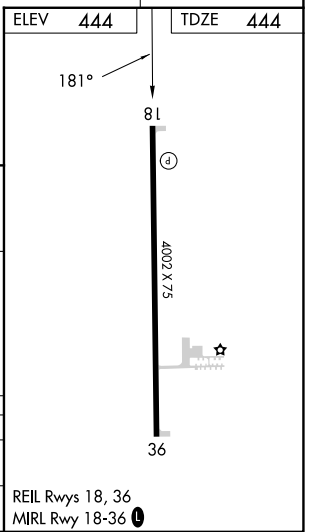
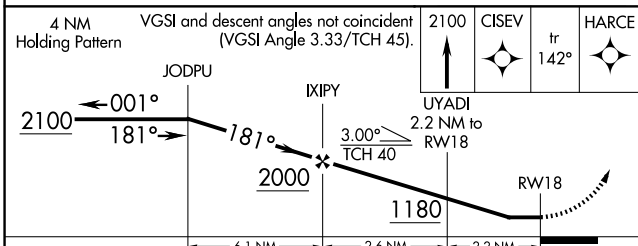
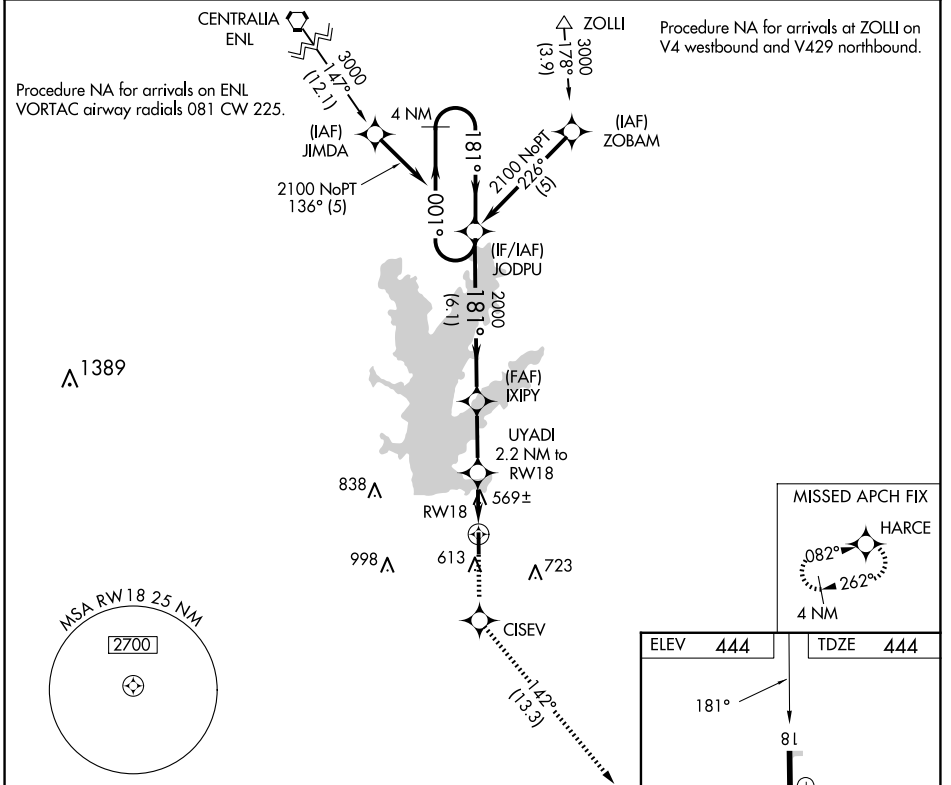
# RNAV (GPS) RWY 18

BENTON MUNI (H96)

**▼** DME/DME RNP-0.3 NA. Rwy 18 helicopter visibility reduction below 3/4 SM NA.  
**▲NA** Use Marion altimeter setting; when not received, use Mount Vernon altimeter setting and increase all MDA 20 feet and increase LNAV Cat C visibility to 1 1/4 mile. Circling Rwy 36 NA at night.

**MISSED APPROACH:** Climb to 2100 direct CISEV and on track 142° to HARCE and hold.

|                                |  |                                 |
|--------------------------------|--|---------------------------------|
| MWA AWOS-3PT<br><b>119.675</b> | KANSAS CITY CENTER<br><b>127.475 346.275</b> | UNICOM<br><b>122.8 (CTAF) 0</b> |
|--------------------------------|--|---------------------------------|



| CATEGORY | A      | B           | C                            | D  |
|----------|--------|-------------|------------------------------|----|
| LNAV MDA | 860-1  | 416 (500-1) | 860-1 1/8<br>416 (500-1 1/8) | NA |
| CIRCLING | 1000-1 | 556 (600-1) | 1120-2<br>676 (700-2)        | NA |

EC-3, 20 FEB 2025 to 20 MAR 2025

EC-3, 20 FEB 2025 to 20 MAR 2025