

APP CRS 173°	Rwy Idg TDZE Apt Elev	4300 1344 1344
------------------------	-----------------------------	---

RNAV (GPS) RWY 17

SEYMOUR MUNI (60F)

RNP APCH - GPS.

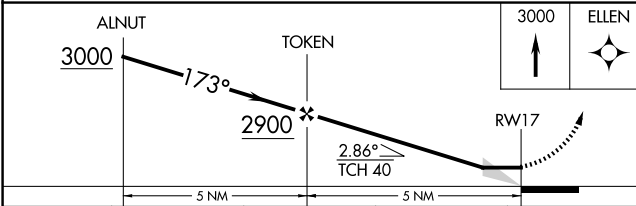
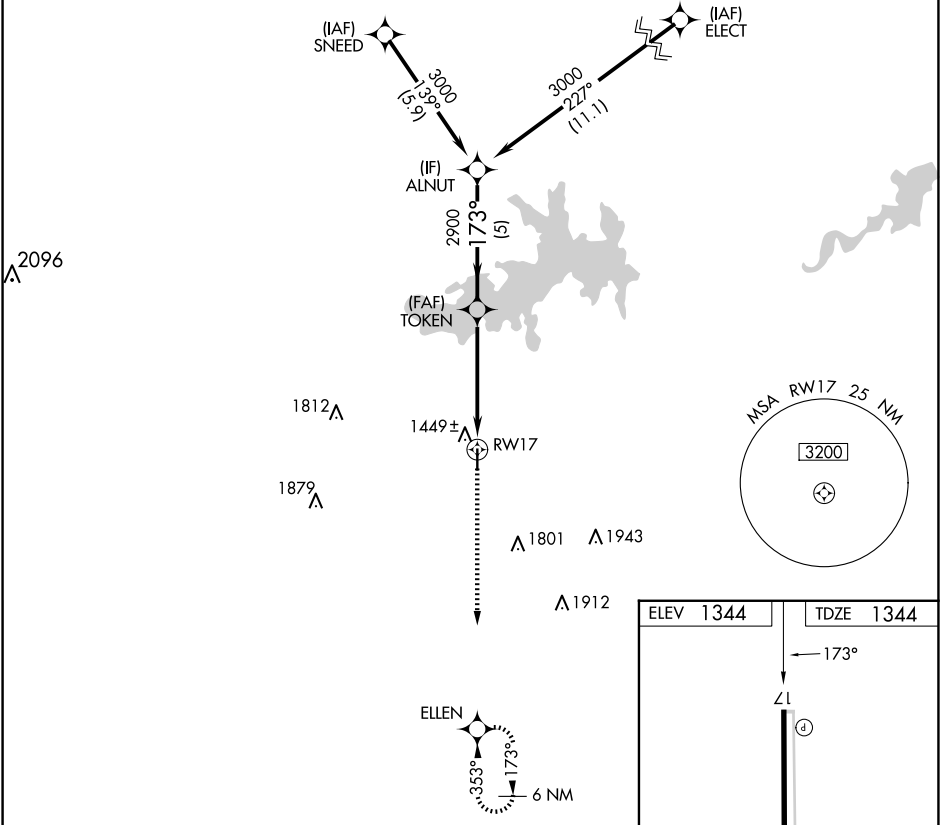
▼ Obtain local altimeter on CTAF; when not received, use Sheppard AFB/Wichita Falls Muni altimeter setting and increase all MDAs 160 feet, increase LNAV Cat C and Circling Cat C visibility 1/2 SM. Procedure NA at night. Rwy 17 helicopter visibility reduction below 1 SM NA.

▲ NA

MISSED APPROACH: Climb to 3000 direct ELLEN and hold.

FORT WORTH CENTER
133.5 350.35

CTAF
122.9



ELEV 1344	TDZE 1344
-----------	-----------

173°

Z1

4300 x 60

35

MIRL Rwy 17-35

CATEGORY	A	B	C	D
LNAV MDA	1700-1		356 (400-1)	
CIRCLING	1780-1 436 (500-1)	1800-1 456 (500-1)	2020-2 676 (700-2)	NA

SC-2, 20 FEB 2025 to 20 MAR 2025

SC-2, 20 FEB 2025 to 20 MAR 2025