

|  |                        |                             |   |
|--|------------------------|-----------------------------|---|
| WAAS<br>CH <b>99746</b><br><b>W31A</b> | APP CRS<br><b>331°</b> | Rwy Idg<br>TDZE<br>Apt Elev | <b>5600</b><br><b>4230</b><br><b>4234</b> |
|--|------------------------|-----------------------------|---|

# RNAV (GPS) RWY 31

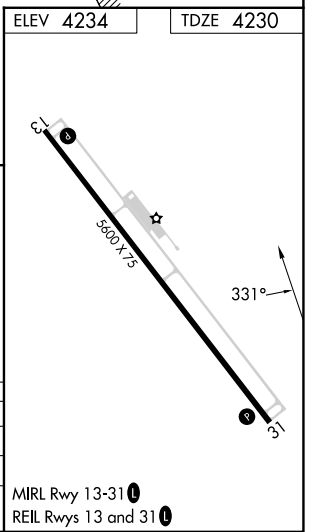
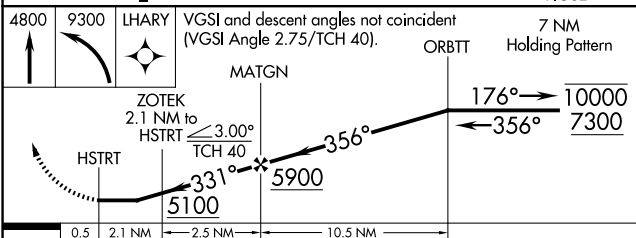
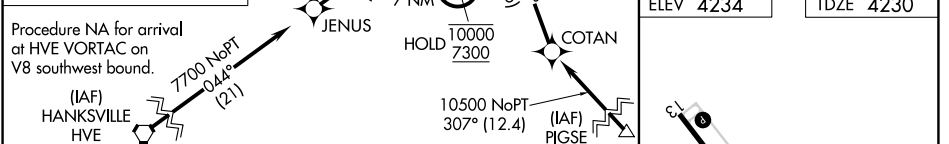
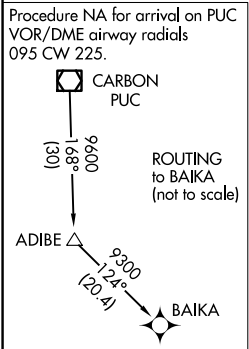
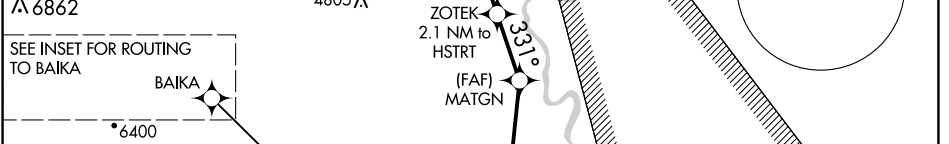
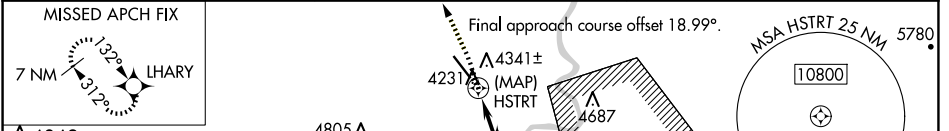
GREEN RIVER MUNI (U34)

RNP APCH - GPS.

**NA** Rwy 31 helicopter visibility reduction below 3/4 SM NA. Use Moab altimeter setting; when not received, use Hanksville altimeter setting and increase all MDAs 20 feet and LP visibility Cat C/D 1/2 SM, and Circling visibility Cat D 1/2 SM. Circling NA for Cats C and D northeast of Rwy 13-31.

MISSED APPROACH: Climb to 4800, then climbing left turn to 9300 direct LHARY and hold, continue climb-in-hold to 9300.

|                            |   |                               |
|----------------------------|---|-------------------------------|
| CNY ASOS<br><b>118.525</b> | SALT LAKE CENTER<br><b>133.6 269.25</b> | UNICOM<br><b>122.8 (CTAF)</b> |
|----------------------------|---|-------------------------------|



| CATEGORY  | A                  | B                  | C                          | D                          |
|-----------|--------------------|--------------------|----------------------------|----------------------------|
| LP MDA    | 4640-1 410 (500-1) |                    | 4640-1 1/2 410 (500-1 1/2) |                            |
| LN AV MDA | 4700-1 470 (500-1) |                    | 4700-1 3/4 470 (500-1 3/4) |                            |
| CIRCLING  | 4800-1 566 (600-1) | 4840-1 606 (700-1) | 4840-1 3/4 606 (700-1 3/4) | 5100-2 3/4 866 (900-2 3/4) |

SW-4, 20 FEB 2025 to 20 MAR 2025

SW-4, 20 FEB 2025 to 20 MAR 2025