

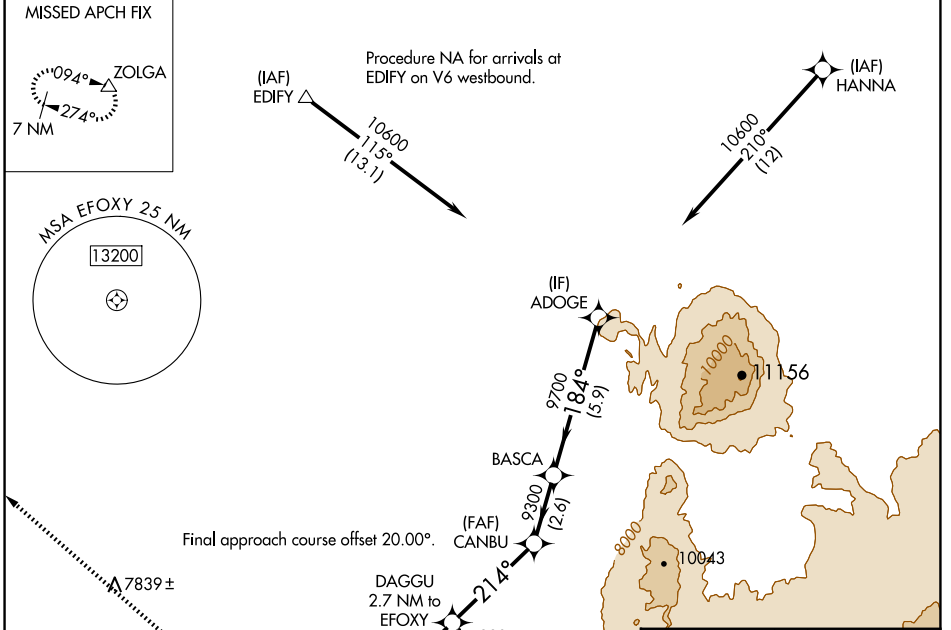
APP CRS <b>214°</b>	Rwy Idg <b>8801</b>
TDZE <b>6911</b>	Apt Elev <b>7014</b>

# RNAV (GPS) RWY 23

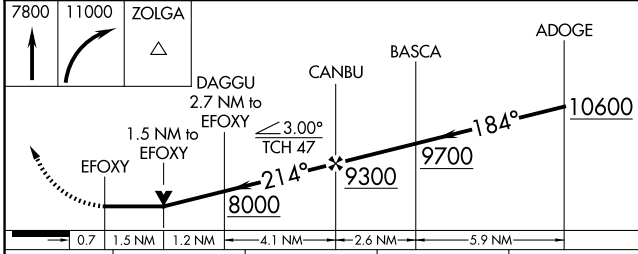
SHIVELY FLD (SAA)

RNP APCH - GPS.	MISSED APPROACH: Climb to 7800 then climbing right turn to 11000 direct ZOLGA and hold.
Rwy 23 helicopter visibility reduction below 3/4 SM NA.	

AWOS-3PT <b>118.175</b>	DENVER CENTER <b>132.1 254.35</b>	UNICOM <b>122.8 (CTAF) 1</b>
----------------------------	--------------------------------------	---------------------------------



ELEV 7014	TDZE 6911
-----------	-----------



CATEGORY	A	B	C	D
LNVA MDA	7620-1	709 (700-1)	7620-2	709 (700-2)
CIRCLING	7620-1	606 (700-1)	7740-2 726 (800-2)	7860-2 3/4 846 (900-2 3/4)

REIL Rws 5 and 23 1

MIRL Rwy 5-23 1

7058

NW-1, 20 FEB 2025 to 20 MAR 2025

NW-1, 20 FEB 2025 to 20 MAR 2025