

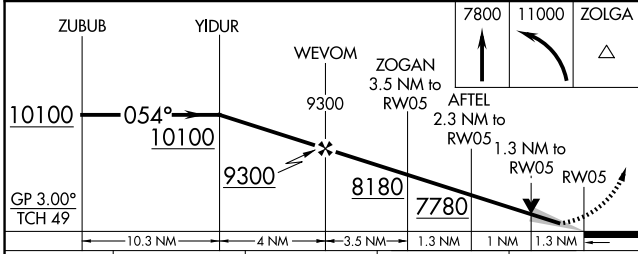
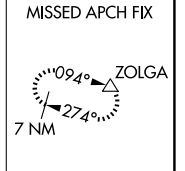
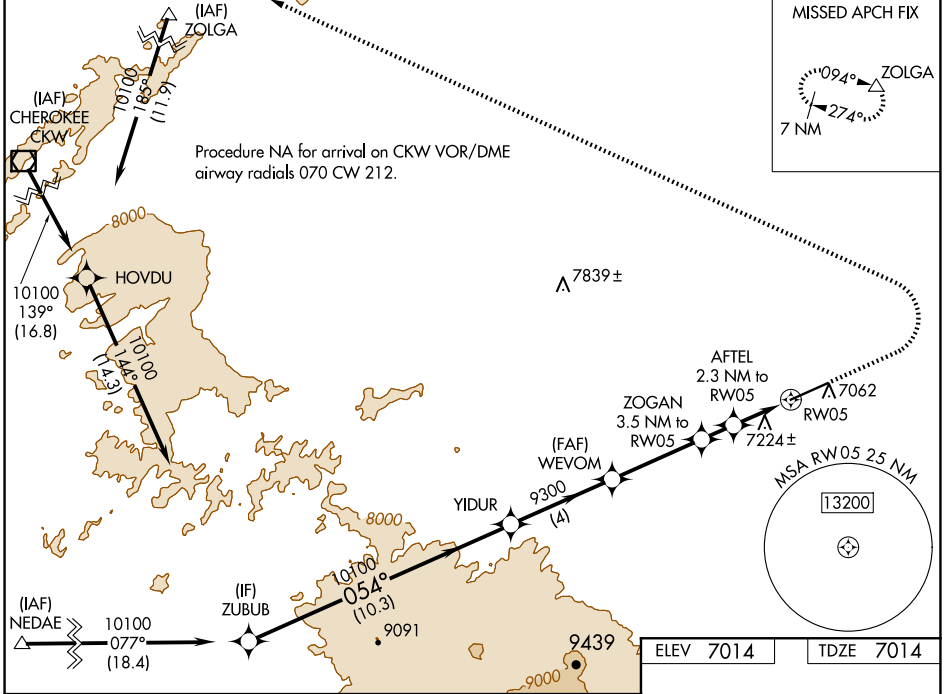
WAAS CH 65820 W05A	APP CRS 054°	Rwy ldg TDZE Apt Elev	8801 7014 7014
--	------------------------	-----------------------------	---

RNAV (GPS) RWY 5

SHIVELY FLD (SAA)

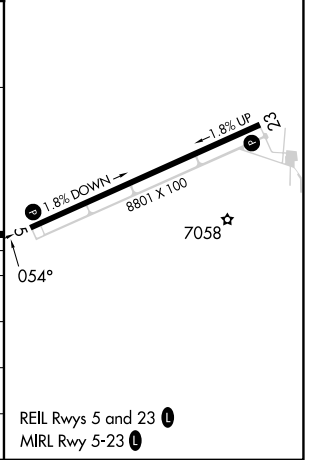
RNP APCH - GPS.	MISSED APPROACH: Climb to 7800 then climbing left turn to 11000 direct ZOLGA and hold.
<p>▼ For uncompensated Baro-VNAV systems, LNAV/VNAV NA below -28°C or above 54°C.</p>	

AWOS-3PT 118.175	DENVER CENTER 132.1 254.35	UNICOM 122.8 (CTAF) 0
----------------------------	--------------------------------------	---------------------------------



ELEV 7014	TDZE 7014
-----------	-----------

CATEGORY	A	B	C	D
LPV DA	7264- ³ / ₄		250 (300- ³ / ₄)	
LNAV/VNAV DA	7546-1 ¹ / ₂		532 (600-1 ¹ / ₂)	
LNAV MDA	7480-1 466 (500-1)		7480-1 ³ / ₈ 466 (500-1 ³ / ₈)	
CIRCLING	7540-1 526 (600-1)		7740-2 726 (800-2) 7860-2 ³ / ₄ 846 (900-2 ³ / ₄)	



NW-1, 20 FEB 2025 to 20 MAR 2025

NW-1, 20 FEB 2025 to 20 MAR 2025