

(AALLE:AALLE3) 07OCT21

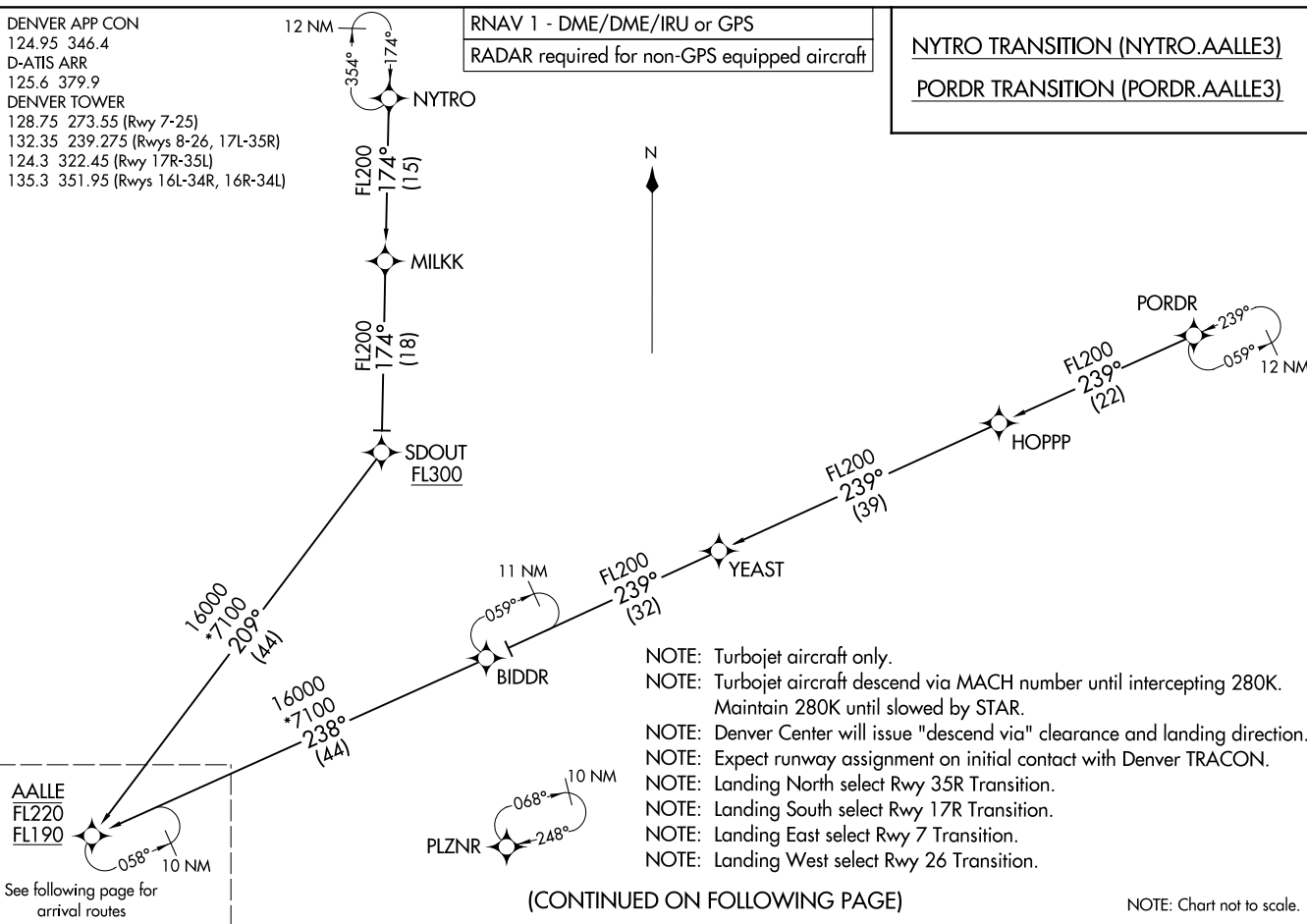
AALLE THREE ARRIVAL(RNAV) Transition Routes

DENVER, COLORADO
DENVER INTL (DEN)

DENVER APP CON
124.95 346.4
D-ATIS ARR
125.6 379.9
DENVER TOWER
128.75 273.55 (Rwy 7-25)
132.35 239.275 (Rwys 8-26, 17L-35R)
124.3 322.45 (Rwy 17R-35L)
135.3 351.95 (Rwys 16L-34R, 16R-34L)

RNAV 1 - DME/DME/IRU or GPS
RADAR required for non-GPS equipped aircraft

NYTRO TRANSITION (NYTRO.AALLE3)
PORDR TRANSITION (PORDR.AALLE3)



- NOTE: Turbojet aircraft only.
- NOTE: Turbojet aircraft descend via MACH number until intercepting 280K. Maintain 280K until slowed by STAR.
- NOTE: Denver Center will issue "descend via" clearance and landing direction.
- NOTE: Expect runway assignment on initial contact with Denver TRACON.
- NOTE: Landing North select Rwy 35R Transition.
- NOTE: Landing South select Rwy 17R Transition.
- NOTE: Landing East select Rwy 7 Transition.
- NOTE: Landing West select Rwy 26 Transition.

(CONTINUED ON FOLLOWING PAGE)

NOTE: Chart not to scale.

(AALLE:AALLE3) 23110

AL-9077 (FAA)
AALLE THREE ARRIVAL(RNAV) Transition Routes

DENVER INTL (DEN)
DENVER, COLORADO

AALIE THREE ARRIVAL (RNAV) Arrival Routes
 (AALIE, AALIE3) 07OCT21

DENVER, COLORADO
 DENVER INTL (DEN)

DENVER APP CON
 124.95 346.4
 D-ATIS ARR
 125.6 379.9
 DENVER TOWER
 128.75 273.55 (Rwy 7-25)
 132.35 239.275 (Rwys 8-26, 17L-35R)
 124.3 322.45 (Rwy 17R-35L)
 135.3 351.95 (Rwys 16L-34R, 16R-34L)

RNAV 1 - DME/DME/IRU or GPS
 RADAR required for non-GPS equipped aircraft

AALLE
 FL220
 FL190

KIPPR
 12000 210K
 Ldg Rwys 16L/R and 17L/R

HIGUN
 14000 210K

HEDDD
 FL210 250K
 16000

CRUNK
 14000
 Ldg Rwys 25 and 26

DEELO
 17000
 15000

HAITR
 11000 210K
 Ldg Rwys 7 and 8

JEPHF
 15000 250K
 13000

FULLA
 15000 250K
 13000

GRILA
 173° (5)

FFFAT
 173° (6)

HIMOM
 11000 210K
 Ldg Rwys 34L/R

DOGGG
 11000 210K
 Ldg Rwys 35L/R

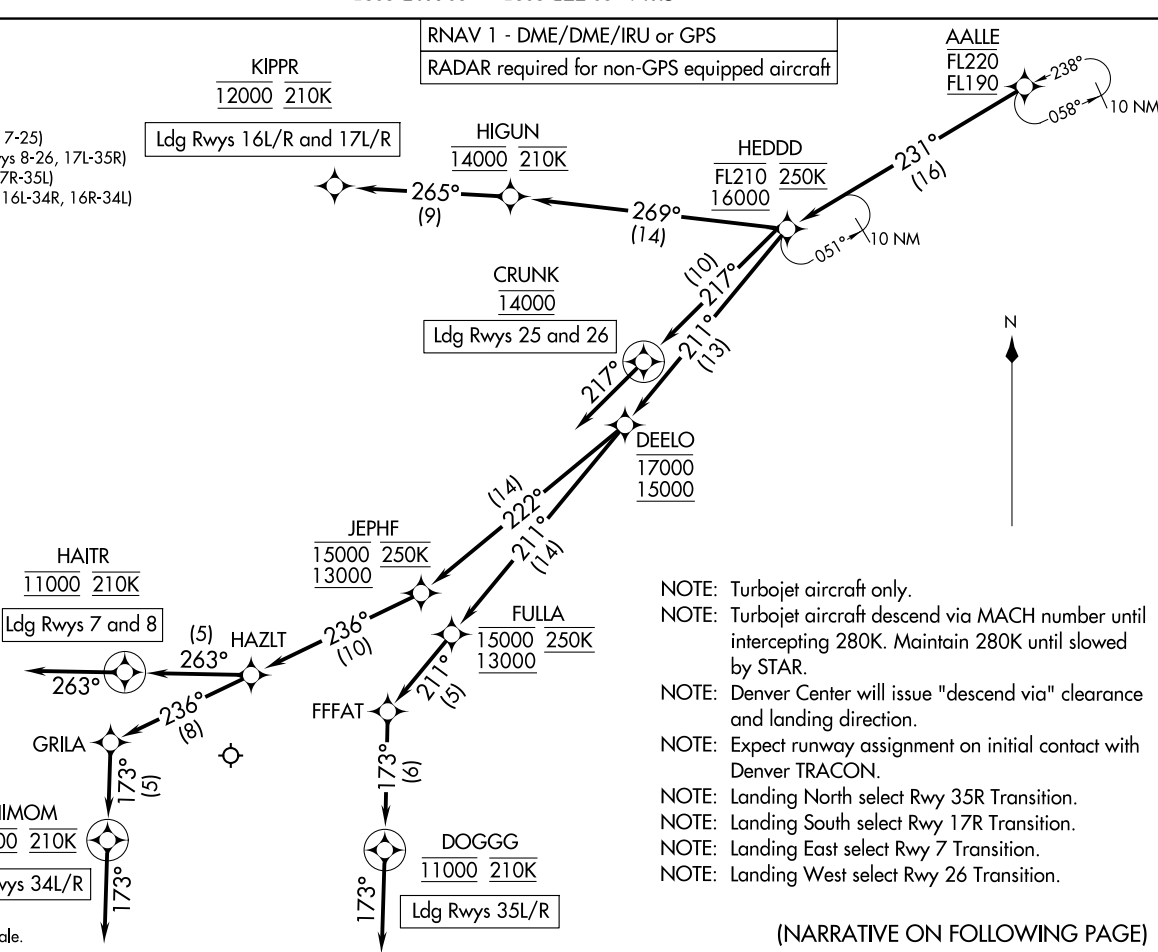
- NOTE: Turbojet aircraft only.
- NOTE: Turbojet aircraft descend via MACH number until intercepting 280K. Maintain 280K until slowed by STAR.
- NOTE: Denver Center will issue "descend via" clearance and landing direction.
- NOTE: Expect runway assignment on initial contact with Denver TRACON.
- NOTE: Landing North select Rwy 35R Transition.
- NOTE: Landing South select Rwy 17R Transition.
- NOTE: Landing East select Rwy 7 Transition.
- NOTE: Landing West select Rwy 26 Transition.

(NARRATIVE ON FOLLOWING PAGE)

NOTE: Chart not to scale.

(AALIE, AALIE3) 23110
AALIE THREE ARRIVAL (RNAV) Arrival Routes
 AL-9077 (FAA)

DENVER INTL (DEN)
 DENVER, COLORADO



ARRIVAL ROUTE DESCRIPTION

From AALLE on track 231° to cross HEDDD between 16000 and FL210 and at 250K.

LANDING RUNWAYS 7, 8: From HEDDD on track 211° to cross DEELO between 15000 and 17000, then on track 222° to cross JEPHF between 13000 and 15000 and at 250K, then on track 236° to HAZLT, then on track 263° to cross HAITR at 11000 and at 210K, then on track 263°. Expect RADAR vectors to final approach course.

LANDING RUNWAYS 16L/R, 17L/R: From HEDDD on track 269° to cross HIGUN at 14000 and at 210K, then on track 265° to cross KIPPR at 12000 and at 210K. Expect ILS or LOC RWY 16L/R or ILS or LOC RWY 17L/R approach.

LANDING RUNWAYS 25, 26: From HEDDD on track 217° to cross CRUNK at 14000, then on track 217°. Expect RADAR vectors to final approach course.

LANDING RUNWAYS 34L/R: From HEDDD on track 211° to cross DEELO between 15000 and 17000, then on track 222° to cross JEPHF between 13000 and 15000 and at 250K, then on track 236° to HAZLT, then on track 236° to GRILA, then on track 173° to cross HIMOM at 11000 and at 210K, then on track 173°. Expect RADAR vectors to final approach course.

LANDING RUNWAYS 35L/R: From HEDDD on track 211° to cross DEELO between 15000 and 17000, then on track 211° to cross FULLA between 13000 and 15000 and at 250K, then on track 211° to FFFAT, then on track 173° to cross DOGGG at 11000 and at 210K, then on track 173°. Expect RADAR vectors to final approach course.

LOST COMMUNICATIONS: In the event of lost communications prior to runway transition assignment, when DEN is landing south, execute the ILS RWY 17R, when DEN is landing north, execute the ILS RWY 35R.

SW-1, 20 FEB 2025 to 20 MAR 2025

SW-1, 20 FEB 2025 to 20 MAR 2025