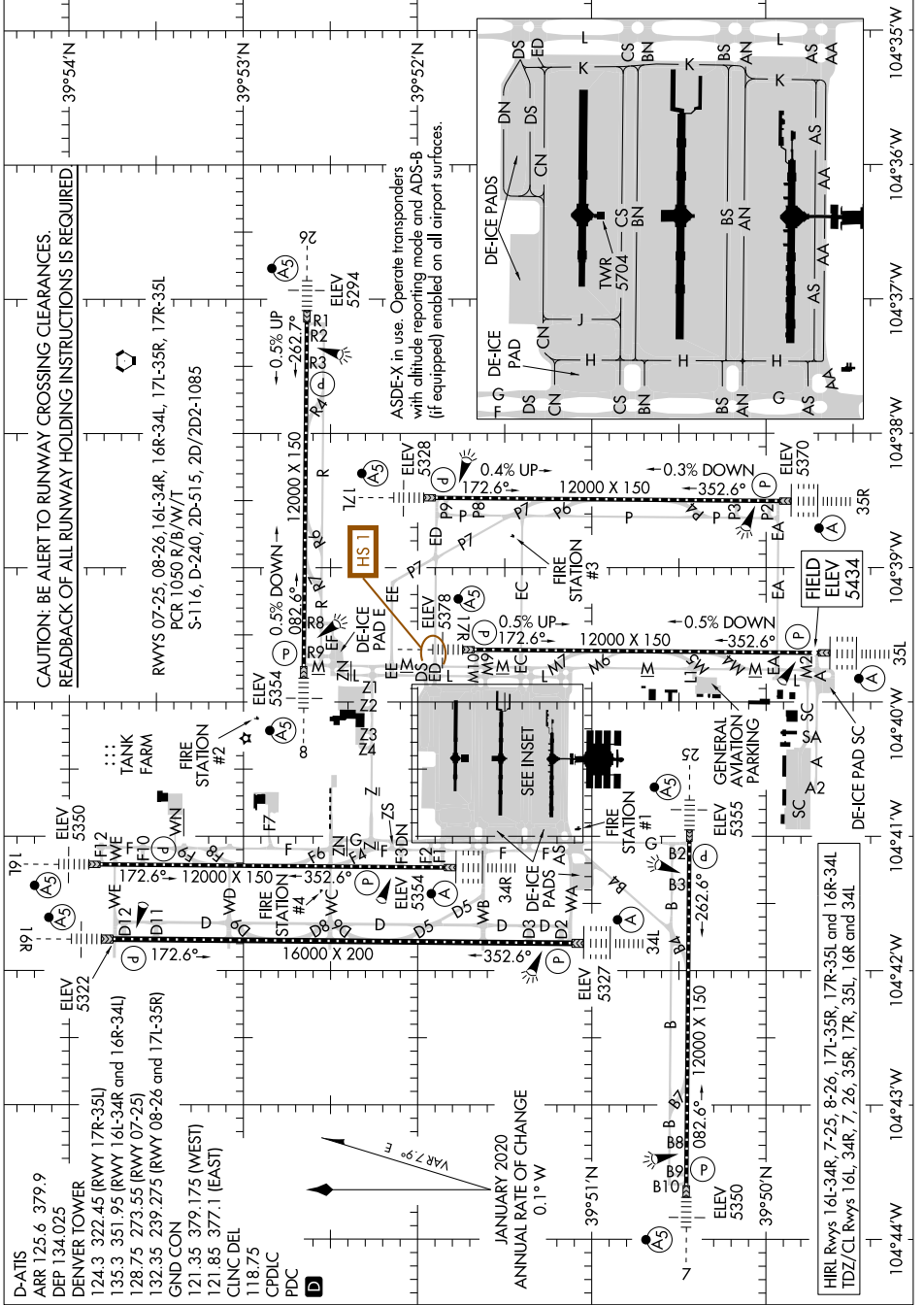


AIRPORT DIAGRAM

AL-9077 (FAA)

DENVER INTL (D/EN)
DENVER, COLORADO

SW-1, 20 FEB 2025 to 20 MAR 2025



AIRPORT DIAGRAM

DENVER, COLORADO
DENVER INTL (D/EN)

SW-1, 20 FEB 2025 to 20 MAR 2025

D-ATIS
ARR 125.6 379.9
DEP 134.025
DENVER TOWER
124.3 322.45 (RWY 17R-35L)
135.3 351.95 (RWY 16L-34R and 16R-34L)
128.75 237.55 (RWY 07-25)
132.35 239.275 (RWY 08-26 and 17L-35R)
GND CON
121.35 379.175 (WEST)
121.85 377.1 (EAST)
CLNC DEL
118.75
CPDIC
PDC

CAUTION: BE ALERT TO RUNWAY CROSSING CLEARANCES.
READBACK OF ALL RUNWAY HOLDING INSTRUCTIONS IS REQUIRED

RWYS 07-25, 08-26, 16L-34R, 16R-34L, 17L-35R, 17R-35L
PCR 1050 R/B/W/T
S-116, D-240, 2D-51.5, 2D/2D2-1085

ASDEX in use. Operate transponders with altitude reporting mode and ADS-B (if equipped) enabled on all airport surfaces.

ANNUAL RATE OF CHANGE
0.1° W

JANUARY 2020
ANNUAL RATE OF CHANGE
0.1° W

DE-ICE PAD
CN
DS
DN
CS
BN
BS
AN
AS
AA

TWR 5704
BS
AN
AS
AA

DE-ICE PAD
CN
DS
DN
CS
BN
BS
AN
AS
AA

DE-ICE PAD
CN
DS
DN
CS
BN
BS
AN
AS
AA

DE-ICE PAD
CN
DS
DN
CS
BN
BS
AN
AS
AA

DE-ICE PAD
CN
DS
DN
CS
BN
BS
AN
AS
AA

DE-ICE PAD SC

FIELD ELEV 5434

FIELD ELEV 5434

FIELD ELEV 5434

FIELD ELEV 5434

FIELD ELEV 5434

FIELD ELEV 5434

FIELD ELEV 5434

FIELD ELEV 5434

FIELD ELEV 5434

FIELD ELEV 5434

FIELD ELEV 5434

FIELD ELEV 5434