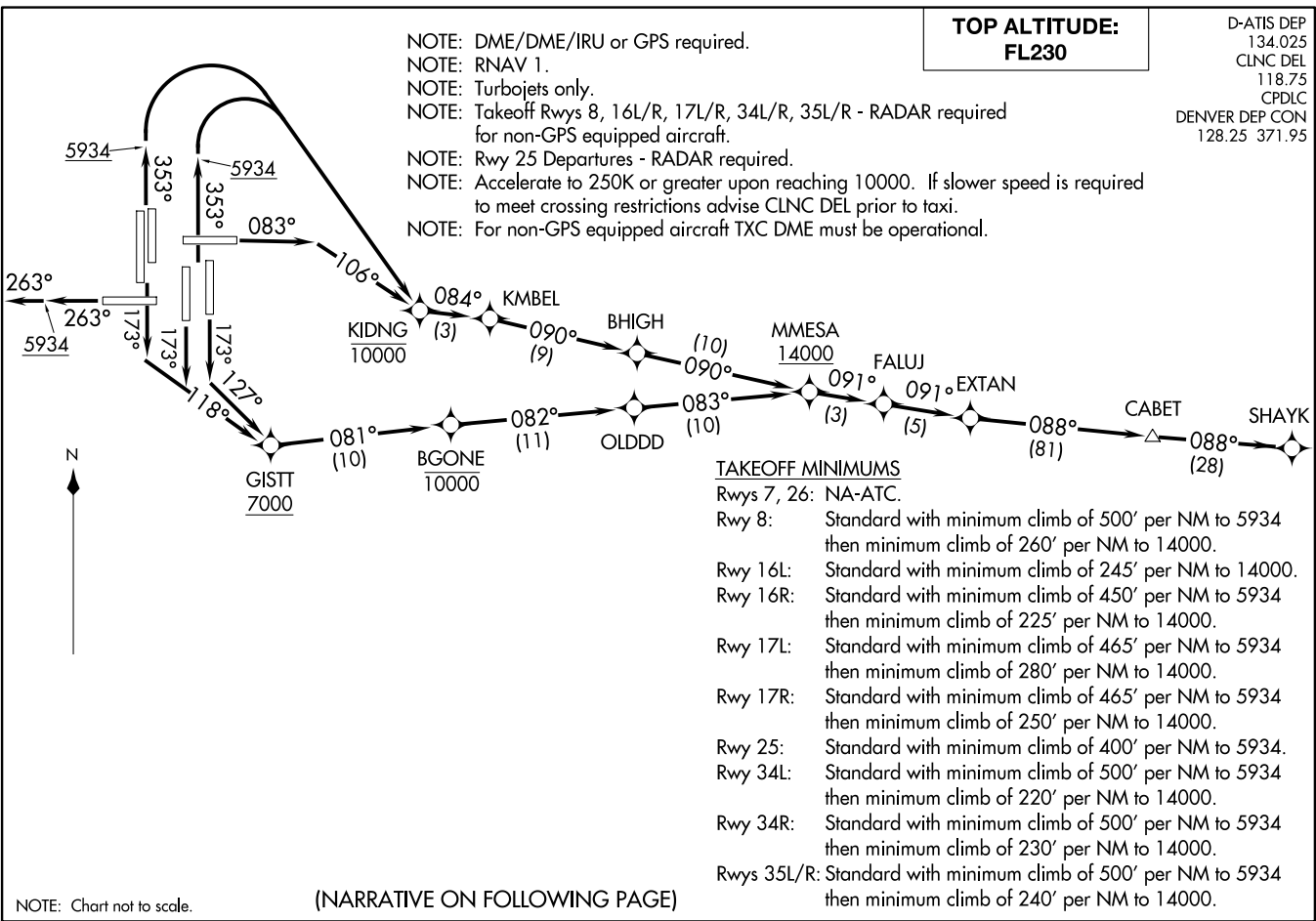


(EXTAN7.SHAYK) 17JUN21

EXTAN SEVEN DEPARTURE (RNAV)

DENVER, COLORADO
DENVER INTL (DEN)



(EXTAN7.SHAYK) 21168

EXTAN SEVEN DEPARTURE (RNAV)

AL-9077 (FAA)

DENVER INTL (DEN)
DENVER, COLORADO



DEPARTURE ROUTE DESCRIPTION

TAKEOFF RUNWAY 8: Climb on heading 083° to intercept course 106° to cross KIDNG at or below 10000, then on track 084° to KMBEL, then on track 090° to BHIGH, then on track 090° to cross MMESA at or above 14000, thence

TAKEOFF RUNWAYS 16L/R, 17R: Climb on heading 173° to intercept course 118° to cross GISTT at or above 7000, then on track 081° to cross BGONE at or below 10000, then on track 082° to OLDDD, then on track 083° to cross MMESA at or above 14000, thence

TAKEOFF RUNWAY 17L: Climb on heading 173° to intercept course 127° to cross GISTT at or above 7000, then on track 081° to cross BGONE at or below 10000, then on track 082° to OLDDD, then on track 083° to cross MMESA at or above 14000, thence

TAKEOFF RUNWAY 25: Climb on heading 263° to 5934, then continue climb on heading 263° or as assigned by ATC for RADAR vectors to EXTAN, thence

TAKEOFF RUNWAYS 34L/R, 35L/R: Climb on heading 353° to 5934, then climbing right turn direct to cross KIDNG at or below 10000, then on track 084° to KMBEL, then on track 090° to BHIGH, then on track 090° to cross MMESA at or above 14000, thence

. . . . on depicted route to SHAYK, maintain FL230 or filed lower altitude, expect higher filed altitude 10 minutes after departure.

SW-1, 20 FEB 2025 to 20 MAR 2025

SW-1, 20 FEB 2025 to 20 MAR 2025