

LOC/DME I-DXU 111.9 Chan 56	APP CRS 353°	Rwy Idg TDZE 5327 Apt Elev 5434
--	------------------------	---

ILS RWY 34L (SA CAT I)

DENVER INTL (DEN)

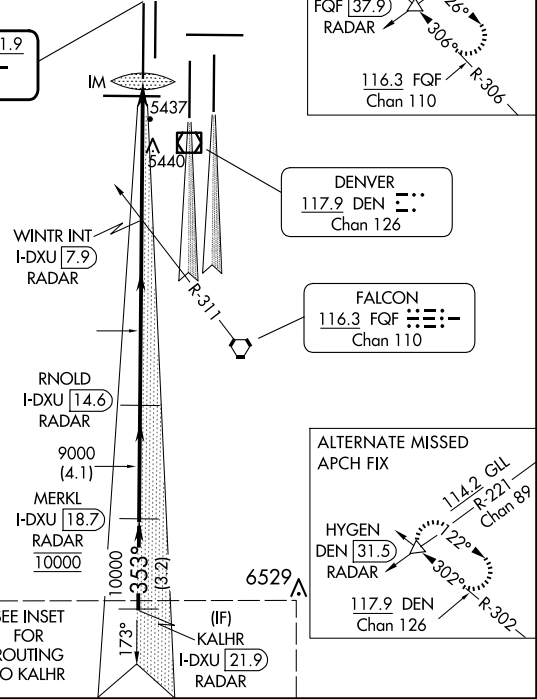
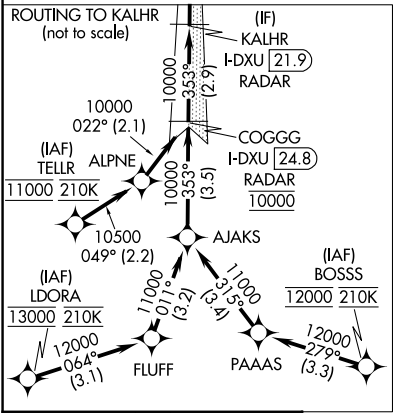
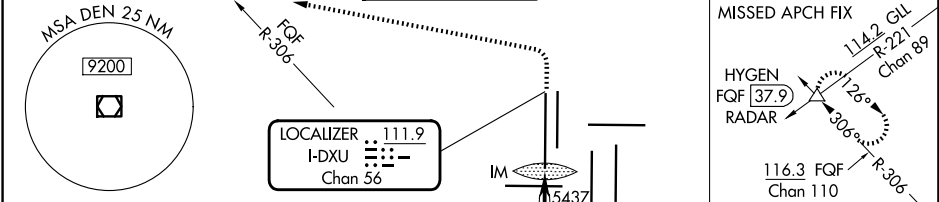
RNAV-1 GPS or RADAR required for procedure entry. From LDORA, BOSS, TELLR: RNAV-1 GPS required. DME or RADAR required.

Requires specific OPSPEC, MSPEC, or LOA approval.
Simultaneous approach authorized with Rwy 35L/R.

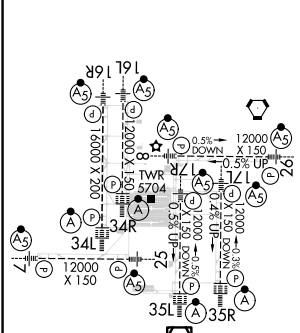
ALSF-2

MISSED APPROACH: Climb to 5800 then climbing left turn to 10000 on heading 270° and FQF VORTAC R-306 to HYGEN/FQF 37.9 DME/RADAR and hold.

D-ATIS 125.6 379.9 (ARR) 134.025 (DEP)	DENVER APP CON 119.3 307.3 (N) 120.35 379.3 (S)	DENVER TOWER 135.3 351.95	GND CON 121.35 379.175 (W) 121.85 377.1 (E)	CLNC DEL 118.75	CPDLC
--	---	-------------------------------------	---	---------------------------	-------



ELEV 5434	D	TDZE 5327
-----------	---	-----------



KALHR I-DXU 21.9 RADAR		MERKL I-DXU 18.7 RADAR	RNOLD I-DXU 14.6 RADAR	WINTR INT I-DXU 7.9 RADAR	5800	10000	FQF R-306	HYGEN
VGSi and ILS glidepath not coincident (VGSi Angle 3.00/TCH 70).					↑	hdg 270°	△	
10000 353°								
GS 3.00° TCH 50								
CATEGORY					A	B	C	D
S-ILS 34L					RA 148/14 150 DA 5477			

HIRL all Rwys
TDZ/CL Rwys 7, 16L, 16R, 17R, 26, 34L, 34R, 35L, 35R

SA CATEGORY I ILS - SPECIAL AIRCREW & AIRCRAFT CERTIFICATION REQUIRED

SW-1, 20 FEB 2025 to 20 MAR 2025

SW-1, 20 FEB 2025 to 20 MAR 2025