

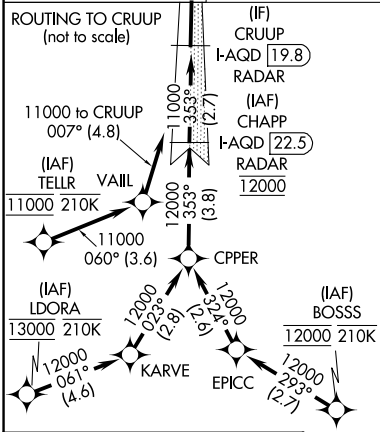
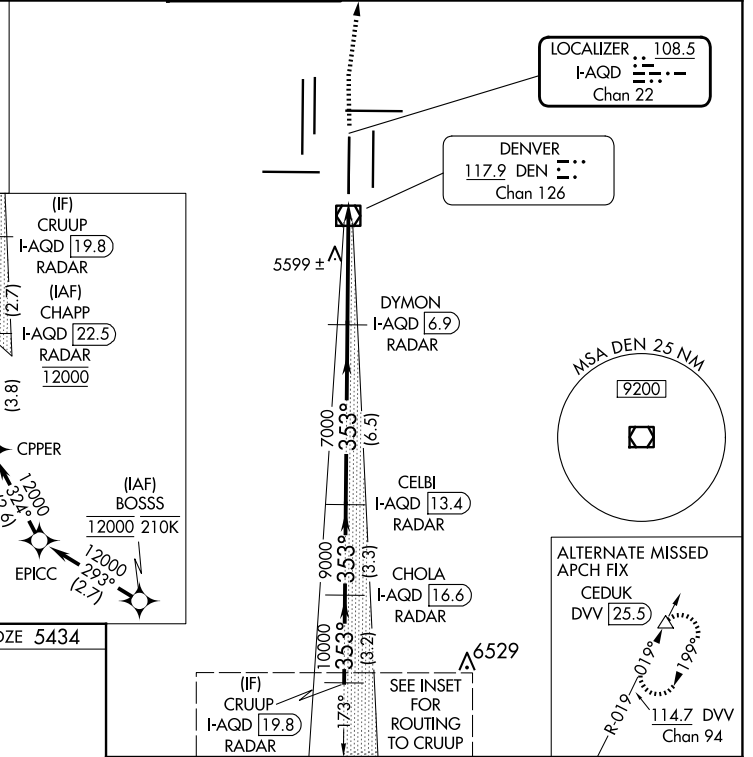
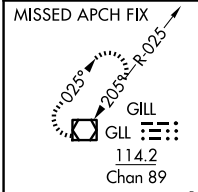
LOC/DME I-AQD 108.5 Chan 22	APP CRS 353°	Rwy Idg 12000 TDZE 5434 Apt Elev 5434
---	------------------------	--

ILS RWY 35L (SA CAT I)

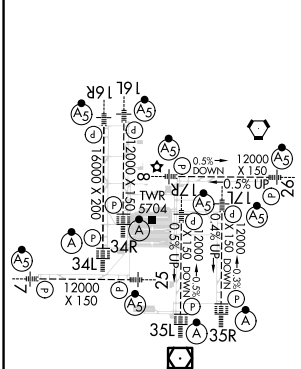
DENVER INTL (DEN)

RNAV 1-GPS or RADAR required for procedure entry.	ALS-F2 	MISSED APPROACH: Climb to 10000 then right turn direct GLL VOR/DME and hold.
<p>Simultaneous approach authorized. Requires specific OPSPEC, MSPEC, or LOA approval and use of HUD to DH.</p>		

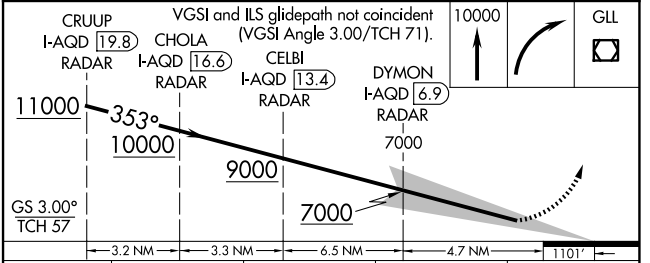
D-ATIS 125.6 379.9 (ARR) 134.025 (DEP)	DENVER APP CON 119.3 307.3 (N) 120.35 379.3 (S)	DENVER TOWER 124.3 322.45	GND CON 121.35 379.175 (W) 121.85 377.1 (E)	CLNC DEL 118.75	CPDLC
--	---	-------------------------------------	---	---------------------------	-------



ELEV 5434	D	TDZE 5434
-----------	----------	-----------



HIRL all Rwy
TDZ/CL Rwy 7, 16L, 16R, 17R, 26, 34L,
34R, 35L, 35R



CATEGORY	A	B	C	D
S-ILS 35L	RA 165/14 150 DA 5584			

SA CATEGORY I ILS - SPECIAL AIRCREW & AIRCRAFT CERTIFICATION REQUIRED

SW-1, 20 FEB 2025 to 20 MAR 2025

SW-1, 20 FEB 2025 to 20 MAR 2025