

| | | |
|---|------------------------|--|
| LOC/DME I-DQQ 111.9 Chan 56 | APP CRS 173° | Rwy Idg 16000 TDZE 5326 Apt Elev 5434 |
|---|------------------------|--|

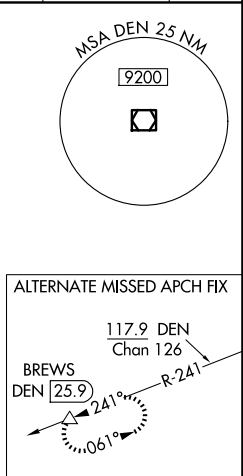
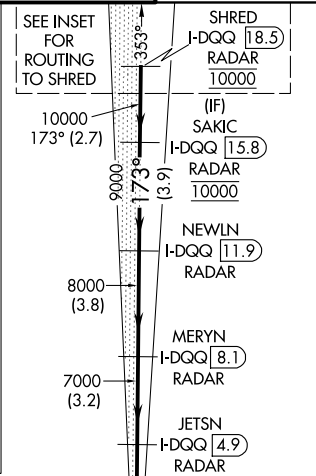
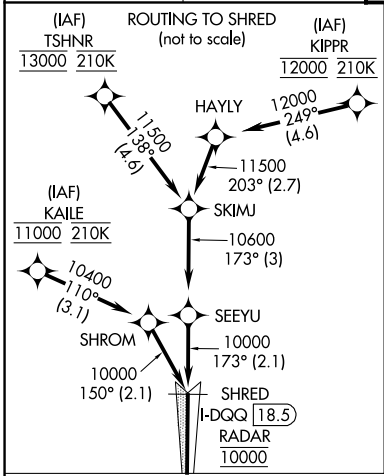
ILS or LOC RWY 16R

DENVER INTL (DEN)

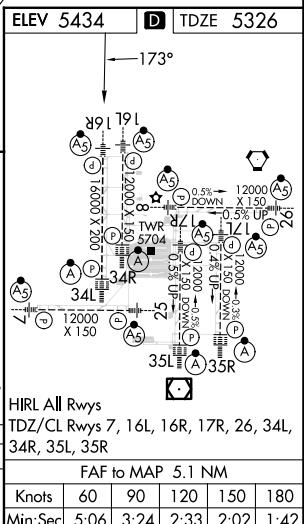
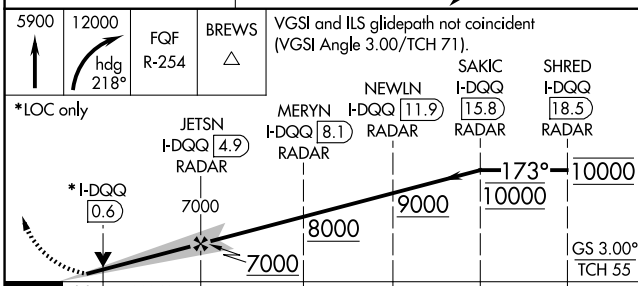
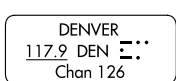
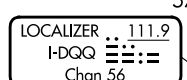
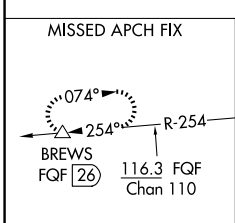
▼ For inoperative MALS/R, increase S-LOC Cat C/D visibility to RVR 4500. Simultaneous approach authorized with Rwy 17L and 17R. DME required.

MALS/R  MISSED APPROACH: Climb to 5900 then climbing right turn to 12000 on heading 218° and on FGF VORTAC R-254 to BREWS/FQF 26 DME and hold.

| | | | | | |
|--|---|-------------------------------------|---|---------------------------|-------|
| D-ATIS 125.6 379.9 (ARR) 134.025 (DEP) | DENVER APP CON 119.3 307.3 (N) 120.35 379.3 (S) | DENVER TOWER 135.3 351.95 | GND CON 121.35 379.175 (W) 121.85 377.1 (E) | CLNC DEL 118.75 | CPDLC |
|--|---|-------------------------------------|---|---------------------------|-------|



RADAR or GPS REQUIRED



| | | | | |
|-----------|---------------------|---|---|---|
| CATEGORY | A | B | C | D |
| S-ILS 16R | 5526/18 200 (100-½) | | | |
| S-LOC 16R | 5640/24 314 (300-½) | | | |

SW-1, 20 FEB 2025 to 20 MAR 2025

SW-1, 20 FEB 2025 to 20 MAR 2025