

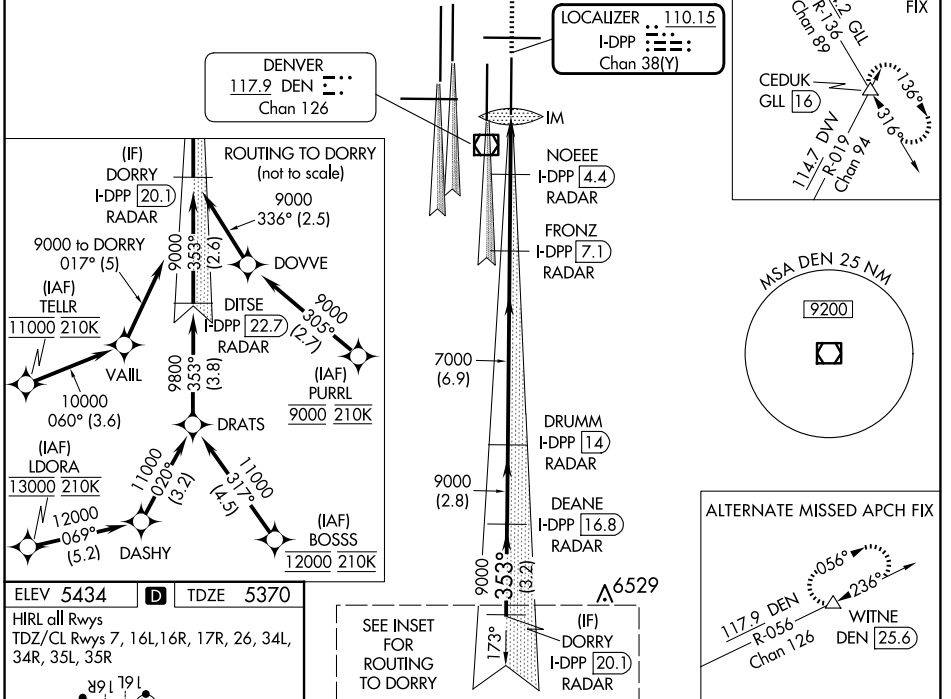
LOC/DME I-DPP 110.15 Chan 38(Y)	APP CRS 353°	Rwy Idg 12000 TDZE 5370 Apt Elev 5434
---	------------------------	--

ILS or LOC RWY 35R

DENVER INTL (DEN)

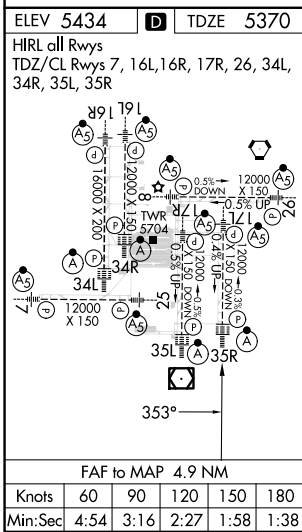
<p>▽ S-LOC 35R DME or RADAR required. Simultaneous approach authorized with Rwy 34L, Rwy 34R, and Rwy 35L.</p>	ALSF-2 (A)	MISSED APPROACH: Climb to 5800 then climbing right turn to 10000 on heading 048° and on GLL VORTAC R-136 to CEDUK/GLL 16 DME and hold.			
D-ATIS 125.6 379.9 (ARR) 134.025 (DEP)	DENVER APP CON 119.3 307.3 (N) 120.35 379.3 (S)	DENVER TOWER 132.35 239.275	GND CON 121.35 379.175 (W) 121.85 377.1 (E)	CLNC DEL 118.75	CPDLC

RADAR or GPS REQUIRED



SW-1, 20 FEB 2025 to 20 MAR 2025

SW-1, 20 FEB 2025 to 20 MAR 2025



VGSI and ILS glidepath not coincident (VGSI Angle 3.00/TCH 66).

DORRY I-DPP [20.1] RADAR	DEANE I-DPP [16.8] RADAR	DRUMM I-DPP [14] RADAR	FRONZ I-DPP [7.1] RADAR	NOEEE I-DPP [4.4] RADAR	IM I-DPP [2.2]
--------------------------	--------------------------	------------------------	-------------------------	-------------------------	----------------

5800 10000
↑ hdg 048°
R-136 GLL CEDUK

* LOC only

CATEGORY	A	B	C	D
S-ILS 35R	5570/18 200 (200-½)			
S-LOC 35R	5740/24	370 (400-½)	5740/35	370 (400-⅝)