

POWDR ONE ARRIVAL  
 (POWDR.POWDR1) 30JAN20

DENVER APP CON  
 120.35 379.3  
 APA ATIS  
 120.3  
 BJC ATIS  
 126.25  
 CFO ATIS  
 119.025  
 DEN D-ATIS ARR  
 125.6 379.9  
 KBKF ATIS\*  
 119.675 259.3

DENVER, COLORADO

SW-1, 20 FEB 2025 to 20 MAR 2025

GILL  
 114.2 GLL  
 Chan 89

NORTHERN  
 COLORADO  
 RGNL

GREELEY-WELD  
 COUNTY

MILE HIGH  
 114.7 DVV  
 Chan 94

ROCKY MOUNTAIN  
 METRO

DENVER  
 117.9 DEN  
 Chan 126

DENVER INTL

COLORADO AIR AND  
 SPACE PORT

BUCKLEY SPACE  
 FORCE  
 BASE

FALCON  
 116.3 FGF  
 Chan 110

CENTENNIAL

**POWDR  
 VERTICAL NAVIGATION  
 PLANNING INFORMATION**

TURBOJETS: Expect FL190 250K  
 or as assigned by ATC.

KREMMLING  
 113.8 RLG  
 Chan 85

RED TABLE  
 113.0 DBL  
 Chan 77

GRAND JUNCTION  
 112.4 JNC  
 Chan 71

BLUE MESA  
 114.9 HBU  
 Chan 96



NOTE: DME required.  
 NOTE: Adjacent STAR is LARKS ARRIVAL.  
 NOTE: Chart not to scale.

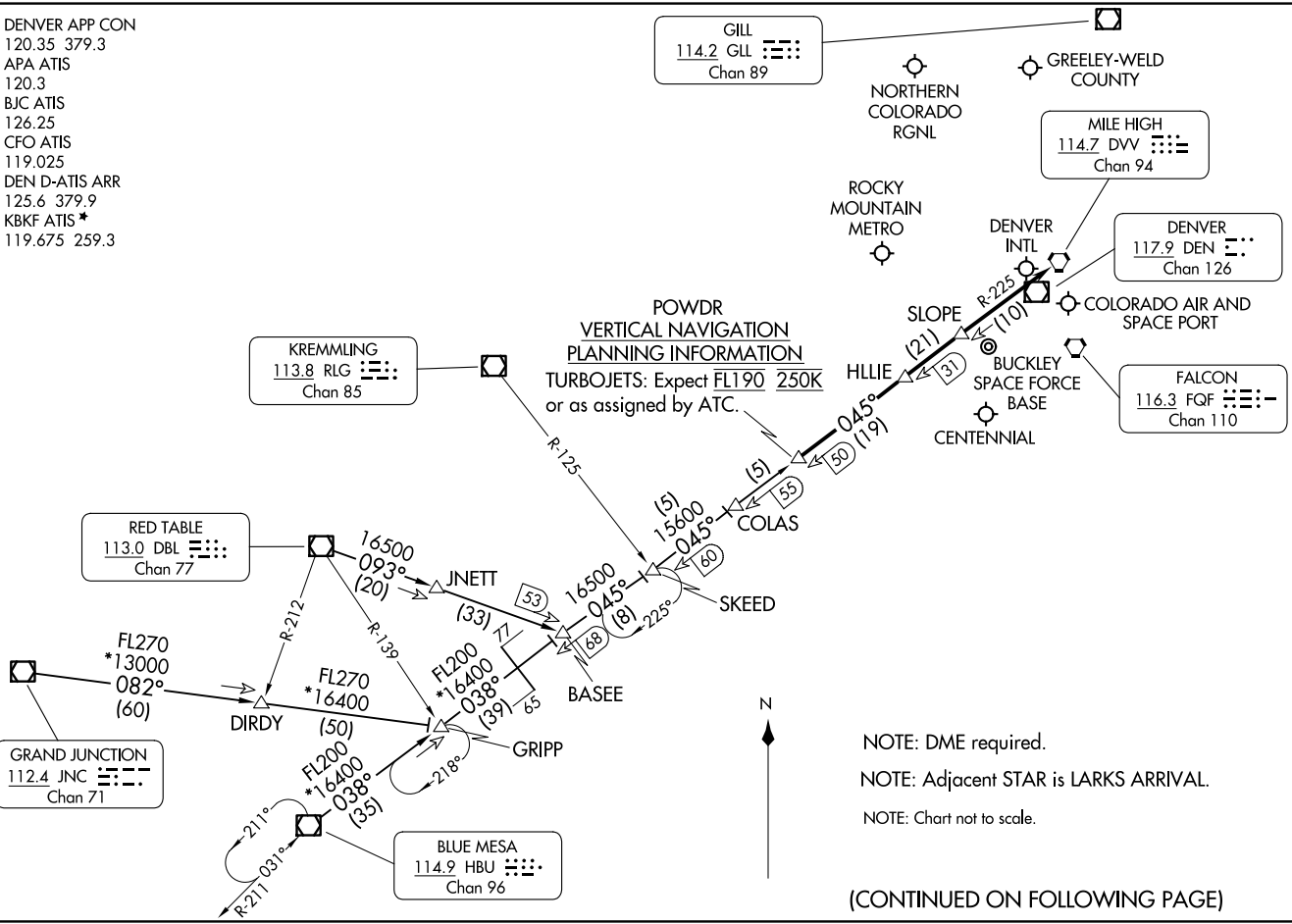
(CONTINUED ON FOLLOWING PAGE)

(POWDR.POWDR1) 23334  
 POWDR ONE ARRIVAL

AL-9077 (FAA)

DENVER, COLORADO

SW-1, 20 FEB 2025 to 20 MAR 2025



ARRIVAL ROUTE DESCRIPTION

BLUE MESA TRANSITION (HBU.POWDR1): From over HBU VOR/DME on HBU R-038 to GRIPP then on HBU R-038 and DVV R-225 to BASEE then on DVV R-225 to POWDR. Thence. . . .

GRAND JUNCTION TRANSITION (JNC.POWDR1): From over JNC VOR/DME on JNC R-082 to GRIPP; then on HBU R-038 and DVV R-225 to BASEE then on DVV R-225 to POWDR. Thence. . . .

RED TABLE TRANSITION (DBL.POWDR1): From over DBL VOR/DME on DBL R-093 and DVV R-225 to POWDR. Thence. . . .

. . . .from over POWDR on the DVV VORTAC R-225 to HLLIE, then on DVV VORTAC R-225 to SLOPE, then on DVV VORTAC R-225 to DVV. Expect RADAR vectors to the final approach course at or before DVV VORTAC.

SW-1, 20 FEB 2025 to 20 MAR 2025

SW-1, 20 FEB 2025 to 20 MAR 2025