


APP CRS <b>173°</b>	Rwy Idg <b>12000</b>
	TDZE <b>5357</b>
	Apt Elev <b>5434</b>

# RNAV (RNP) Z RWY 16L

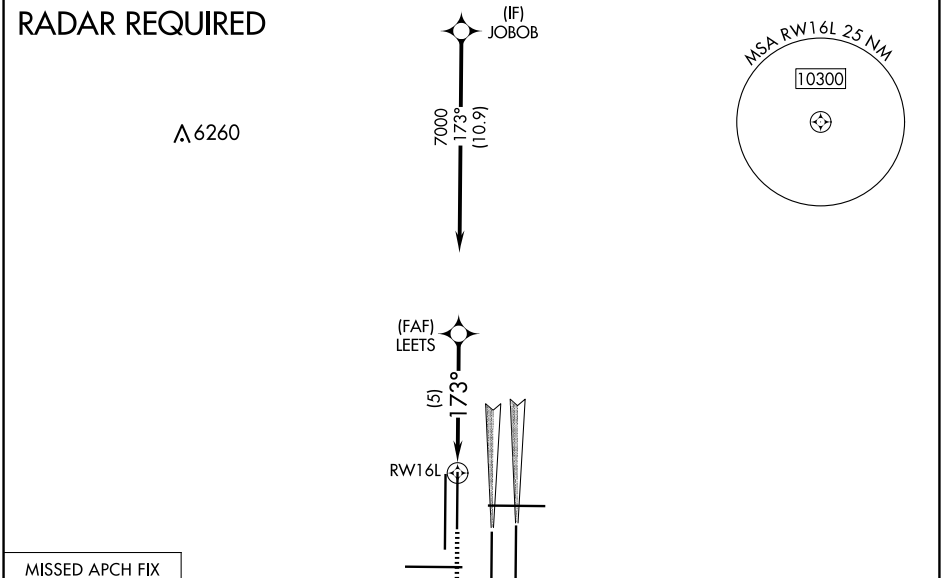
DENVER INTL (DEN)



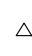
▼ For uncompensated Baro-VNAV systems, procedure NA below -25°C (-13°F) or above 45°C (114°F). GPS required. For inoperative MALSR, increase RNP 0.10 all Cats visibility to RVR 4000 and RNP 0.30 all Cats visibility to RVR 5000. Simultaneous approach authorized. Use of FD or AP providing RNAV track guidance required during simultaneous operations.

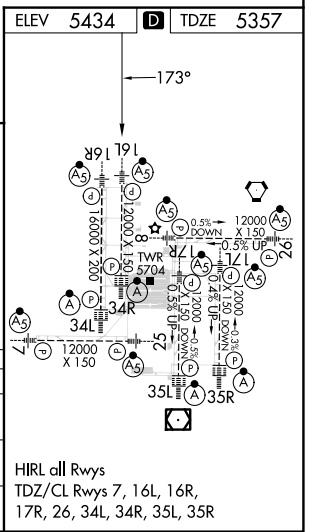
MALSR 

MISSED APPROACH: Climb to 5900 then climbing right turn to 10000 direct BINBE and hold, continue climb-in-hold to 10000.

D-ATIS <b>125.6 379.9 (ARR)</b> <b>134.025 (DEP)</b>	DENVER APP CON <b>119.3 307.3 (N)</b> <b>120.35 379.3 (S)</b>	DENVER TOWER <b>135.3 351.95</b>	GND CON <b>121.35 379.175 (W)</b> <b>121.85 377.1 (E)</b>	CLNC DEL <b>118.75</b>	CPDLC
--	---	-------------------------------------	---	---------------------------	-------



5900	10000	BINBE	VGSi and RNAV glidepath not coincident (VGSi Angle 3.00/TCH 71).			
			LEETS			
			7000			
			7000			
			GP 3.00°			
			TCH 60			
			5 NM			
CATEGORY	A	B	C	D		
RNP 0.10 DA	5617/24		260 (200-½)			
RNP 0.30 DA	5683/32		326 (300-¾)			
<b>AUTHORIZATION REQUIRED</b>						



SW-1, 20 FEB 2025 to 20 MAR 2025

SW-1, 20 FEB 2025 to 20 MAR 2025