


RNAV (RNP) Z RWY 16R

DENVER INTL (DEN)

APP CRS 170°	Rwy Idg 16000 TDZE 5326 Apt Elev 5434
------------------------	--

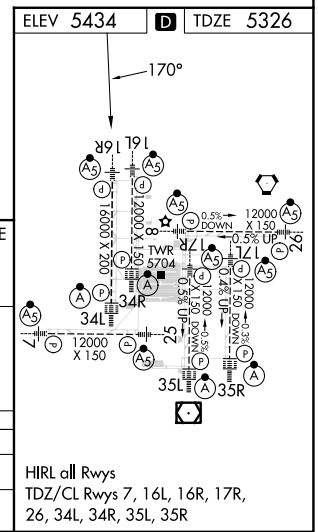
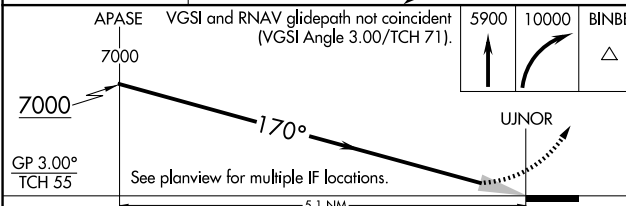
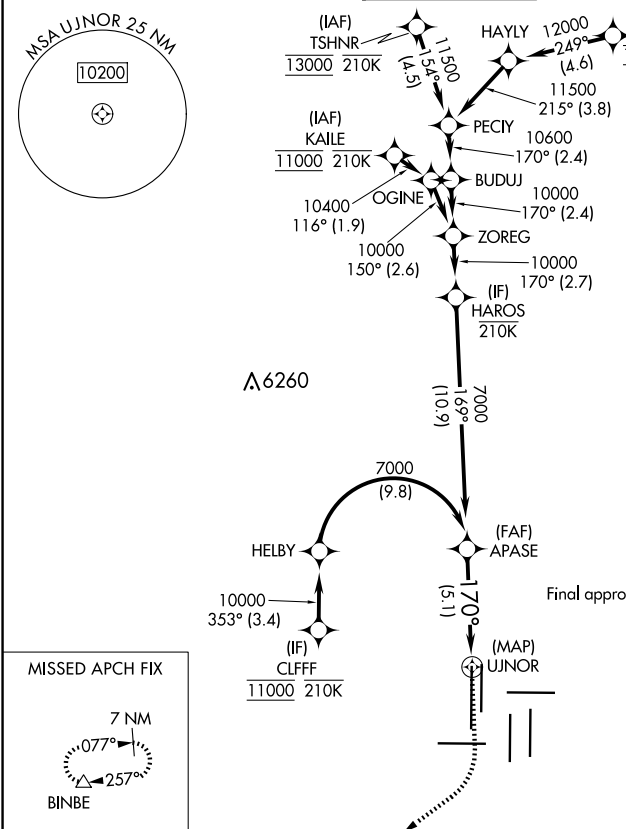
RNP AR APCH - GPS.

Simultaneous approach authorized. For uncompensated Baro-VNAV systems, procedure NA below -24°C or above 54°C. For inop ALS, increase RNP 0.30 all Cats visibility to RVR 4500.

MALSR 

MISSED APPROACH: Climb to 5900 then climbing right turn to 10000 direct BINBE and hold, continue climb-in-hold to 10000.

D-ATIS 125.6 379.9 (ARR) 134.025 (DEP)	DENVER APP CON 119.3 307.3 (N) 120.35 379.3 (S)	DENVER TOWER 135.3 351.95	GND CON 121.35 379.175 (W) 121.85 377.1 (E)	CLNC DEL 118.75	CPDLC
--	---	-------------------------------------	---	---------------------------	-------



CATEGORY	A	B	C	D
RNP 0.30 DA	5596/24 270 (200-1/2)			

AUTHORIZATION REQUIRED

SW-1, 20 FEB 2025 to 20 MAR 2025

SW-1, 20 FEB 2025 to 20 MAR 2025