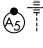


APP CRS 173°	Rwy Idg 12000 TDZE 5392 Apt Elev 5434
------------------------	--

RNAV (RNP) Z RWY 17R

DENVER INTL (DEN)

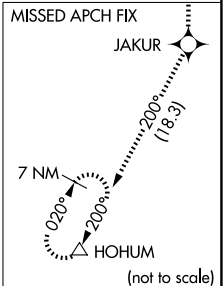
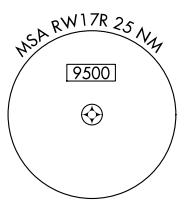
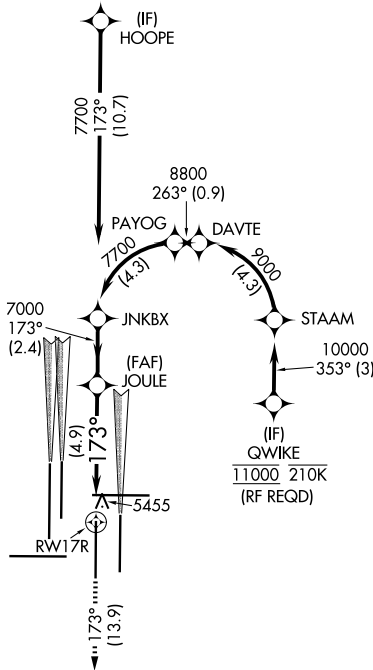
▽ GPS required. For inoperative MALSR, increase RNP 0.10 all Cats visibility to RVR 5000 and RNP 0.30 all Cats visibility to 1 $\frac{1}{2}$ mile. Simultaneous approach authorized. Use of FD or AP providing RNAV track guidance required during simultaneous operations. For uncompensated Baro-VNAV systems, procedure NA below -25°C (-13°F) or above 45°C (114°F).

MALSR

MISSED APPROACH: Climb to 10000 on track 173° to JAKUR and on track 200° to HOHUM and hold.

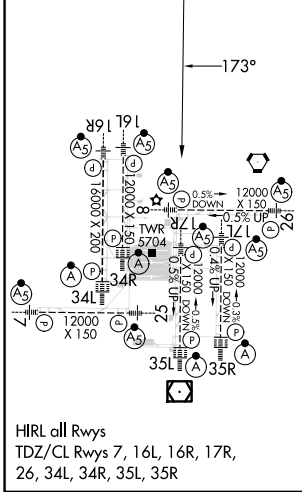
D-ATIS 125.6 379.9 (ARR) 134.025 (DEP)	DENVER APP CON 119.3 307.3 (N) 120.35 379.3 (S)	DENVER TOWER 124.3 322.45	GND CON 121.35 379.175 (W) 121.85 377.1 (E)	CLNC DEL 118.75	CPDLC
--	---	-------------------------------------	---	---------------------------	-------

RADAR REQUIRED

A 6260



ELEV 5434	D	TDZE 5392
-----------	----------	-----------



HIRL all Rwys
 TDZ/CL Rwys 7, 16L, 16R, 17R,
 26, 34L, 34R, 35L, 35R

10000 tr 173°	JAKUR	tr 200°	HOHUM	VGSI and RNAV glidepath not coincident (VGSI Angle 3.00°/TCH 69°).	JNKBX
See planview for multiple IF locations.					
RWY 17R		JOULE 7000	7700	173°	7000
4.9 NM		2.4 NM		GP 3.00°	TCH 60
CATEGORY	A	B	C	D	
RNP 0.10 DA	5722/32 330 (300- $\frac{5}{8}$)				
RNP 0.30 DA	5894/60 502 (500-1 $\frac{1}{4}$)				

AUTHORIZATION REQUIRED

SW-1, 20 FEB 2025 to 20 MAR 2025

SW-1, 20 FEB 2025 to 20 MAR 2025