


APP CRS 353°	Rwy Idg 16000
	TDZE 5327
	Apt Elev 5434

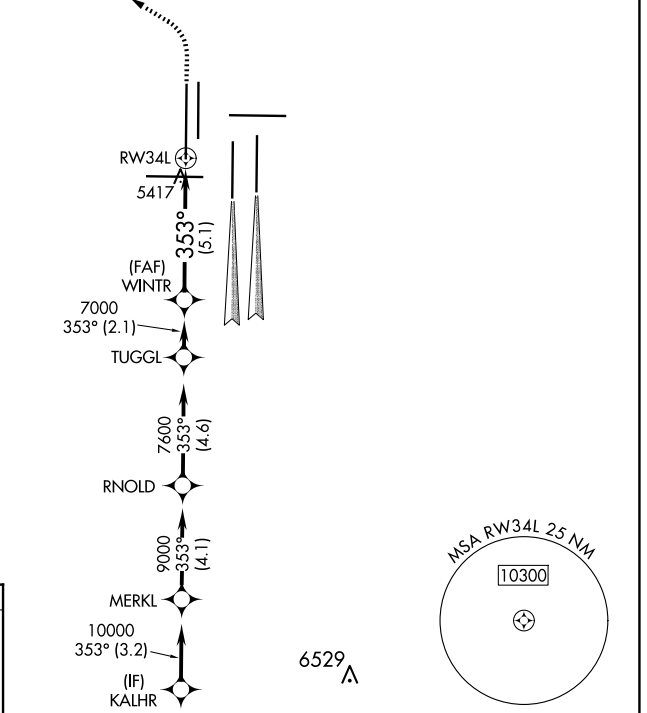
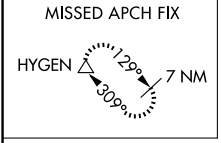
RNAV (RNP) Z RWY 34L

DENVER INTL (DEN)

▼ For uncompensated Baro-VNAV systems, procedure NA below -25°C (-13°F) or above 48°C (118°F). GPS required. For inoperative ALSF, increase RNP 0.10 all Cats visibility to RVR 4500 and RNP 0.20 all Cats visibility to RVR 6000 and RNP 0.30 all Cats visibility to 1½ mile. Simultaneous approach authorized. Use of FD or AP providing RNAV track guidance required during simultaneous operations.

ALSF-2 
 MISSED APPROACH: Climb to 5900 then climbing left turn to 10000 direct HYGEM and hold.

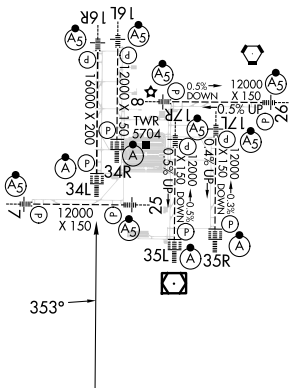
D-ATIS 125.6 379.9 (ARR) 134.025 (DEP)	DENVER APP CON 119.3 307.3 (N) 120.35 379.3 (S)	DENVER TOWER 135.3 351.95	GND CON 121.35 379.175 (W) 121.85 377.1 (E)	CLNC DEL 118.75	CPDLC
------------------------------------------------------------	---------------------------------------------------------------------	-------------------------------------	-----------------------------------------------------------------	---------------------------	-------




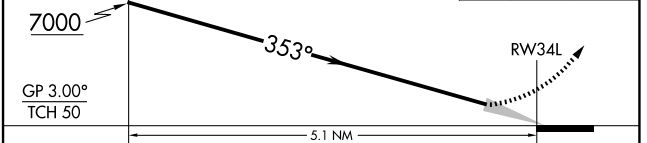
RADAR REQUIRED

ELEV 5434 **D** TDZE 5327

HIRL all Rwys
 TDZ/CL Rwys 7, 16L, 16R, 17R,
 26, 34L, 34R, 35L, 35R



WINTR VGSi and RNAV glidepath not coincident (VGSi Angle 3.00/TCH 70).
 5900 10000 HYGEM




GP 3.00° TCH 50	5.1 NM			
CATEGORY	A	B	C	D
RNP 0.10 DA		5587/24	260 (200-½)	
RNP 0.20 DA		5720/45	393 (300-¾)	
RNP 0.30 DA		5782/60	455 (400-1¼)	

AUTHORIZATION REQUIRED

SW-1, 20 FEB 2025 to 20 MAR 2025

SW-1, 20 FEB 2025 to 20 MAR 2025