

APP CRS <b>353°</b>	Rwy Idg TDZE Apt Elev	<b>12000</b> <b>5434</b> <b>5434</b>
------------------------	-----------------------------	--

# RNAV (RNP) Z RWY 35L

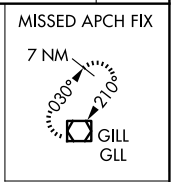
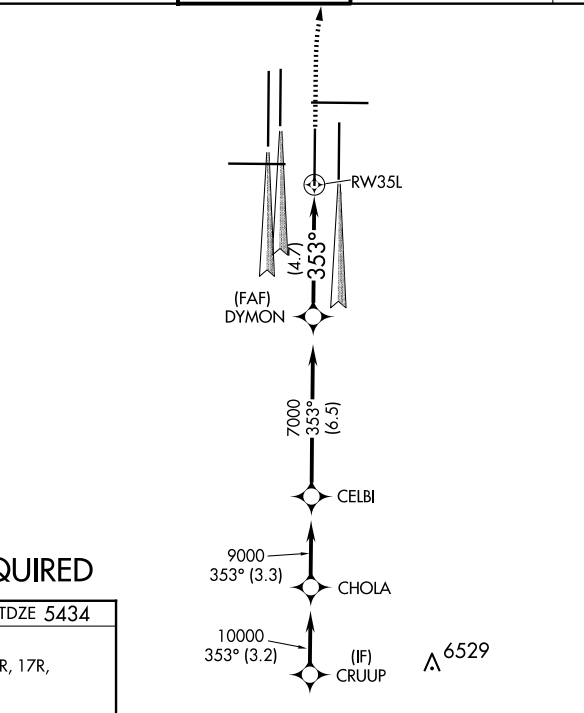
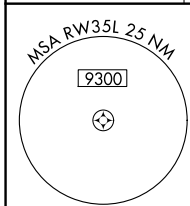
DENVER INTL (DEN)

**▽** For uncompensated Baro-VNAV systems, procedure NA below -25°C (-13°F) or above 46°C (115°F). GPS required. For inoperative ALSF, increase RNP 0.10 all Cats visibility to RVR 4500 and RNP 0.30 all Cats visibility to RVR 5000. Simultaneous approach authorized. Use of FD or AP providing RNAV track guidance required during simultaneous operations.

ALSF-2

MISSED APPROACH: Climb to 10000, then right turn direct GLL VOR/DME and hold.

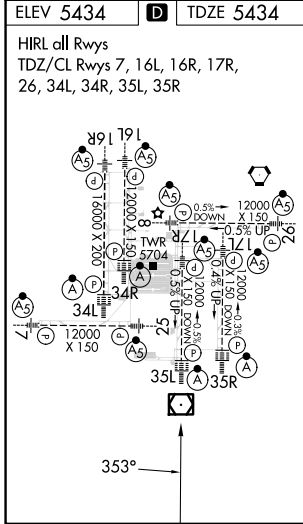
D-ATIS <b>125.6 379.9</b> (ARR) <b>134.025</b> (DEP)	DENVER APP CON <b>119.3 307.3</b> (N) <b>120.35 379.3</b> (S)	DENVER TOWER <b>124.3 322.45</b>	GND CON <b>121.35 379.175</b> (W) <b>121.85 377.1</b> (E)	CLNC DEL <b>118.75</b>	CPDLC
--	---	-------------------------------------	---	---------------------------	-------



**RADAR REQUIRED**

ELEV 5434 **D** TDZE 5434

HIRL all Rwys  
TDZ/CL Rwys 7, 16L, 16R, 17R,  
26, 34L, 34R, 35L, 35R



DYMON	7000	10000	GLL
VGSi and RNAV glidepath not coincident (VGSi Angle 3.00/TCH 71).			
7000	353°	RW35L	
GP 3.00°	TCH 57	4.7 NM	
CATEGORY	A	B	C
RNP 0.10 DA		5695/24	261 (300-1/2)
RNP 0.30 DA		5760/32	326 (400-5/8)
<b>AUTHORIZATION REQUIRED</b>			

SW-1, 20 FEB 2025 to 20 MAR 2025

SW-1, 20 FEB 2025 to 20 MAR 2025