

RNAV (RNP) Z RWY 35R

DENVER INTL (DEN)

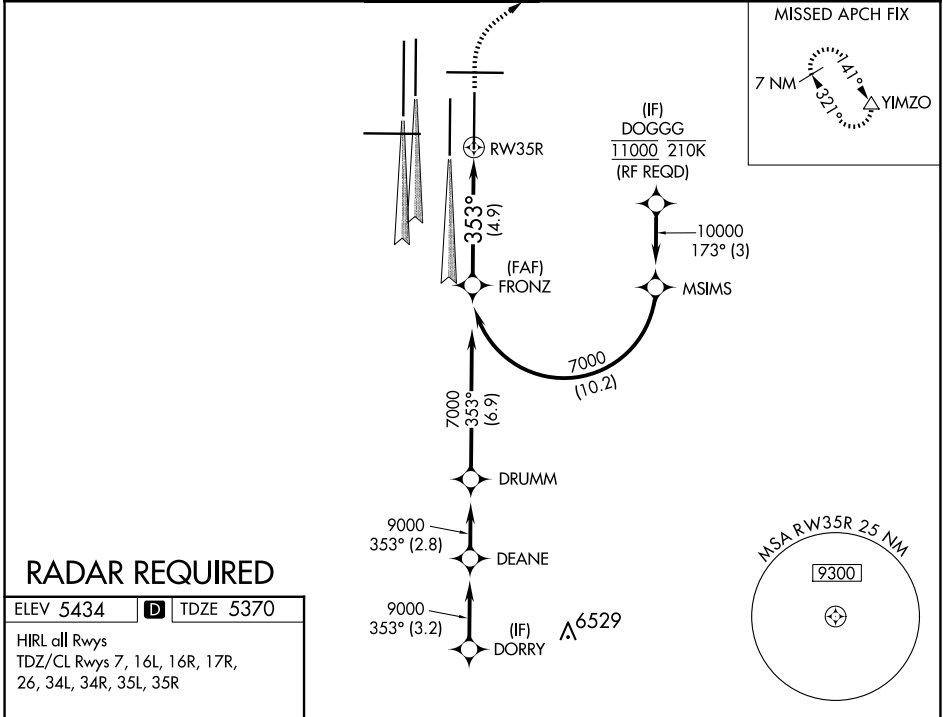
APP CRS 353°	Rwy Idg 12000 TDZE 5370 Apt Elev 5434
------------------------	--

▽ For uncompensated Baro-VNAV systems, procedure NA below -25°C (-13°F) or above 45°C (114°F). GPS required. For inoperative ALSF, increase RNP 0.10 all Cats visibility to RVR 4500 and RNP 0.30 all Cats visibility to RVR 5000. Simultaneous approach authorized. Use of FD or AP providing RNAV track guidance required during simultaneous operations.

ALSF-2

MISSED APPROACH: Climb to 5900, then climbing right turn to 8000 direct YIMZO and hold.

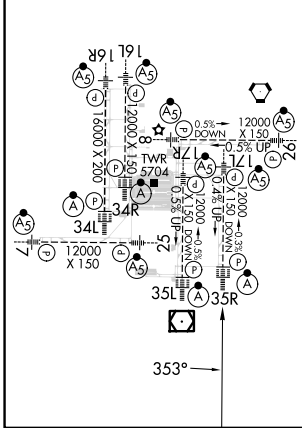
D-ATIS 125.6 379.9 (ARR) 134.025 (DEP)	DENVER APP CON 119.3 307.3 (N) 120.35 379.3 (S)	DENVER TOWER 132.35 239.275	GND CON 121.35 379.175 (W) 121.85 377.1 (E)	CLNC DEL 118.75	CPDLC
--	---	---------------------------------------	---	---------------------------	-------



RADAR REQUIRED

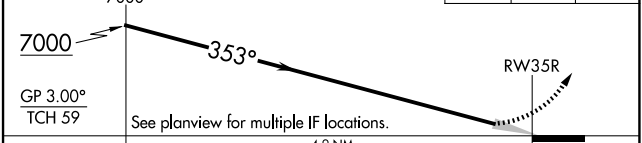
ELEV 5434	D	TDZE 5370
-----------	----------	-----------

HIRL all Rwys
TDZ/CL Rwys 7, 16L, 16R, 17R,
26, 34L, 34R, 35L, 35R



VGSI and RNAV glidepath not coincident (VGSI Angle 3.00/TCH 66).

5900	8000	YIMZO



CATEGORY	A	B	C	D
RNP 0.10 DA		5631/24	261 (200-1/2)	
RNP 0.30 DA		5702/32	332 (300-5/8)	

AUTHORIZATION REQUIRED

SW-1, 20 FEB 2025 to 20 MAR 2025

SW-1, 20 FEB 2025 to 20 MAR 2025