

DENVER, COLORADO

AL-9077 (FAA)

24361

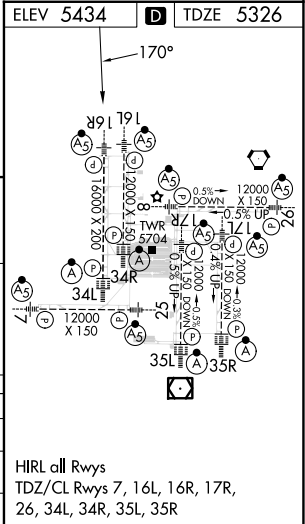
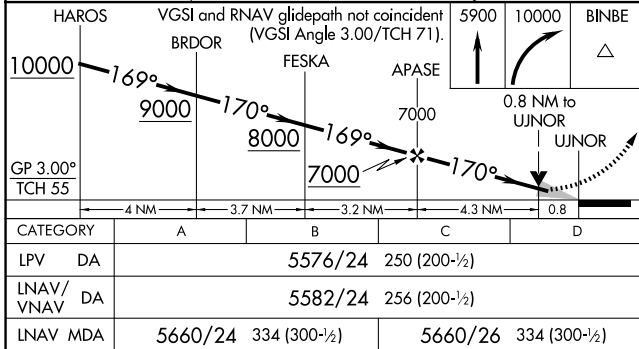
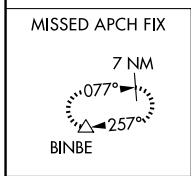
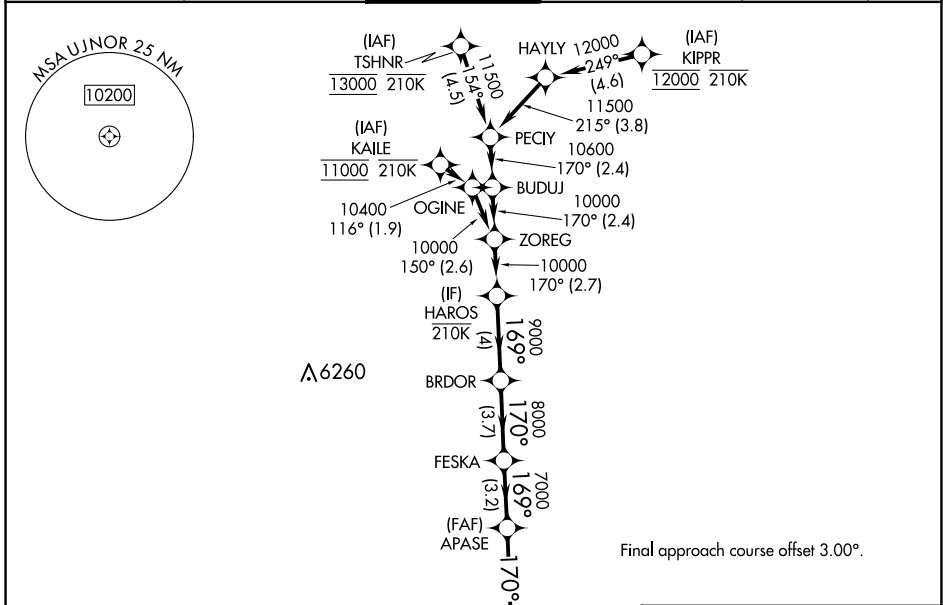
WAAS CH 53546 W16B	APP CRS 170°	Rwyl Idg 16000
	TDZE 5326	
	Apt Elev 5434	

RNAV (GPS) Y RWY 16R

DENVER INTL (DEN)

RNP APCH - GPS.	MALSR	MISSED APPROACH: Climb to 5900, then climbing right turn to 10000 direct BINBE and hold, continue climb-in-hold to 10000.
<p>▼ LNAV procedure NA during simultaneous operations. For uncompensated Baro-VNAV systems, LNAV/VNAV NA below -24°C or above 54°C. Use of FD or AP required during simultaneous operations. For inop ALS, increase LNAV/VNAV all Cats visibility to RVR 4000. Simultaneous approach authorized.</p>		

D-ATIS 125.6 379.9 (ARR) 134.025 (DEP)	DENVER APP CON 119.3 307.3 (N) 120.35 379.3 (S)	DENVER TOWER 135.3 351.95	GND CON 121.35 379.175 (W) 121.85 377.1 (E)	CLNC DEL 118.75	CPDLC
--	---	-------------------------------------	---	---------------------------	-------



DENVER, COLORADO
Amtd 1 21MAR24

39°52'N-104°40'W

RNAV (GPS) Y RWY 16R

DENVER INTL (DEN)

HIRL all Rwws
TDZ/CL Rwws 7, 16L, 16R, 17R,
26, 34L, 34R, 35L, 35R

SW-1, 20 FEB 2025 to 20 MAR 2025

SW-1, 20 FEB 2025 to 20 MAR 2025