

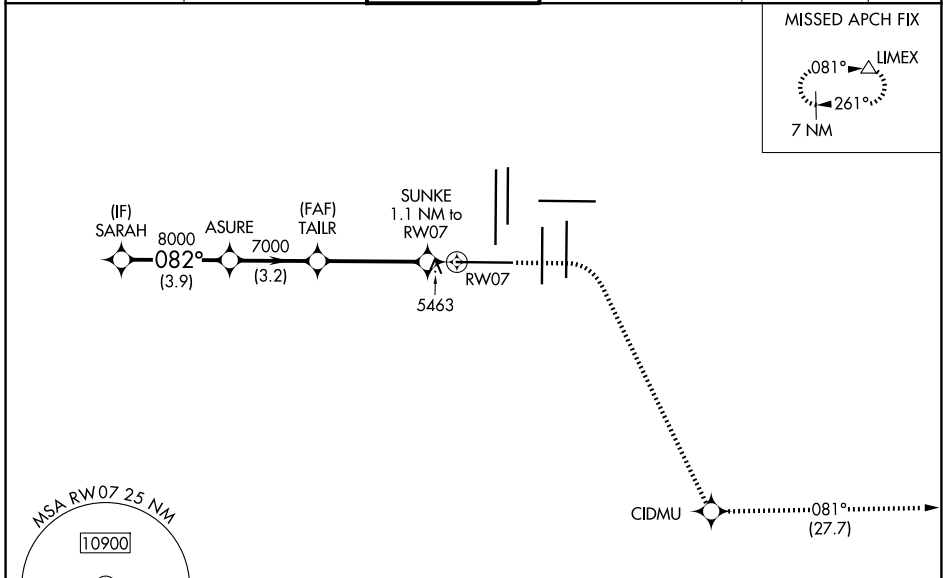
| | | |
|--|------------------------|--|
| WAAS CH 87128 W07A | APP CRS 082° | Rwy Idg 12000 TDZE 5352 Apt Elev 5434 |
|--|------------------------|--|

RNAV (GPS) Y RWY 7

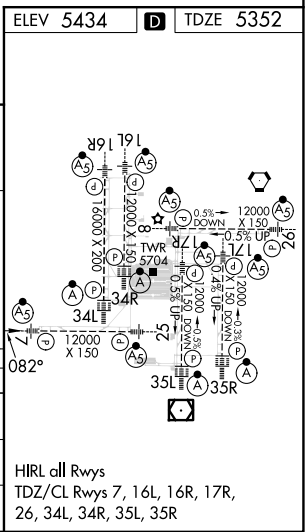
DENVER INTL (DEN)

| | | |
|---|--------|--|
| RNP APCH - GPS. | MALSRL | MISSED APPROACH: Climb to 5900 then climbing right turn to 10000 direct CIDMU and on track 081° to LIMEX and hold. |
| <p>Simultaneous approach authorized. For uncompensated Baro-VNAV systems, LNAV/VNAV NA below -22°C or above 54°C. LNAV procedure NA during simultaneous operations. For inop ALS, increase LNAV/VNAV all Cats visibility to RVR 4500, and LNAV Cat C/D visibility to RVR 5500. Use of FD or AP required during simultaneous operations.</p> | | |

| | | | | | |
|--|---|--------------------------------------|---|---------------------------|-------|
| D-ATIS 125.6 379.9 (ARR) 134.025 (DEP) | DENVER APP CON 119.3 307.3 (N) 120.35 379.3 (S) | DENVER TOWER 128.75 273.55 | GND CON 121.35 379.175 (W) 121.85 377.1 (E) | CLNC DEL 118.75 | CPDLC |
|--|---|--------------------------------------|---|---------------------------|-------|



| | | | | |
|--|---------|---|-------------|-------------|
| <p>VGSI and RNAV glidepath not coincident (VGSI Angle 3.00/TCH 68).</p> <p>SARAH 9000 → ASURE 8000 → TAILR 7000 → SUNKE 1.1 NM to RWY07 (5740) → RWY07</p> <p>GP 3.00° TCH 55</p> <p>Distances: 3.9 NM, 3.2 NM, 4 NM, 1.1 NM</p> | | <p>5900</p> <p>10000</p> <p>CIDMU</p> <p>LIMEX</p> <p>tr 081°</p> | | |
| CATEGORY | A | B | C | D |
| LPV DA | 5552/18 | | 200 (200-½) | |
| LNAV/VNAV DA | 5626/24 | | 274 (200-½) | |
| LNAV MDA | 5720/24 | 368 (300-½) | 5720/35 | 368 (300-¾) |



SW-1, 20 FEB 2025 to 20 MAR 2025

SW-1, 20 FEB 2025 to 20 MAR 2025