

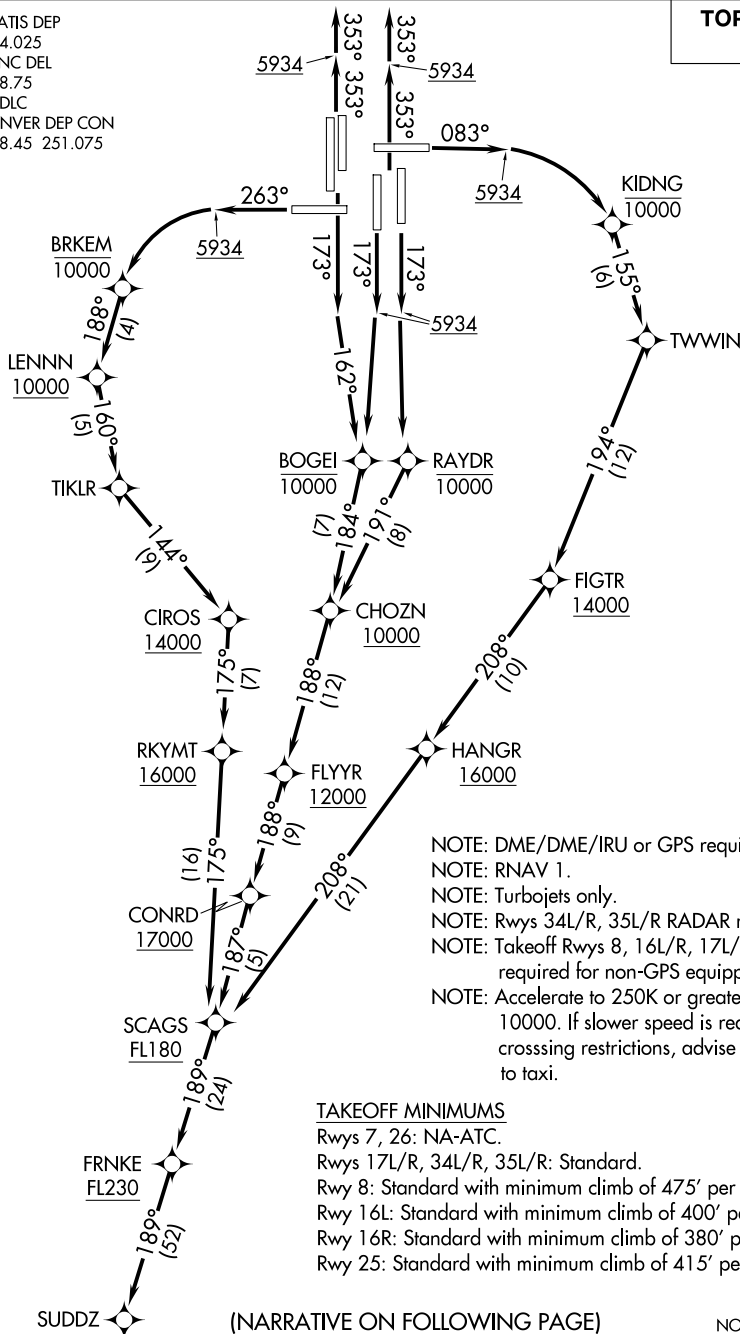
SUDDZ ONE DEPARTURE (RNAV)

AL-9077 (FAA)

DENVER INTL (DEN)
DENVER, COLORADO

**TOP ALTITUDE:
FL230**

D-ATIS DEP
134.025
CLNC DEL
118.75
CPDLC
DENVER DEP CON
128.45 251.075



NOTE: DME/DME/IRU or GPS required.
 NOTE: RNAV 1.
 NOTE: Turbojets only.
 NOTE: Rws 34L/R, 35L/R RADAR required.
 NOTE: Takeoff Rws 9, 16L/R, 17L/R, 25, RADAR required for non-GPS equipped aircraft.
 NOTE: Accelerate to 250K or greater upon reaching 10000. If slower speed is required to meet crossing restrictions, advise CLNC DEL prior to taxi.

TAKEOFF MINIMUMS

Rws 7, 26: NA-ATC.
 Rws 17L/R, 34L/R, 35L/R: Standard.
 Rwy 8: Standard with minimum climb of 475' per NM to 5934.
 Rwy 16L: Standard with minimum climb of 400' per NM to 5934.
 Rwy 16R: Standard with minimum climb of 380' per NM to 5934.
 Rwy 25: Standard with minimum climb of 415' per NM to 5934.

(NARRATIVE ON FOLLOWING PAGE)

NOTE: Chart not to scale.

SUDDZ ONE DEPARTURE (RNAV)

SW-1, 20 FEB 2025 to 20 MAR 2025

SW-1, 20 FEB 2025 to 20 MAR 2025



DEPARTURE ROUTE DESCRIPTION
SEE ADDITIONAL REQUIREMENTS ON AAUP

TAKEOFF RUNWAY 8: Climb on heading 083° to 5934, then right turn direct KIDNG at or below 10000, then on track 155° to TWWIN, then on track 194° to cross FIGTR at or above 14000, then on track 208° to cross HANGR at or above 16000, then on track 208° to cross SCAGS at or above FL180, thence

TAKEOFF RUNWAYS 16L/R: Climb on heading 173° to intercept course 162° to cross BOGEI at or below 10000, then on track 184° to cross CHOZN at or above 10000, then on track 188° to cross FLYYR at or above 12000, then on track 188° to cross CONRD at or above 17000, then on track 187° to cross SCAGS at or above FL180, thence

TAKEOFF RUNWAY 17L: Climb on heading 173° to 5934, then direct RAYDR at or below 10000, then on track 191° to cross CHOZN at or above 10000, then on track 188° to cross FLYYR at or above 12000, then on track 188° to cross CONRD at or above 17000, then on track 187° to cross SCAGS at or above FL180, thence

TAKEOFF RUNWAY 17R: Climb on heading 173° to 5934, then direct BOGEI at or below 10000, then on track 184° to cross CHOZN at or above 10000, then on track 188° to cross FLYYR at or above 12000, then on track 188° to cross CONRD at or above 17000, then on track 187° to cross SCAGS at or above FL180, thence

TAKEOFF RUNWAY 25: Climb on heading 263° to 5934, then left turn direct BRKEM at or below 10000, then on track 188° to cross LENNN at or above 10000, then on track 160° to TIKLR, then on track 144° to cross CIROS at or above 14000, then on track 175° to cross RKYMT at or above 16000, then on track 175° to cross SCAGS at or above FL180, thence

TAKEOFF RUNWAYS 34L/R, 35L/R: Climb on heading 353° to 5934, then on heading 353° or as assigned by ATC, expect vectors to cross SCAGS at or above FL180, thence

. . . . on track 189° to cross FRNKE at or above FL230, then on track 189° to SUDDZ. Maintain FL230. Expect higher filed altitude ten minutes after departure.

SW-1, 20 FEB 2025 to 20 MAR 2025

SW-1, 20 FEB 2025 to 20 MAR 2025