

TOMSN NINE ARRIVAL
(TOMSN, TOMSN9) 16MAY24

(TOMSN, TOMSN9) 24137
TOMSN NINE ARRIVAL

AL-9077 (FAA)

DENVER, COLORADO

DENVER APP CON
119.3 307.3
APA ATIS
120.3
BJC ATIS
126.25
CFO ATIS
119.025
DEN D-ATIS ARR
125.6 379.9
KBKF ATIS
119.675 259.3
FNL ATIS
135.075

HAYDEN
115.6 CHE
Chan 103

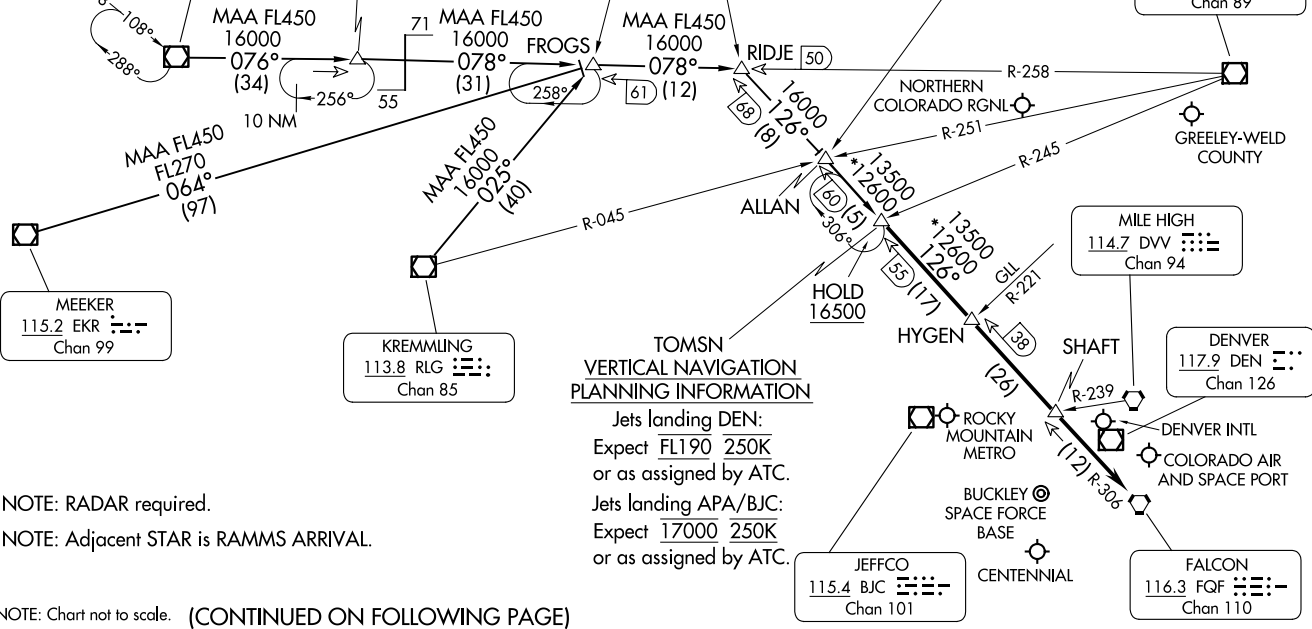
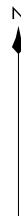
LARAMIE
117.6 LAR
Chan 123

CHEYENNE
113.1 CYS
Chan 78

GILL
114.2 GL
Chan 89

MILE HIGH
114.7 DVW
Chan 94

DENVER
117.9 DEN
Chan 126



**TOMSN
VERTICAL NAVIGATION
PLANNING INFORMATION**

Jets landing DEN:
Expect FL190 250K
or as assigned by ATC.
Jets landing APA/BJC:
Expect 17000 250K
or as assigned by ATC.

NOTE: RADAR required.

NOTE: Adjacent STAR is RAMMS ARRIVAL.

NOTE: Chart not to scale. (CONTINUED ON FOLLOWING PAGE)

DENVER, COLORADO

ARRIVAL ROUTE DESCRIPTION

HAYDEN TRANSITION (CHE.TOMSN9): From over CHE VOR/DME on CHE R-076 and GLL R-258 to RIDJE, then on FQF R-306 to TOMSN. Thence. . . .

KREMLING TRANSITION (RLG.TOMSN9): From over RLG VOR/DME on RLG R-025 and GLL R-258 to RIDJE, then on FQF R-306 to TOMSN. Thence. . . .

MEEKER TRANSITION (EKR.TOMSN9): From over EKR VOR/DME on EKR R-064 and GLL R-258 to RIDJE, then on FQF R-306 to TOMSN. Thence. . . .

. . . .from over TOMSN on FQF R-306 to FQF VORTAC. Expect RADAR vectors to the final approach course at or before FQF VORTAC.

SW-1, 20 FEB 2025 to 20 MAR 2025

SW-1, 20 FEB 2025 to 20 MAR 2025