

WAAS CH <b>97339</b> <b>W22A</b>	APP CRS <b>225°</b>	Rwy Idg <b>5002</b> TDZE <b>107</b> Apt Elev <b>112</b>
--	------------------------	---

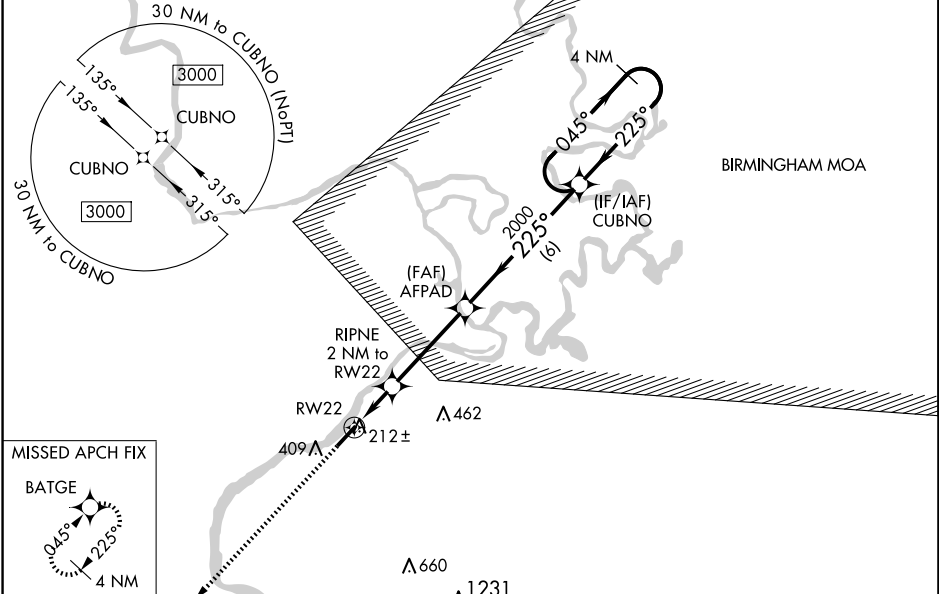
# RNAV (GPS) RWY 22

DEMOPOLIS RGNL (D YA)

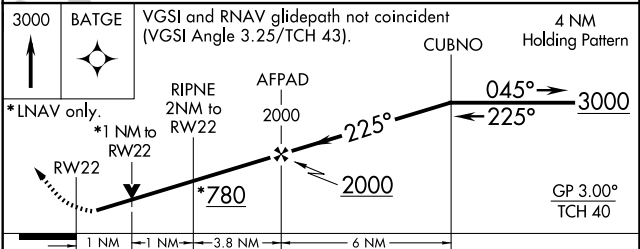
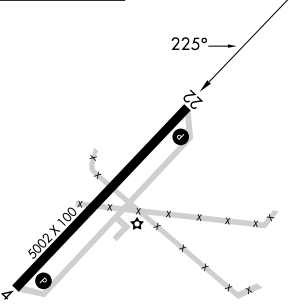
▼ For uncompensated Baro-VNAV systems, LNAV/VNAV NA below -15°C (5°F) or above 54°C (130°F). DME/DME RNP-0.3 NA. When local altimeter setting not received, use Marion altimeter setting and increase LPV and LNAV/VNAV DA 82 feet and all MDA 100 feet; increase LPV all Cats visibility ¼ mile, increase LNAV/VNAV all Cats and LNAV Cats C/D visibility ⅓ mile, increase Circling Cat C visibility ¼ mile, and Circling Cat D visibility ½ mile. Baro-VNAV and VDP NA when using Marion altimeter setting. Helicopter visibility reduction below ¼ SM NA.

MISSED APPROACH:  
Climb to 3000 direct  
BATGE and hold.

AWOS-3P <b>119.475</b>	MERIDIAN APP CON* <b>121.275 348.7</b>	UNICOM <b>122.8 (CTAF) 0</b>
---------------------------	---	---------------------------------



ELEV 112	TDZE 107
----------	----------



CATEGORY	A	B	C	D
LPV DA		369-7/8	262 (300-7/8)	
LNAV/VNAV DA		385-7/8	278 (300-7/8)	
LNAV MDA		480-1	373 (400-1)	
<b>C</b> CIRCLING	720-1	608 (700-1)	720-1 3/4 608 (700-1 3/4)	780-2 668 (700-2)

MIRL Rwy 4-22 0

SE-4, 20 FEB 2025 to 20 MAR 2025

SE-4, 20 FEB 2025 to 20 MAR 2025