

WAAS CH <b>60939</b> <b>W04A</b>	APP CRS <b>045°</b>	Rwy Idg <b>5002</b> TDZE <b>112</b> Apt Elev <b>112</b>
--	------------------------	---

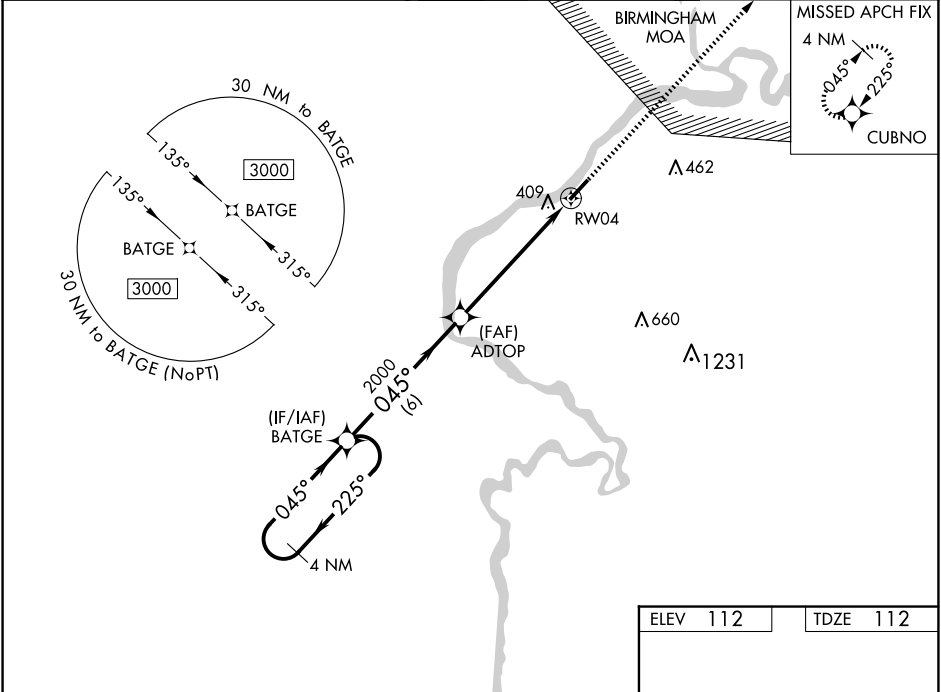
# RNAV (GPS) RWY 4

DEMOPOLIS RGNL (DYA)

**⚠** For uncompensated Baro-VNAV systems, LNAV/VNAV NA below -15°C (5°F) or above 54°C (130°F).  
**⚠** DME/DME RNP-0.3 NA. When local altimeter setting not received, use Marion altimeter setting and increase LPV and LNAV/VNAV DA 82 feet and all MDA 100 feet; increase LPV and LNAV/VNAV all Cats visibility 3/8 mile, increase LNAV Cats C/D and Circling Cat C visibility 1/4 mile, and increase Circling Cat D visibility 1/2 mile. Baro-VNAV and VDP NA when using Marion altimeter setting. Helicopter visibility reduction below 3/4 SM NA.

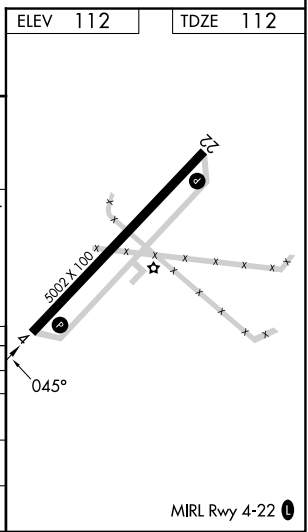
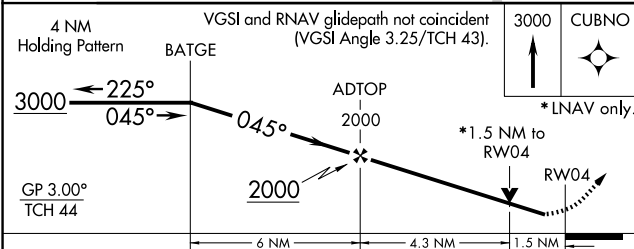
**MISSED APPROACH:**  
Climb to 3000 direct CUBNO and hold.

AWOS-3P <b>119.475</b>	MERIDIAN APP CON* <b>121.275 348.7</b>	UNICOM <b>122.8 (CTAF) 0</b>
---------------------------	---	---------------------------------



SE-4, 20 FEB 2025 to 20 MAR 2025

SE-4, 20 FEB 2025 to 20 MAR 2025



CATEGORY	A	B	C	D
LPV DA		362-3/4	250 (300-3/4)	
LNAV/VNAV DA		570-1 1/2	458 (500-1 1/2)	
LNAV MDA	660-1	548 (600-1)	660-1 1/2	548 (600-1 1/2)
<b>C</b> CIRCLING	720-1	608 (700-1)	720-1 3/4 608 (700-1 3/4)	780-2 668 (700-2)