

APP CRS
354°

Rwy Idg **4006**
TDZE **527**
Apt Elev **527**

RNAV (GPS) RWY 35
SALLISAW MUNI (JSV)

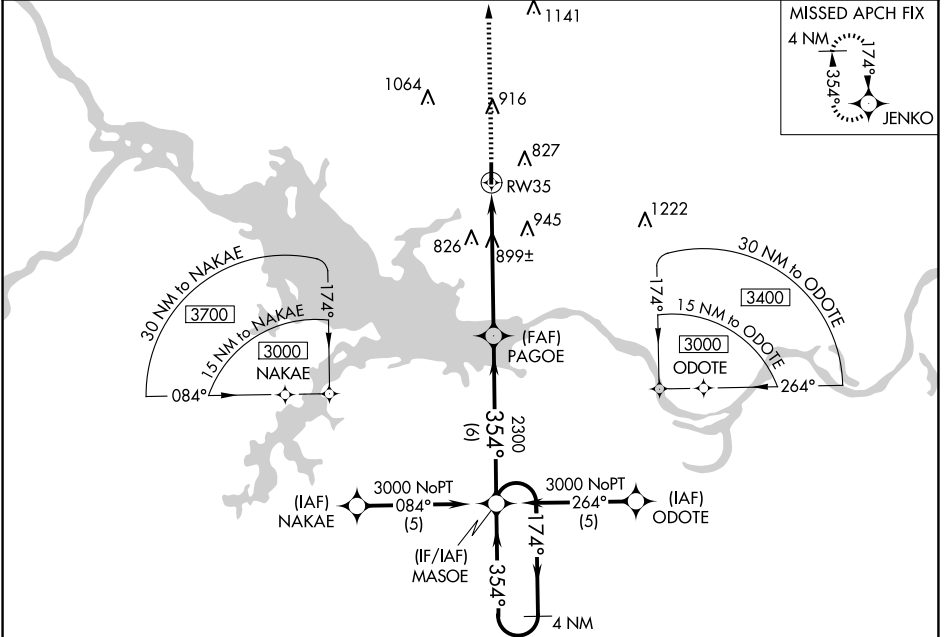
▽ DME/DME RNP-0.3 NA. Night landing: Rwy 17 NA.
▲ NA Helicopter visibility reduction below ¾ SM NA.

MISSED APPROACH: Climb to 3100
direct JENKO WP and hold.

AWOS-3
118.475

RAZORBACK APP CON *
120.9 343.75

UNICOM
122.7 (CTAF)



SC-1, 20 FEB 2025 to 20 MAR 2025

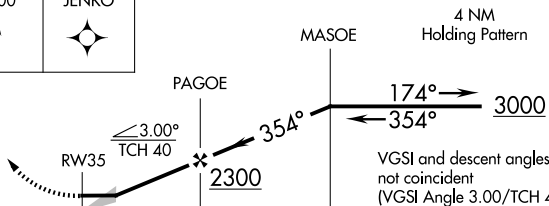
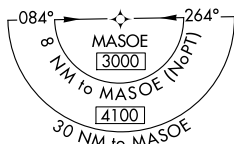
SC-1, 20 FEB 2025 to 20 MAR 2025

ELEV 527 TDZE 527

MIRL Rwy 17-35



354° to RW35



CATEGORY	A	B	C	D
LNAV MDA	1160-1 633 (700-1)		1160-1¾ 633 (700-1¾)	NA
CIRCLING	1160-1 633 (700-1)		1300-2¼ 773 (800-2¼)	NA