

WAAS CH 73001 W19A	APP CRS 183°	Rwy Idg TDZE 523 Apt Elev 523	3609
--	------------------------	---	-------------

RNAV (GPS) RWY 19

DECK (9D4)

RNP APCH.

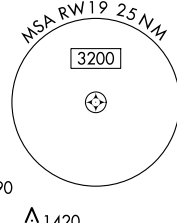
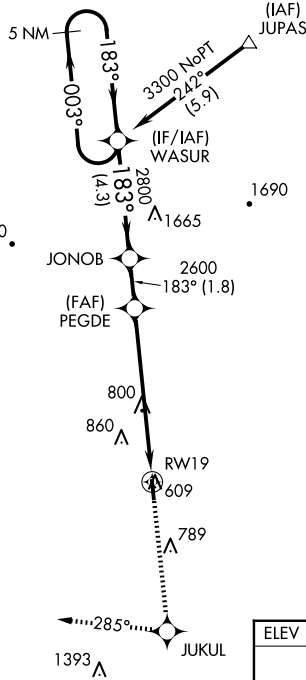
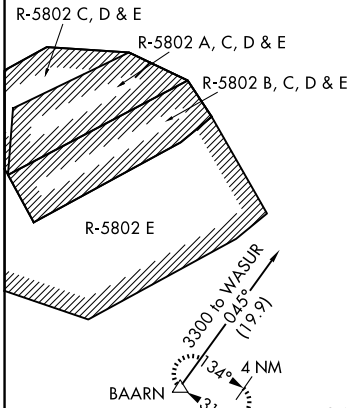
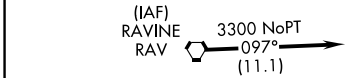
▼ When local altimeter setting not received, use Reading altimeter setting.

▲ Circling Rwy 1 NA at night.

MISSED APPROACH:
Climb to 4000 direct JUKUL and climbing right turn on track 285° to BAARN and hold.

AWOS-2 118.45	RDG ASOS 127.1	HARRISBURG APP CON 118.25 269.45	UNICOM 122.8 (CTAF) 0
-------------------------	--------------------------	--	---------------------------------

Procedure NA for arrivals at RAV VORTAC on airway radials 114 CW 131, arrivals at JUPAS on V499 northbound, and arrivals at BAARN on V12 westbound.



NE-4, 20 FEB 2025 to 20 MAR 2025

NE-4, 20 FEB 2025 to 20 MAR 2025

VGSI and RNAV glidepath not coincident (VGSI Angle 4.00/TCH 42).

5 NM Holding Pattern

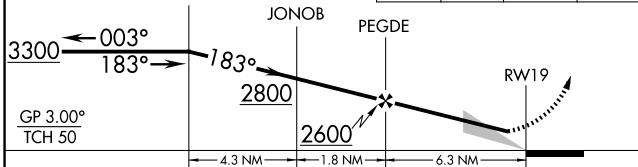
WASUR

JONOB

PEGDE

RWY 19

BAARN



CATEGORY	A	B	C	D
LPV DA	837-1 314 (400-1)			NA
LNAV MDA	1200-1	677 (700-1)	1200-2 677 (700-2)	NA
CIRCLING	1200-1 677 (700-1)	1240-1 717 (800-1)	1240-2 717 (800-2)	NA

